

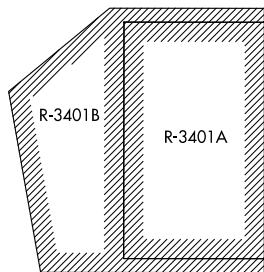
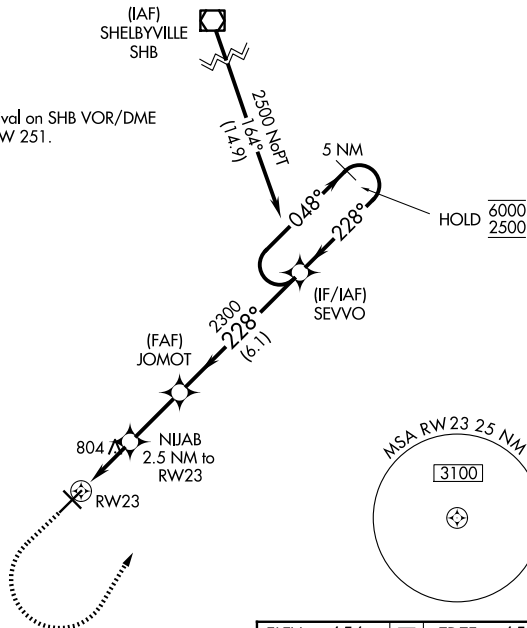
WAAS CH 90399 W23A	APP CRS 228°	Rwy Ldg TDZE 6401 Apt Elev 656
--	------------------------	--

RNAV (GPS) RWY 23

COLUMBUS MUNI (BAK)

RNP APCH - GPS.		MALSR	MISSED APPROACH: Climb to 1200, then climbing left turn to 2500 direct SEVVO and hold.	
For inop ALS, increase LNAV Cat C/D visibility to 1½ SM.				
AWOS-3 119.75	INDIANAPOLIS APP CON 134.85 317.8	COLUMBUS TOWER * 118.6 (CTAF) 0	GND CON 121.6	UNICOM 122.95

Procedure NA for arrival on SHB VOR/DME airway radials 124 CW 251.

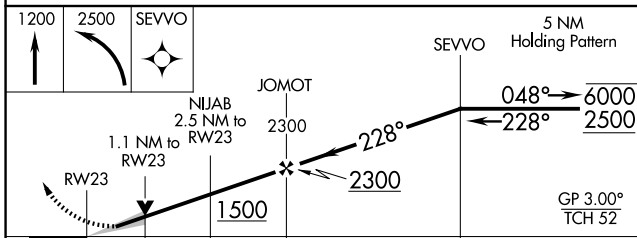


ELEV	656	D	TDZE	656
------	-----	---	------	-----

MIRL Rwy 14-32

HIRL Rwy 5-23

REIL Rws 5, 14, and 32



CATEGORY	A	B	C	D
LPV DA	906-½ 250 (300-½)			
LNAV MDA	1060-½ 404 (500-½)	1060-¾ 404 (500-¾)		

EC-2, 14 MAY 2026 to 11 JUN 2026

EC-2, 14 MAY 2026 to 11 JUN 2026