

PEORIA, ILLINOIS

HI-VOR Y or TACAN Y RWY 31

VORTAC PIA 115.2 Chan 99	APCH CRS 281°	Rwy Idg TDZE Arpt Elev 10,104 650 661
--	-------------------------	---

[USAF] GENERAL DOWNING - PEORIA INTL (KPJA)

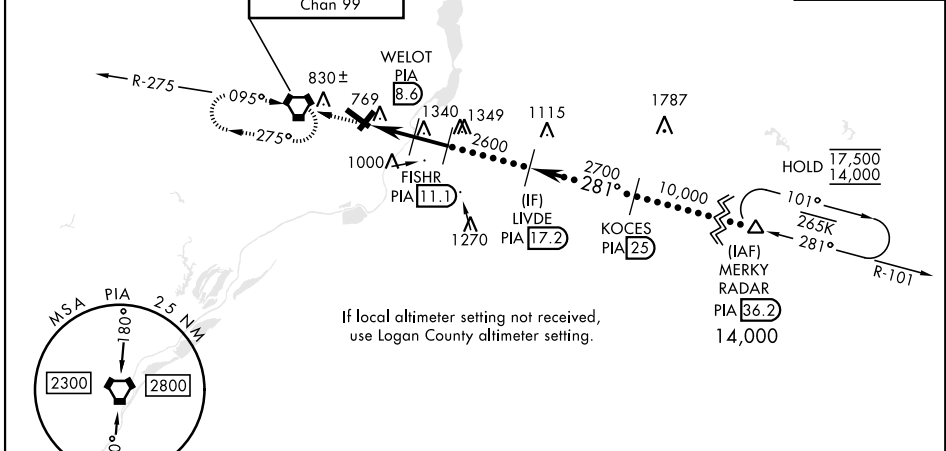
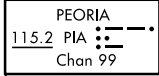
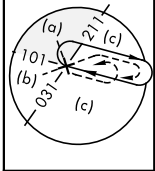
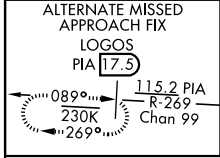
DME required. RADAR required for procedure entry.

*Straight-in Rwy 31, Circling Rwy 13-31 not authorized at night.

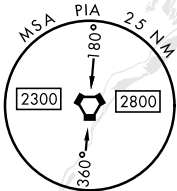


MISSED APPROACH: Climb to 2800, direct PIA VORTAC and hold. Continue climb-in-hold to 2800. (TACAN aircraft: continue on PIA R-269 to LOGOS/PIA 17.5 DME and hold west, right turn 089° inbound).

ATIS 126.1 282.2	SAINT LOUIS APP CON 125.8 269.2	PEORIA TOWER 124.0 353.85	GND CON 121.85 348.6
----------------------------	---	-------------------------------------	--------------------------------

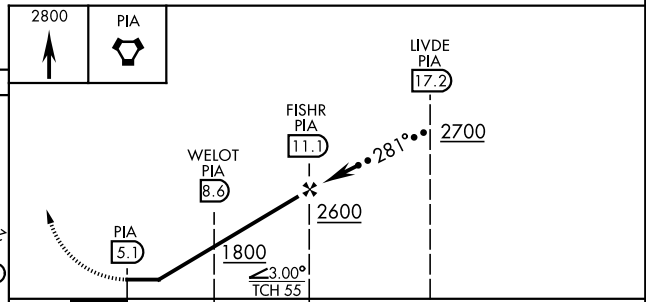
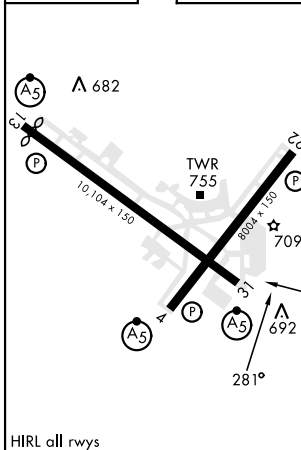
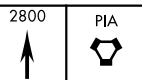


If local altimeter setting not received, use Logan County altimeter setting.



EMERG SAFE ALT 100 NM 3300

ELEV	661	TDZE	650
------	-----	------	-----



CATEGORY	C	D	E
S-31*	1040/60	390 (400-1½)	
CIRCLING*	1180-1½ 519 (600-1½)	1400-2¼ 739 (800-2¼)	1680-3 1019 (1100-3)
LOGAN COUNTY ALTIMETER MINIMA			
S-31*	1140-1¾	490 (500-1¾)	
CIRCLING*	1280-1¾ 619 (700-1¾)	1500-2¾ 839 (900-2¾)	1780-3 1119 (1200-3)

PEORIA, ILLINOIS

40°40'N-89°42'W

GENERAL DOWNING - PEORIA INTL (KPJA)

Amtd 2 31OCT24

HI-VOR Y or TACAN Y RWY 31

EC-3, 14 MAY 2026 to 11 JUN 2026

EC-3, 14 MAY 2026 to 11 JUN 2026