

LOM PI	APP CRS	Rwy Ldg	<b>10104</b>
<b>356</b>	<b>309°</b>	TDZE	<b>650</b>
		Apt Elev	<b>661</b>

# NDB RWY 31

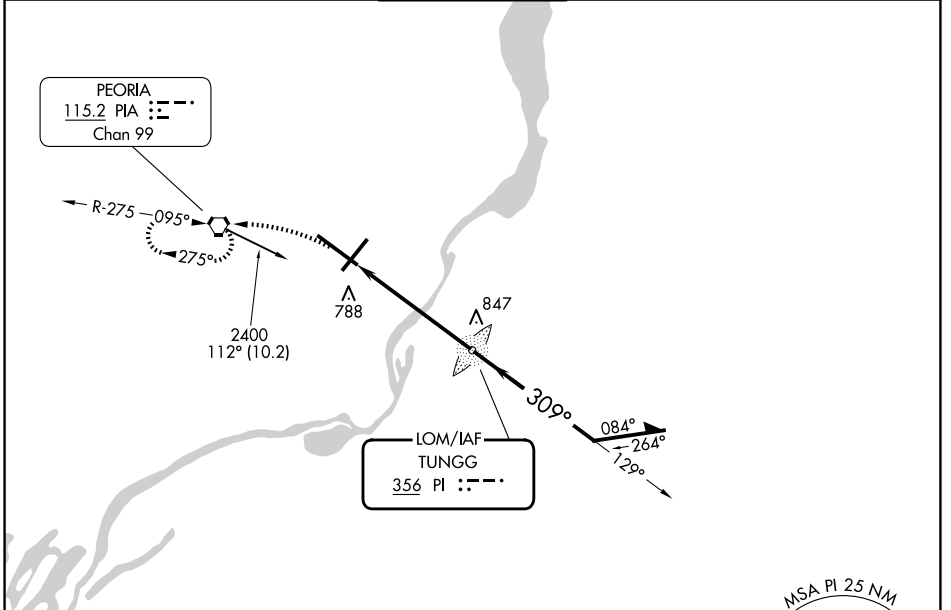
GENERAL DOWNING - PEORIA INTL (PIA)

▼ For inop ALS, increase S-31 Cat A/B visibility to RVR 5500, and Cat C/D to 1 3/8 SM. When local altimeter setting not received, use Logan County altimeter setting and increase all MDA 100 feet, increase S-31 Cat C and D visibility 1/4 mile, and Circling Cat C 1/4 mile and Cat D 1/2 mile. Circling Rwy 13, 31 NA at night.

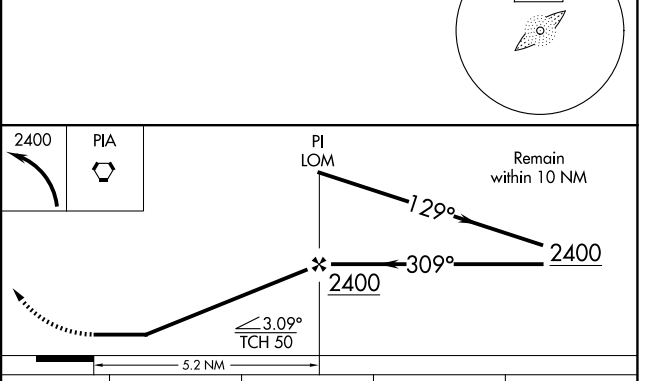
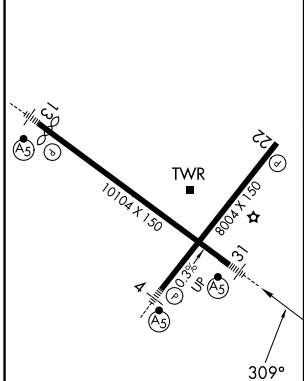


MISSED APPROACH: Climbing left turn 2400 direct PIA VORTAC and hold.

ATIS <b>126.1 282.2</b>	SAINT LOUIS APP CON <b>125.8 269.2</b>	PEORIA TOWER <b>124.0 353.85</b>	GND CON <b>121.85 348.6</b>	CLNC DEL <b>124.675 317.55</b>
----------------------------	---	-------------------------------------	--------------------------------	-----------------------------------



ELEV 661	<b>D</b>	TDZE 650
----------	----------	----------



HIRL Rwy 4-22 and 13-31						
FAF to MAP 5.2 NM						
Knots	60	90	120	150	180	
Min:Sec	5:12	3:28	2:36	2:05	1:44	
CATEGORY	A		B		C	D
S-31	1140/40 490 (500-3/4)		1140/50 490 (500-1)			
CIRCLING	1160-1 499 (500-1)		1180-1 1/2 519 (600-1 1/2)		1400-2 1/4 739 (800-2 1/4)	

# NDB RWY 31

EC-3, 14 MAY 2026 to 11 JUN 2026

EC-3, 14 MAY 2026 to 11 JUN 2026