

WAAS CH 60922 W13A	APP CRS 128°	Rwy Ldg TDZE 632 Apt Elev 661
--	------------------------	---

RNAV (GPS) RWY 13

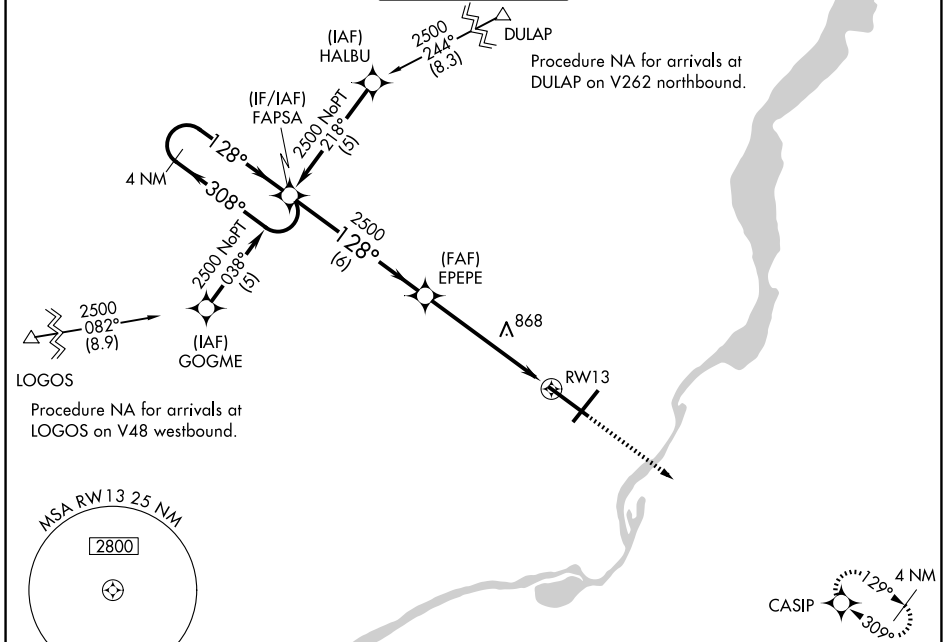
GENERAL DOWNING - PEORIA INTL (PIA)

RNP APCH - GPS.

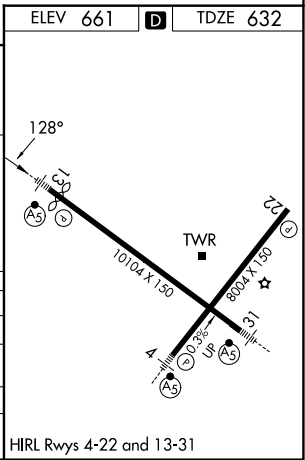
For uncompensated Baro-VNAV systems, LNAV/VNAV NA below -19°C or above 54°C. When local altimeter setting not received, use Lincoln altimeter setting increase LPV DA to 1110 feet and all visibilities ¼ SM. Increase LNAV/VNAV DA to 1168 feet and all visibilities ½ SM. Increase all MDAs 100 feet and LNAV visibility Cat C/D ¼ SM, and Circling visibility Cat C/D ½ SM. Baro-VNAV and VDP NA when using Lincoln altimeter setting. For inop ALS, increase LPV all Cats visibility to 1 ½ SM, LNAV Cat A/B visibility to 1 SM and Cat C/D visibility to 1 ½ SM. For inop ALS when using Lincoln altimeter setting, increase LPV visibility all Cats to 1 ½ SM and LNAV Cat A/B visibility to 1 SM.

MALSR MISSED APPROACH: Climb to 2400 direct CASIP and hold.

ATIS 126.1 282.2	SAINT LOUIS APP CON 125.8 269.2	PEORIA TOWER 124.0 353.85	GND CON 121.85 348.6	CLNC DEL 124.675 317.55
----------------------------	---	-------------------------------------	--------------------------------	-----------------------------------



4 NM Holding Pattern		VGS1 and RNAV glidepath not coincident (VGS1 Angle 3.00/TCH 57).		2400	CASIP
2500 ← 308°		→ 128°		↑	✧
GP 3.00° TCH 59		2500			
6 NM		4.3 NM		1.3 NM to RWY 13	
CATEGORY	A	B	C	D	
LPV DA		1025-¾	389 (400-¾)		
LNAV/VNAV DA		1083-1	447 (500-1)		
LNAV MDA	1120-½	484 (500-½)	1120-1	484 (500-1)	
CIRCLING	1160-1	499 (500-1)	1180-1½	1400-2¼	
			519 (600-1½)	739 (800-2¼)	



EC-3, 14 MAY 2026 to 11 JUN 2026

EC-3, 14 MAY 2026 to 11 JUN 2026