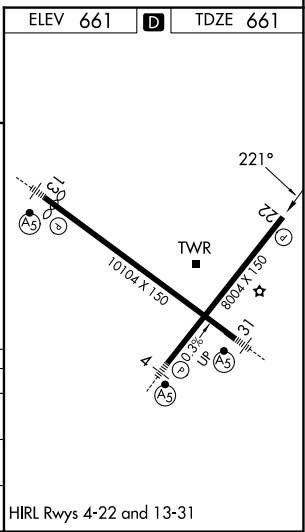
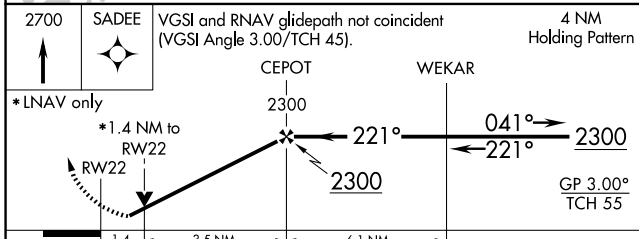
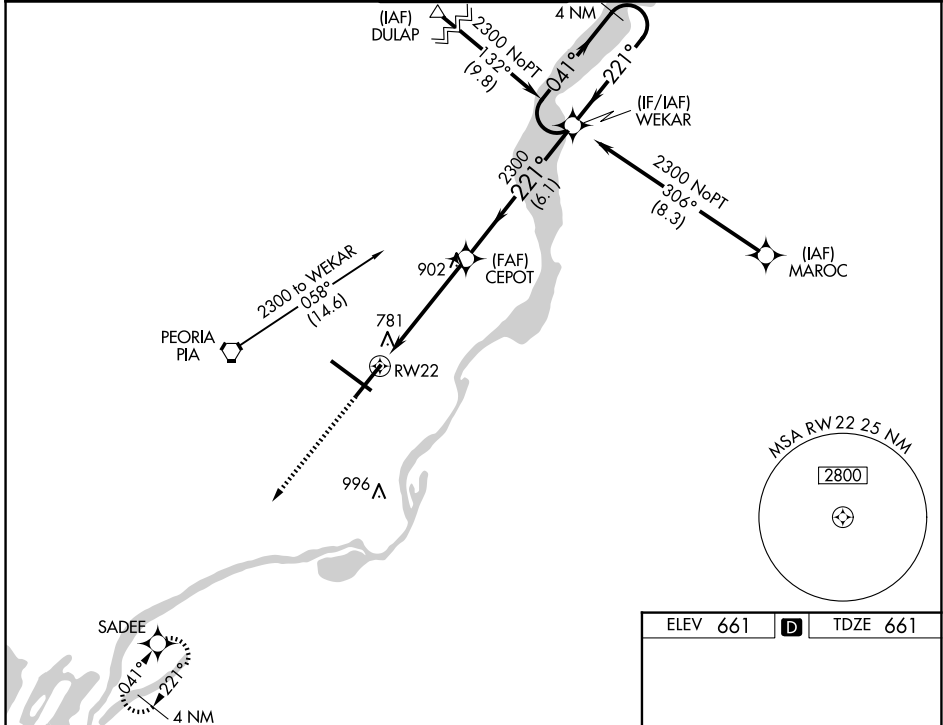


APP CRS 221°	Rwy Ldg 8004
	TDZE 661
	Apt Elev 661

RNAV (GPS) RWY 22

GENERAL DOWNING - PEORIA INTL (PIA)

RNP APCH		<p>⚠ For uncompensated Baro-VNAV systems, LNAV/VNAV NA below -19°C or above 54°C. When local altimeter setting not received, use Logan County altimeter setting and increase all DA 89 feet and all MDA 100 feet, increase LNAV/VNAV DA all Cats visibility to 1½ mile, LNAV MDA Cat C and D visibility to ¾ mile, and Circling Cat C ¼ mile and Cat D ½ mile. Baro-VNAV and VDP NA when using Logan County altimeter setting. Rwy 22 helicopter visibility reduction below ¾ SM NA. Circling Rwy 13, 31 NA at night.</p>		<p>MISSED APPROACH: Climb to 2700 direct SADEE and hold.</p>	
ATIS 126.1 282.2	SAINT LOUIS APP CON 125.8 269.2	PEORIA TOWER 124.0 353.85	GND CON 121.85 348.6	CLNC DEL 124.675 317.55	



CATEGORY	A	B	C	D
LNAV/VNAV DA	1093-1⅜		432 (500-1⅜)	
LNAV MDA	1160-1 499 (500-1)		1160-1⅜ 499 (500-1⅜)	
CIRCLING	1160-1 499 (500-1)		1180-1½ 519 (600-1½)	1400-2¼ 739 (800-2¼)

EC-3, 14 MAY 2026 to 11 JUN 2026

EC-3, 14 MAY 2026 to 11 JUN 2026