

WAAS CH <b>77509</b> <b>W31A</b>	APP CRS <b>309°</b>	Rwy Ldg <b>10104</b> TDZE <b>650</b> Apt Elev <b>661</b>
--	------------------------	--

# RNAV (GPS) RWY 31

GENERAL DOWNING - PEORIA INTL (PIA)

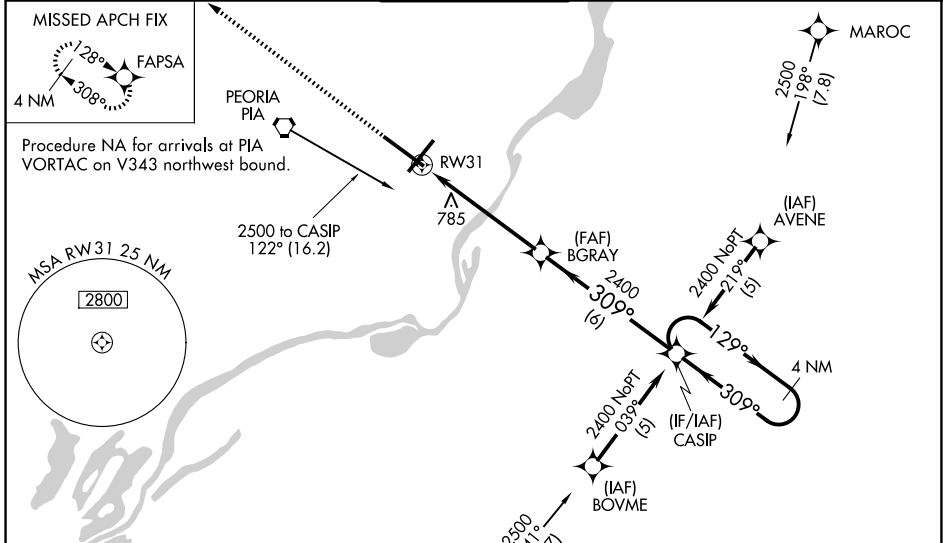
**RNP APCH - GPS**

▼ For uncompensated Baro-VNAV systems, LNAV/VNAV NA below -20°C or above 54°C.  
 ▲ When local altimeter setting not received, use Lincoln altimeter setting and increase LPV DA to 1028 feet and all visibilities to RVR 3500; increase LNAV/VNAV DA to 1211 feet and all visibilities to 1 ¼ SM; increase all MDAs 100 feet and LNAV visibility Cat C/D to 1 ¼ SM, and Circling visibility Cat C/D ½ SM. Baro-VNAV and VDP NA when using Lincoln altimeter setting. For inop ALS, increase LPV all Cats visibility to RVR 4500, LNAV/VNAV all Cats visibility to 1 ¾ SM, and LNAV visibility Cat C/D to 1 ¾ SM. For inop ALS when using Lincoln altimeter setting, increase LPV all Cats visibility to RVR 5500, LNAV/VNAV all Cats visibility to 1 ¾ SM, and LNAV visibility Cat C/D to 1 ¾ SM.

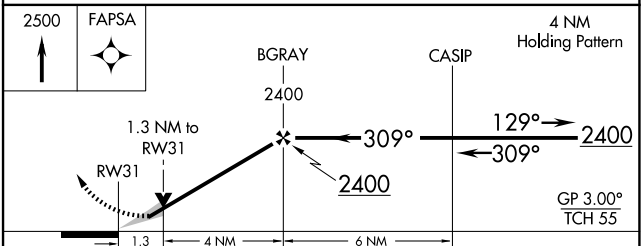
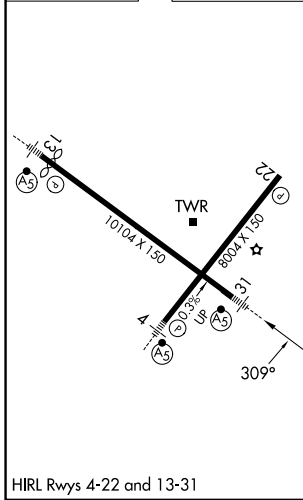
MALSRL

MISSED APPROACH:  
Climb to 2500 direct FAPSA and hold.

ATIS <b>126.1 282.2</b>	SAINT LOUIS APP CON <b>125.8 269.2</b>	PEORIA TOWER <b>124.0 353.85</b>	GND CON <b>121.85 348.6</b>	CLNC DEL <b>124.675 317.55</b>
----------------------------	---	-------------------------------------	--------------------------------	-----------------------------------



ELEV 661	<b>D</b>	TDZE 650
----------	----------	----------



CATEGORY	A	B	C	D
LPV DA		939/24	289 (300-½)	
LNAV/VNAV DA		1122/60	472 (500-1¼)	
LNAV MDA	1120/24	470 (500-½)	1120/50	470 (500-1)
CIRCLING	1160-1	499 (500-1)	1180-1½ 519 (600-1½)	1400-2¼ 739 (800-2¼)

EC-3, 14 MAY 2026 to 11 JUN 2026

EC-3, 14 MAY 2026 to 11 JUN 2026