

MILTON, FLORIDA

TACAN RWY 23

TACAN NSE Chan 70	APCH CRS 211°	Rwy Idg TDZE Arpt Elev 6003 183 199
-----------------------------	-------------------------	---

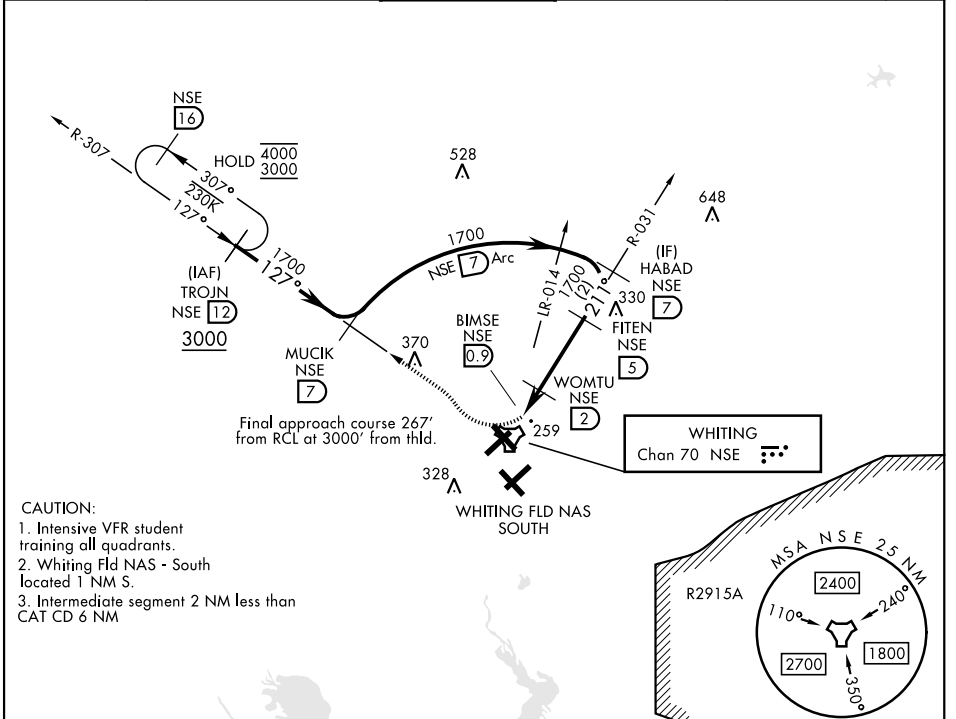
[USN]

WHITING FLD NAS - NORTH (KNSE)

▼ *Circling not authorized S of Rwy 5 and 32.
When circling to Rwy 32 at night, operational VGSI required, remain on or above VGSI GP until thld.

MISSED APPROACH: Climb to 600. Then climbing right turn to 3000. Intercept NSE TACAN R-307 to TROJN and hold. Continue climb in hold. Contact Pensacola APP CON.

ATIS ★ 290.325	PENSACOLA APP CON 127.35 278.8	NORTH WHITING TOWER ★ 121.4 306.925	GND CON 251.15	CLNC DEL 257.775	ASR
--------------------------	--	--	--------------------------	----------------------------	-----



SE-3, 14 MAY 2026 to 11 JUN 2026

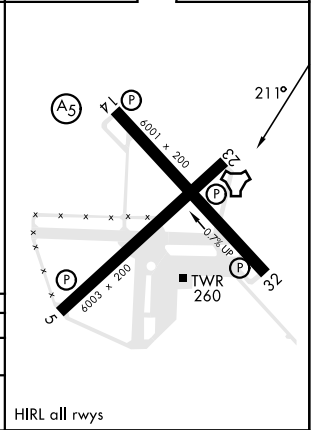
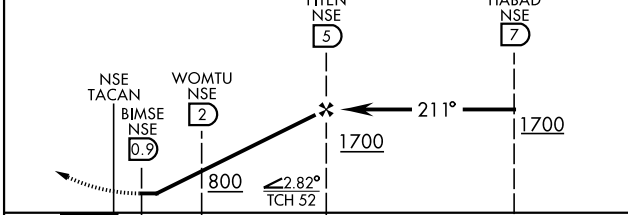
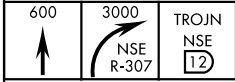
SE-3, 14 MAY 2026 to 11 JUN 2026

CAUTION:

- Intensive VFR student training all quadrants.
- Whiting Fld NAS - South located 1 NM S.
- Intermediate segment 2 NM less than CAT CD 6 NM

EMERG SAFE ALT 100 NM 3500

ELEV	199	TDZE	183
------	-----	------	-----



CATEGORY	A	B	C	D
S-23		540-1	357	(400-1)
CIRCLING*	600-1 401 (500-1)	660-1 461 (500-1)	660-1½ 461 (500-1½)	760-2 561 (600-2)

HIRL all rwys

MILTON, FLORIDA
Amdt 6 12JUN25

30° 43' N-87° 01' W

WHITING FLD NAS - NORTH (KNSE)

TACAN RWY 23