

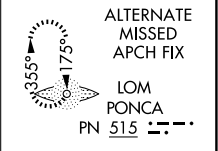
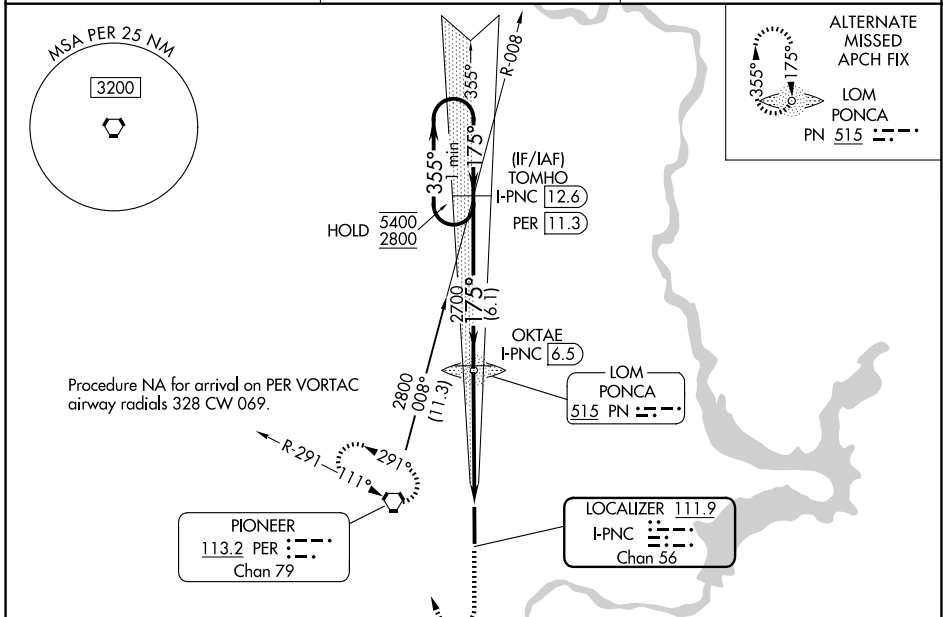
LOC/DME I-PNC 111.9 Chan 56	APP CRS 175°	Rwy Ldg TDZE Apt Elev 7201 1004 1009
---	------------------------	--

ILS or LOC RWY 17

PONCA CITY RGNL (PNC)

DME required.	MALSR	MISSED APPROACH: Climb to 2700 then right turn direct PER VORTAC and hold.
<p>▼ For inop ALS, increase S-LOC 17 visibility Cat C/D to 1 1/2 SM.</p> <p>▲ NA Autopilot coupled approach NA below 1570.</p>		

ASOS 134.075	KANSAS CITY CENTER 127.8 319.1	UNICOM 123.0 (CTAF) 0
------------------------	--	---------------------------------



One Minute Holding Pattern	VGSI and ILS glidepath not coincident (VGSI Angle 3.00/TCH 52).		2700	PER
<p>5400 ← 355°</p> <p>2800 → 175°</p> <p>GS 3.00° TCH 48</p>	<p>TOMHO I-PNC 12.6 PER 11.3</p> <p>OKTAE I-PNC 6.5</p>	<p>2700</p> <p>I-PNC 2.9 I-PNC 1.4</p>		
	6.1 NM	3.6 NM	1.5 NM	
CATEGORY	A	B	C	D
S-ILS 17	1204-1/2		200 (200-1/2)	
S-LOC 17	1520-1/2	516 (600-1/2)	1520-1	516 (600-1)
CIRCLING	1520-1 511 (600-1)	1580-1 571 (600-1)	1800-2 1/4 791 (800-2 1/4)	1880-2 3/4 871 (900-2 3/4)

HIRL Rwy 17-35 0

SC-1, 14 MAY 2026 to 11 JUN 2026

SC-1, 14 MAY 2026 to 11 JUN 2026