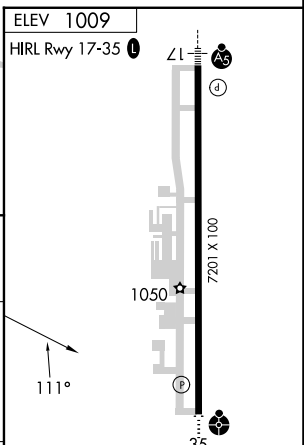
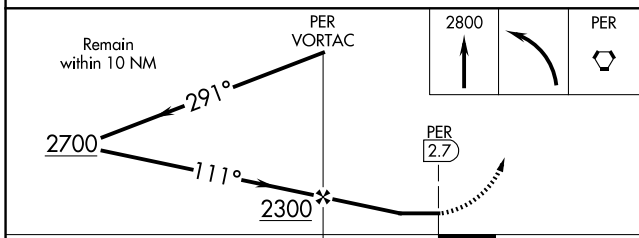
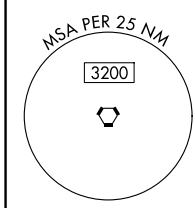
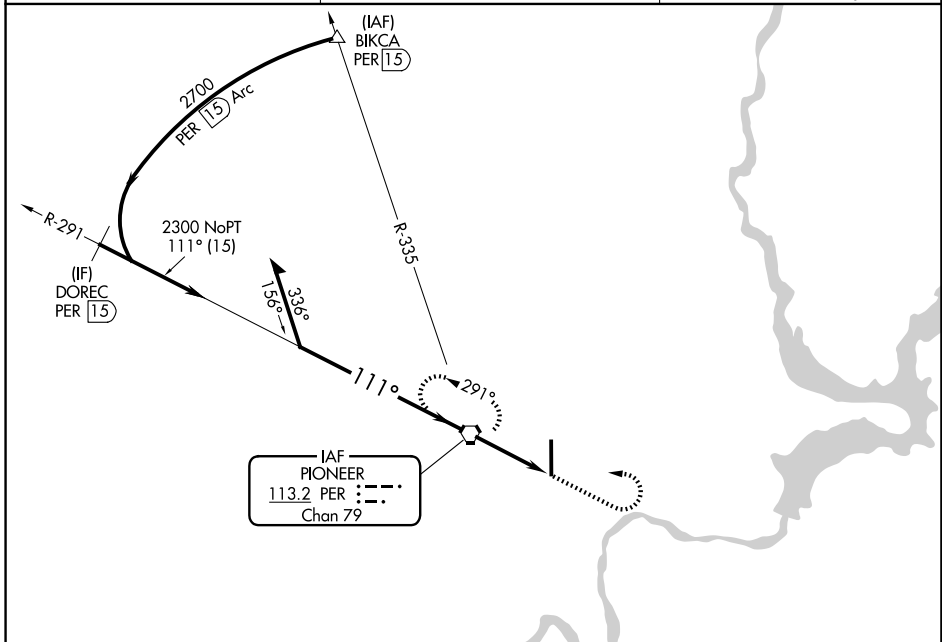


VORTAC PER <b>113.2</b> Chan <b>79</b>	APP CRS <b>111°</b>	Rwy Ldg TDZE Apt Elev <b>1009</b>	<b>N/A</b> <b>N/A</b>
--	------------------------	--	--------------------------

**VOR-A**  
PONCA CITY RGNL (PNC)

**MISSED APPROACH:** Climb to 2800 then left turn direct PER VORTAC and hold.

ASOS <b>134.075</b>	KANSAS CITY CENTER <b>127.8 319.1</b>	UNICOM <b>123.0 (CTAF) 0</b>
------------------------	--	---------------------------------



CATEGORY	FAF to MAP 2.7 NM			
	A	B	C	D
CIRCLING	1520-1 511 (600-1)	1580-1 571 (600-1)	1800-2¼ 791 (800-2¼)	1880-2¾ 871 (900-2¾)
	Knots 60	90	120	150 180
	Min:Seq 2:54	1:56	1:27	1:10 0:58

SC-1, 14 MAY 2026 to 11 JUN 2026

SC-1, 14 MAY 2026 to 11 JUN 2026