

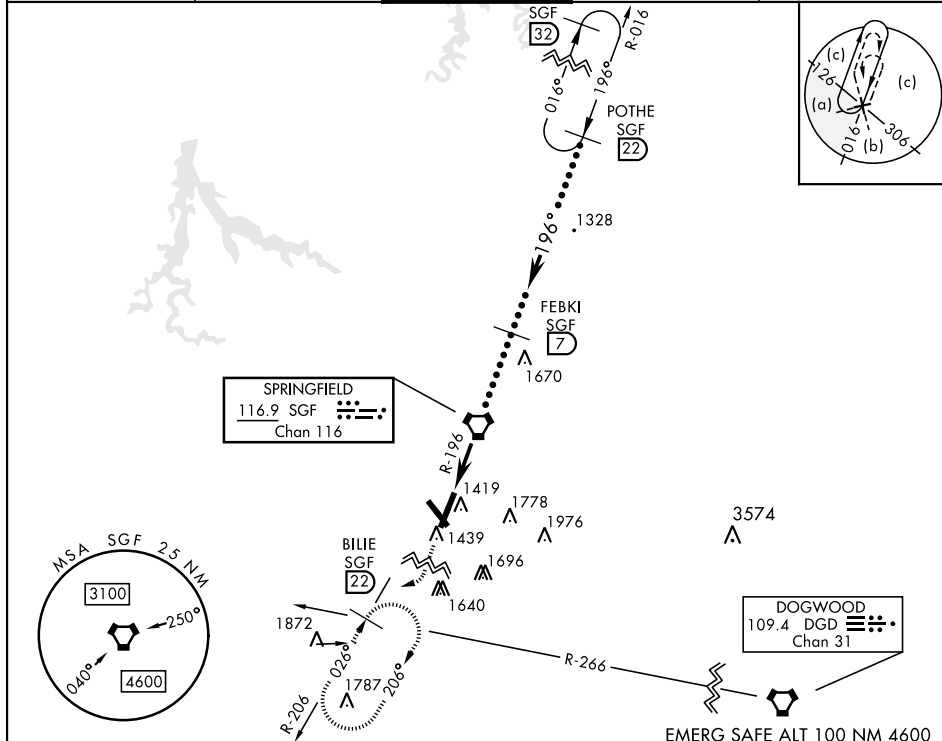
SPRINGFIELD, MISSOURI

HI-TACAN RWY 20

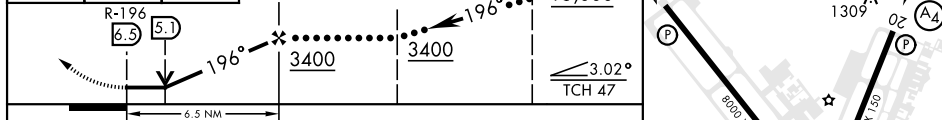
VORTAC SGF 116.9 Chan 116	APCH CRS 196°	Rwy Idg 7003 TDZE 1262 Arpt Elev 1268	AL-604 [USAF]	SPRINGFIELD-BRANSON NATL (KSGF)
---	-------------------------	--	---------------	---------------------------------

<p>When local altimeter setting not received, use Monett altimeter setting.</p>	<p>MALS</p>	<p>MISSED APPROACH: Climb to 3000 then right turn via SGF VORTAC R-206 to BILLIE INT/SGF 22 DME and hold.</p>
---	-------------	---

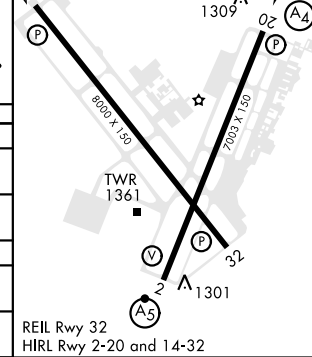
ATIS 135.125	APP CON 121.1 290.5	TOWER 119.9 257.8	GND CON 121.9 251.15	CLNC DEL 123.675
------------------------	-------------------------------	-----------------------------	--------------------------------	----------------------------



3000		BILLIE SGF 22	VDP NA when using Monett altimeter setting.	FEBKI 7	POTHE 22	15,000	ELEV 1268	TDZE 1262
------	--	---------------	---	---------	----------	--------	-----------	-----------



CATEGORY	C	D	E
S-20	1760-1¼ 498 (500-1¼)	1760-1½ 498 (500-1½)	1760-1¾ 498 (500-1¾)
CIRCLING	1820-1½ 552 (600-1½)	1820-2 552 (600-2)	1920-2¼ 652 (700-2¼)
MONETT ALTIMETER SETTING MINIMUMS			
S-20	1860-1½ 598 (600-1½)	1860-1¾ 598 (600-1¾)	1860-2 598 (600-2)
CIRCLING	1920-1¾ 652 (700-1¾)	1920-2¾ 652 (700-2¾)	2020-2¾ 752 (800-2¾)



SPRINGFIELD, MISSOURI 37°15'N-93°23'W SPRINGFIELD-BRANSON NATL (KSGF)

HI-TACAN RWY 20

NC-3, 14 MAY 2026 to 11 JUN 2026

NC-3, 14 MAY 2026 to 11 JUN 2026