

LOC/DME I-GWA <b>109.7</b> Chan <b>34</b>	APP CRS <b>139°</b>	Rwy Ldg TDZE Apt Elev	<b>8000</b> <b>1260</b> <b>1268</b>
---	------------------------	-----------------------------	---

# ILS or LOC RWY 14

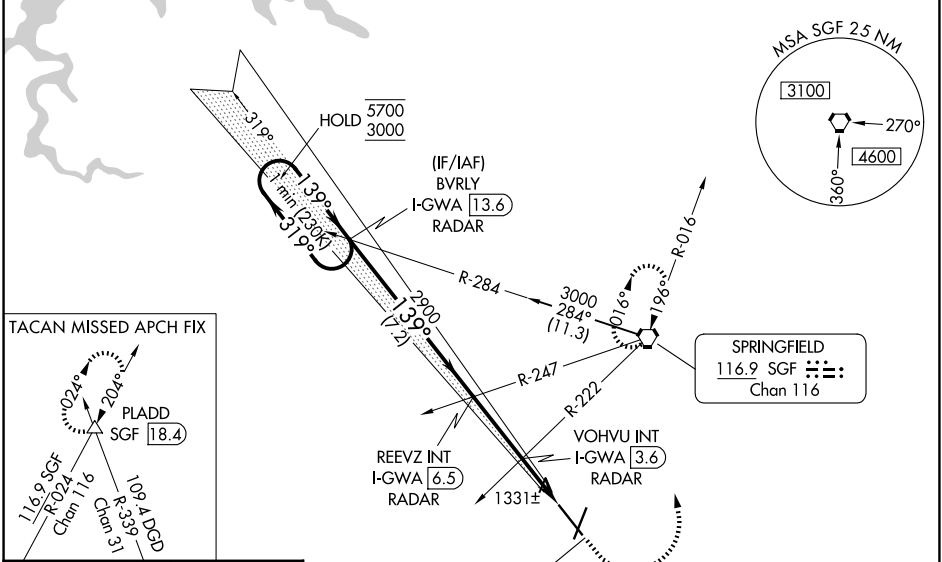
SPRINGFIELD-BRANSON NTL (SGF)

**VDP NA** when using HFJ altimeter setting. When local altimeter setting not received, use HFJ altimeter setting and increase S-ILS 14 DA to 1550 feet; increase all MDAs 100 feet and S-LOC 14 visibility Cat C/D/E to RVR 4000 and Circling visibility Cat C/D 1/2 SM. For inop ALS, increase S-ILS 14 Cat E visibility to RVR 4000, and increase S-LOC 14 Cat C/D/E visibility to 2 SM. \*RVR 1800 authorized with use of FD or AP or HUD to DA (NA when using HFJ altimeter setting).

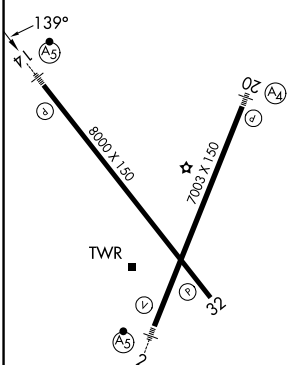
**MISSED APPROACH:** Climb to 1800 then climbing left turn to 3000 direct SGF VORTAC and hold, continue climb in hold to 3000. (TACAN aircraft continue on SGF VORTAC R-024 to PLADD INT and hold northeast, right turn, 204° inbound).



ATIS <b>135.125</b>	SPRINGFIELD APP CON <b>124.95 290.5</b>	SPRINGFIELD TOWER <b>119.9 257.8</b>	GND CON <b>121.9 251.15</b>
------------------------	--	---	--------------------------------



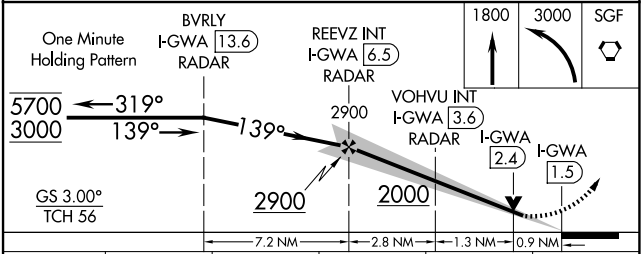
ELEV 1268	<b>D</b>	TDZE 1260
-----------	----------	-----------



REIL Rwy 32  
HIRL Rws 2-20 and 14-32

FAF to MAP 5 NM

Knots	60	90	120	150	180
Min:Sec	5:00	3:20	2:30	2:00	1:40



CATEGORY	A	B	C	D	E
S-ILS 14*	1460/24		200 (200-1/2)		
S-LOC 14	1600/24	340 (400-1/2)	1600/26		340 (400-1/2)
CIRCLING	1760-1 492 (500-1)	1820-1 552 (600-1)	1820-1 1/2 552 (600-1 1/2)	1920-2 652 (700-2)	2080-3 812 (900-3)

NC-3, 14 MAY 2026 to 11 JUN 2026

NC-3, 14 MAY 2026 to 11 JUN 2026