


| | | | |
|--|------------------------|-----------------------------|---|
| WAAS CH 40121 W14A | APP CRS 139° | Rwy Ldg TDZE Apt Elev | 8000 1260 1268 |
|--|------------------------|-----------------------------|---|

RNAV (GPS) RWY 14

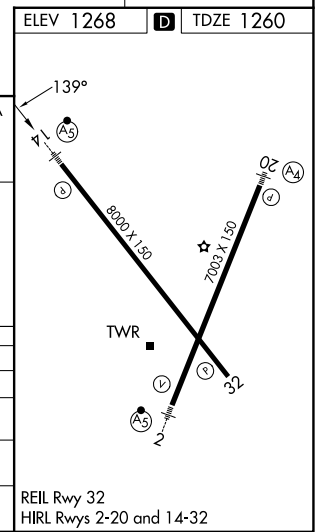
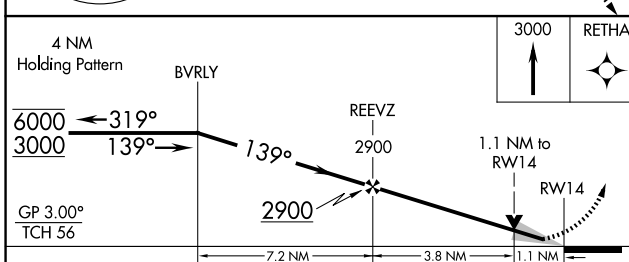
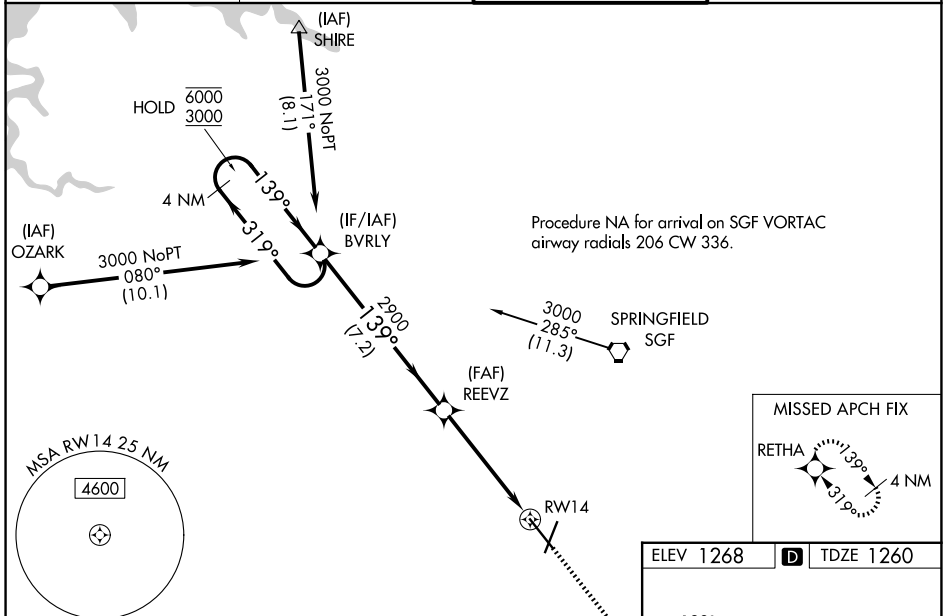
SPRINGFIELD-BRANSON NTL (SGF)

RNP APCH - GPS.

⚠ For uncompensated Baro-VNAV systems, LNAV/VNAV NA below -16°C or above 54°C.
 ⚠ Baro-VNAV and VDP NA when using HFJ altimeter setting. When local altimeter setting not received, use HFJ altimeter setting and increase LPV DA to 1550 feet; increase LNAV/VNAV DA to 1646 feet and all visibilities to RVR 3500. Increase all MDAs 100 feet and LNAV visibility Cat C/D to RVR 5500 and Circling visibility Cat C/D ½ SM. For inop ALS, increase LNAV/VNAV all Cats visibility to RVR 4500 and LNAV Cat C/D to RVR 6000.
 *RVR 1800 authorized with use of FD or AP or HUD to DA (NA when using HFJ altimeter setting).

MALS R  MISSED APPROACH: Climb to 3000 direct RETHA and hold.

| | | | |
|------------------------|--|---|--------------------------------|
| ATIS 135.125 | SPRINGFIELD APP CON 124.95 290.5 | SPRINGFIELD TOWER 119.9 257.8 | GND CON 121.9 251.15 |
|------------------------|--|---|--------------------------------|



| CATEGORY | A | B | C | D |
|--------------|-----------------------|-----------------------|------------------------|-----------------------|
| LPV DA* | | 1460-24 | 200 (200-½) | |
| LNAV/VNAV DA | | 1556-24 | 296 (300-½) | |
| LNAV MDA | 1680-24 | 420 (500-½) | 1680-40 | 420 (500-¾) |
| CIRCLING | 1760-1 492 (500-1) | 1820-1 552 (600-1) | 1820-1½ 552 (600-½) | 1920-2 652 (700-2) |

NC-3, 14 MAY 2026 to 11 JUN 2026

NC-3, 14 MAY 2026 to 11 JUN 2026