


WAAS CH 86214 W02A	APP CRS 019°	Rwy Ldg TDZE Apt Elev	7003 1265 1268
--	------------------------	-----------------------------	---

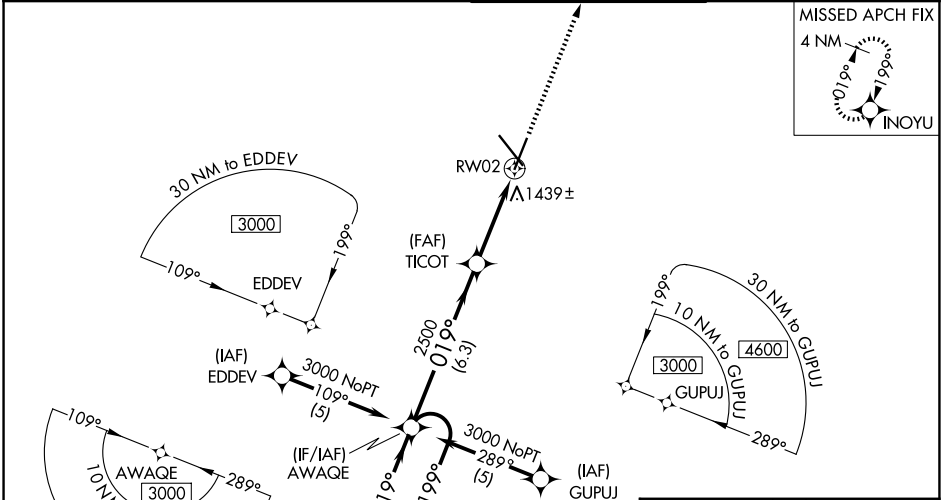
RNAV (GPS) RWY 2

SPRINGFIELD-BRANSON NTL (SGF)

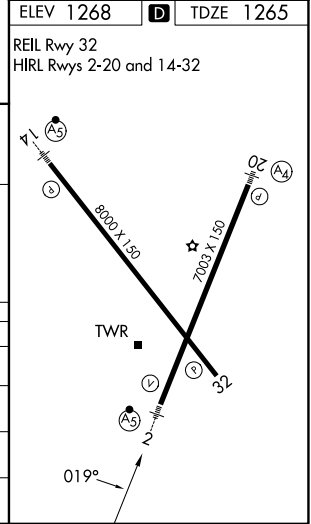
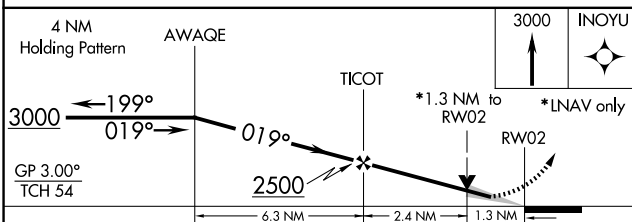
⚠ DME/DME RNP -0.3 NA. For uncompensated Baro-VNAV systems, LNAV/VNAV NA below -17°C (2°F) or above 45°C (113°F).
 Baro-VNAV and VDP NA when using Monett altimeter setting.
 For inoperative MALSRS, increase LNAV Cat A and B visibility to RVR 5000.
 When local altimeter setting not received, use Monett altimeter setting and increase all DAs 90 feet and all MDAs 100 feet, increase LPV visibility all Cats to RVR 5000, LNAV/VNAV visibility all Cats to 1½ miles, LNAV visibility Cat C to RVR 5000 and Cat D to RVR 6000, and increase visibility Circling Cat C to 1¾ miles, and Cat D to 2 miles.
 For inoperative MALSRS, when using Monett altimeter setting, increase LPV visibility all Cats to 1½, LNAV Cat A and B visibility to RVR 5000.

MALSRS

 MISSED APPROACH: Climb to 3000 direct INOYU and hold.

ATIS 135.125	SPRINGFIELD APP CON 124.95 290.5	SPRINGFIELD TOWER 119.9 257.8	GND CON 121.9 251.15
------------------------	--	---	--------------------------------



ELEV 1268	D TDZE 1265
REIL Rwy 32	HIRL Rwy 2-20 and 14-32



CATEGORY	A	B	C	D
LPV DA		1590/40	325 (400-¾)	
LNAV/ VNAV DA		1754/60	489 (500-1¼)	
LNAV MDA		1720/40	455 (500-¾)	1720/50 455 (500-1)
CIRCLING	1760-1 492 (500-1)	1820-1 552 (600-1)	1820-1½ 552 (600-1½)	1920-2 652 (700-2)

NC-3, 14 MAY 2026 to 11 JUN 2026

NC-3, 14 MAY 2026 to 11 JUN 2026