

WAAS CH <b>65613</b> <b>W20A</b>	APP CRS <b>199°</b>	Rwy Ldg TDZE Apt Elev	<b>7003</b> <b>1262</b> <b>1268</b>
--	------------------------	-----------------------------	---

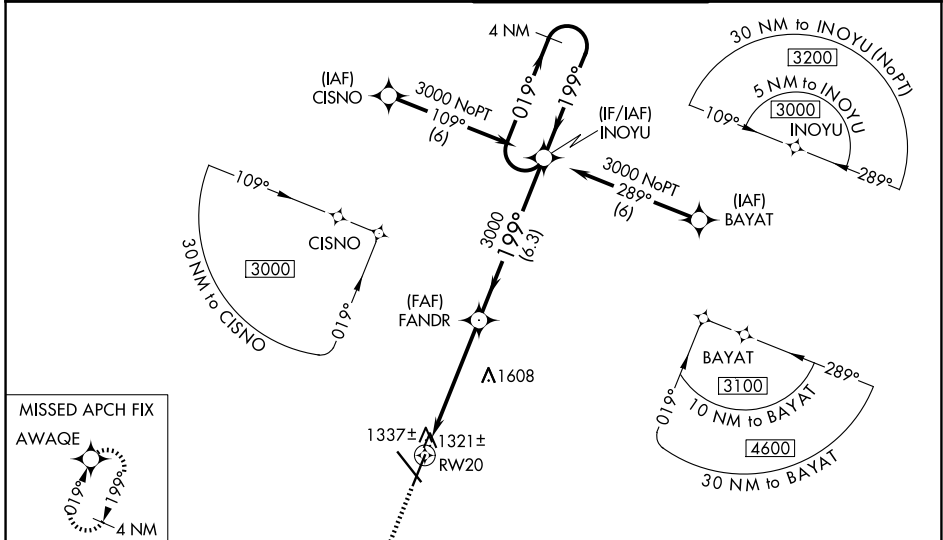
# RNAV (GPS) RWY 20

SPRINGFIELD-BRANSON NTL (SGT')

**▼** DME/DME RNP-0.3 NA. Visibility reduction by helicopters NA.  
**▲** For uncompensated Baro-VNAV systems, LNAV/VNAV NA below -17°C (2°F) or above 46°C (114°F).  
 Baro-VNAV and VDP NA when using Monett altimeter setting.  
 Inoperative table does not apply to LNAV/VNAV all Cats and LNAV Cat C.  
 When local altimeter setting not received, use Monett altimeter setting and increase all DAs 90 feet and increase all MDAs 100 feet, increase LPV visibility all Cats ¼ mile, increase LNAV/VNAV all Cats ¼ mile, increase LNAV Cats C and D ½ mile, increase Circling Cat C ¼ mile.

MALS  
 (A) = MISSED APPROACH: Climb to 3000 direct AWAKE and hold.

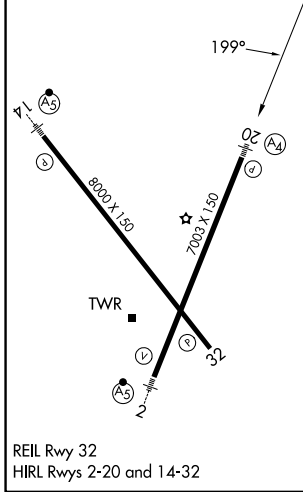
ATIS <b>135.125</b>	SPRINGFIELD APP CON <b>124.95 290.5</b>	SPRINGFIELD TOWER <b>119.9 257.8</b>	GND CON <b>121.9 251.15</b>
------------------------	--	---	--------------------------------



NC-3, 14 MAY 2026 to 11 JUN 2026

NC-3, 14 MAY 2026 to 11 JUN 2026

ELEV 1268	<b>D</b>	TDZE 1262
-----------	----------	-----------



3000	AWAKE	FANDR	INOYU	4 NM Holding Pattern
*LNAV only	*1.5 NM to RW20			
		199°	019°	3000
		3000		GP 3.00° TCH 47
	1.5 NM	3.7 NM	6.3 NM	

CATEGORY	A	B	C	D
LPV DA	1531-1 269 (300-1)			
LNAV/VNAV DA	1656-1½ 394 (400-1½)			
LNAV MDA	1780-¾ 518 (600-¾)	1780-1½ 518 (600-1½)	1780-1¾ 518 (600-1¾)	1780-1¾ 518 (600-1¾)
CIRCLING	1780-1 512 (600-1)	1820-1 552 (600-1)	1820-1½ 552 (600-1½)	1920-2 652 (700-2)