

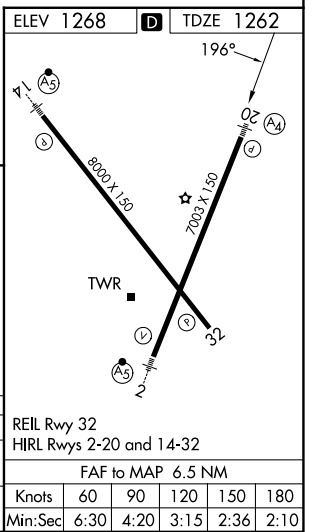
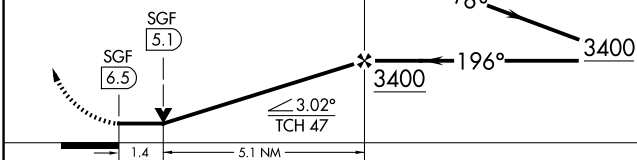
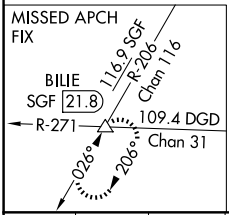
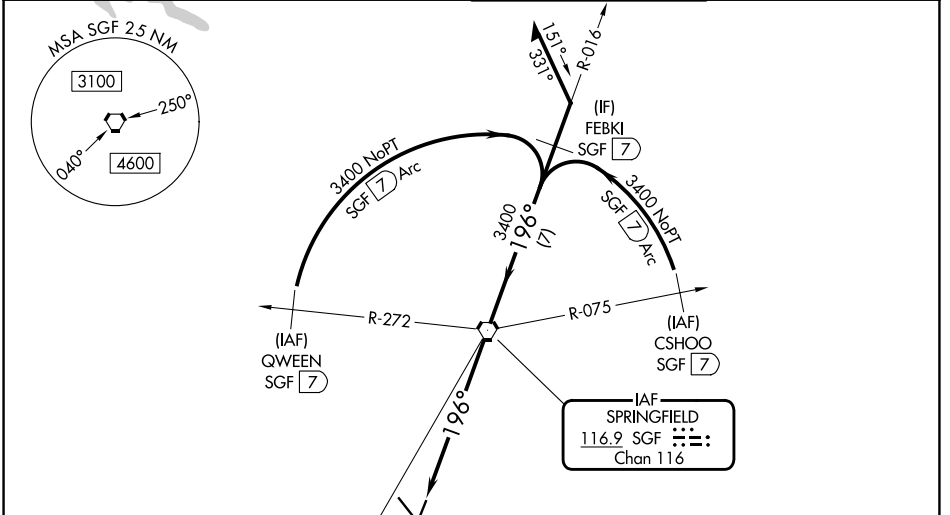
VORTAC SGF 116.9 Chan 116	APP CRS 196°	Rwy Ldg TDZE Apt Elev	7003 1262 1268
---	------------------------	-----------------------------	---

VOR or TACAN RWY 20

SPRINGFIELD-BRANSON NTL (SGF)

DME required.		MALS A4	MISSED APPROACH: Climb to 3000 then right turn to intercept SGF R-206 to BILIE INT/SGF 21.8 DME and hold.
<p>▼ NA Rwy 20 helicopter visibility reduction below 3/4 SM NA. For inop ALS, increase S-20 Cat E to 1 3/8 SM. VDP NA when using HFJ altimeter setting. When local altimeter setting not received, use HFJ altimeter setting: increase all MDAs 100 feet; increase S-20 visibility Cats C, D and E 1/4 SM, and Circling visibility Cat C and D 1/2 SM. For inop ALS, use HFJ altimeter setting: increase S-20 visibility Cats C, D and E to 1 3/4 SM.</p>			

ATIS 135.125	SPRINGFIELD APP CON 124.95 290.5	SPRINGFIELD TOWER 119.9 257.8	GND CON 121.9 251.15
------------------------	--	---	--------------------------------



CATEGORY	A	B	C	D	E
S-20	1760-3/4 498 (500-3/4)		1760-1 1/8 498 (500-1 1/8)		
CIRCLING	1760-1 492 (500-1)	1820-1 552 (600-1)	1820-1 1/2 552 (600-1 1/2)	1920-2 652 (700-2)	2080-3 812 (900-3)

NC-3, 14 MAY 2026 to 11 JUN 2026

NC-3, 14 MAY 2026 to 11 JUN 2026