

WAAS CH <b>40405</b> <b>W09A</b>	APP CRS <b>093°</b>	Rwy Ldg <b>4801</b> TDZE <b>3</b> Apt Elev <b>3</b>
--	------------------------	---

# RNAV (GPS) RWY 9

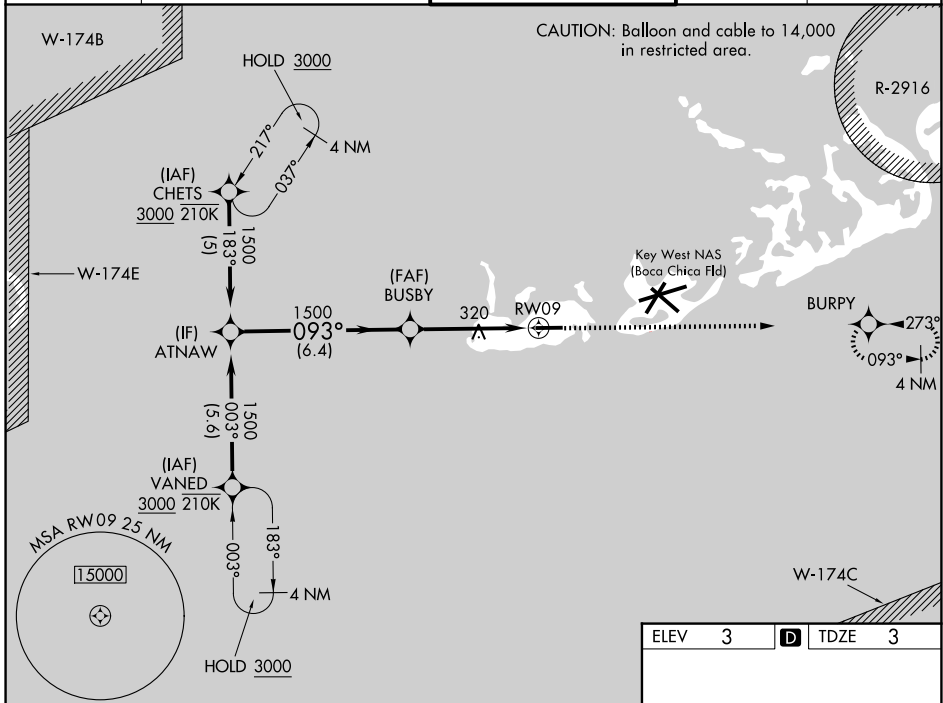
KEY WEST INTL (EYW)

RNP APCH-GPS.

▼ For uncompensated Baro-VNAV systems, LNAV/VNAV NA below 12°C or above 54°C.  
 ▲ Rwy 9 helicopter visibility reduction below 3/4 SM NA. Baro-VNAV and VDP NA when using  
 W NQX altimeter setting. When local altimeter setting not received, use NQX altimeter setting.

MISSED APPROACH: Climb to 2000 direct BURPY and hold.

ATIS <b>119.675</b>	NAVY KEY WEST APP CON * <b>124.025 313.7</b>	KEY WEST TOWER * <b>118.2 (CTAF) 0 257.8</b>	GND CON <b>121.9</b>	UNICOM <b>122.95</b>
------------------------	---	---	-------------------------	-------------------------



SE-3, 14 MAY 2026 to 11 JUN 2026

SE-3, 14 MAY 2026 to 11 JUN 2026

ELEV 3		D TDZE 3		
CATEGORY	A	B	C	D
LPV DA	253-1 250 (300-1)			
LNAV/VNAV DA	425-1 422 (500-1 1/4)			
LNAV MDA	580-1	577 (600-1)	580-1 5/8	577 (600-1 5/8)
CIRCLING	580-1	577 (600-1)	620-1 3/4 617 (700-1 3/4)	620-2 617 (700-2)

GP 3.00° TCH 35

2000 BURPY

093°

5076 X 100

TWR

MIRL Rwy 9-27  
REIL Rws 9 and 27