

APP CRS	Rwy Ldg	7200
137°	TDZE	579
	Apt Elev	589

RNAV (GPS) RWY 14

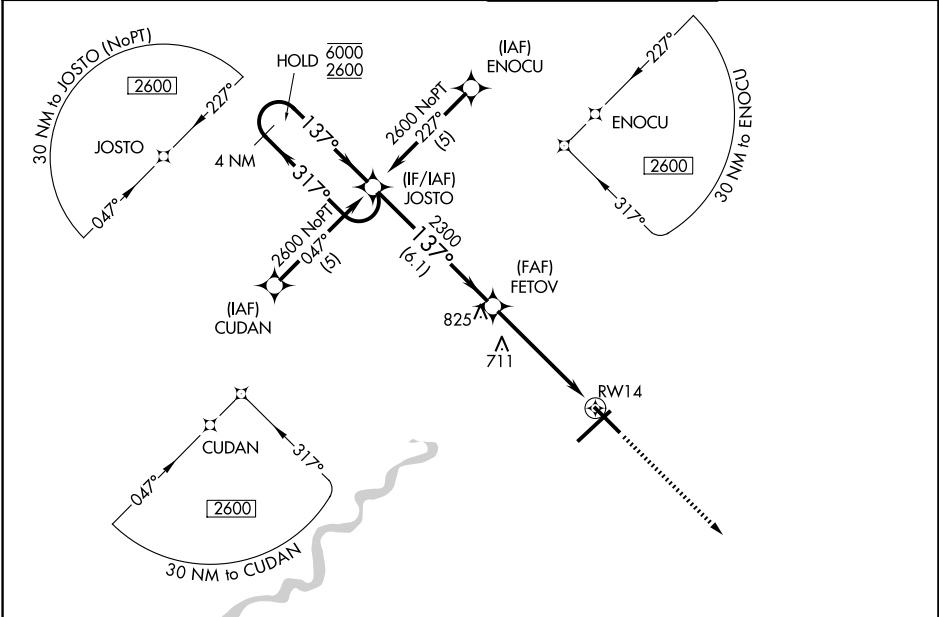
TERRE HAUTE RGNL (HUF)

RNP APCH.

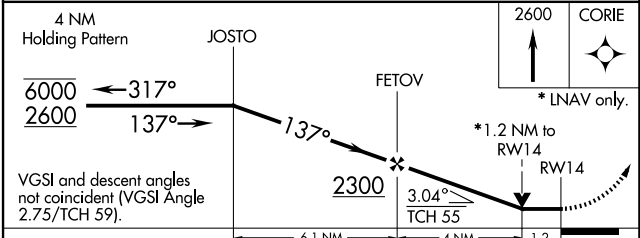
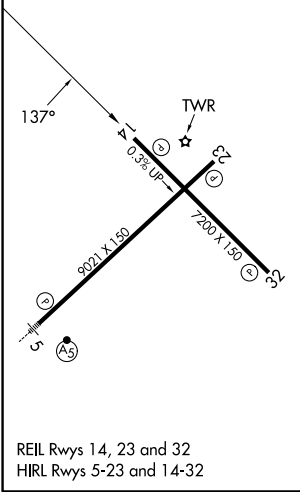
⚠ VDP NA when using Paris altimeter setting. When local altimeter setting not received, use Paris altimeter setting and increase all MDA 80 feet, increase LNAV and Circling Cat C/D visibility ¼ SM. Rwy 14 helicopter visibility reduction below ¾ SM NA.

MISSED APPROACH:
Climb to 2600 direct CORIE and hold.

ATIS 127.5 269.375	HULMAN APP CON 125.45 339.8	HULMAN TOWER 134.725 322.475	GND CON 121.6 348.6
------------------------------	---------------------------------------	--	-------------------------------



ELEV 589	D	TDZE 579
----------	----------	----------



VGSI and descent angles not coincident (VGSI Angle 2.75/TCH 59).				
CATEGORY	A	B	C	D
LNAV MDA	1140-1	561 (600-1)	1140-1½	561 (600-1½)
CIRCLING	1140-1	551 (600-1)	1220-1¾ 631 (700-1¾)	1220-2 631 (700-2)

EC-2, 14 MAY 2026 to 11 JUN 2026

EC-2, 14 MAY 2026 to 11 JUN 2026