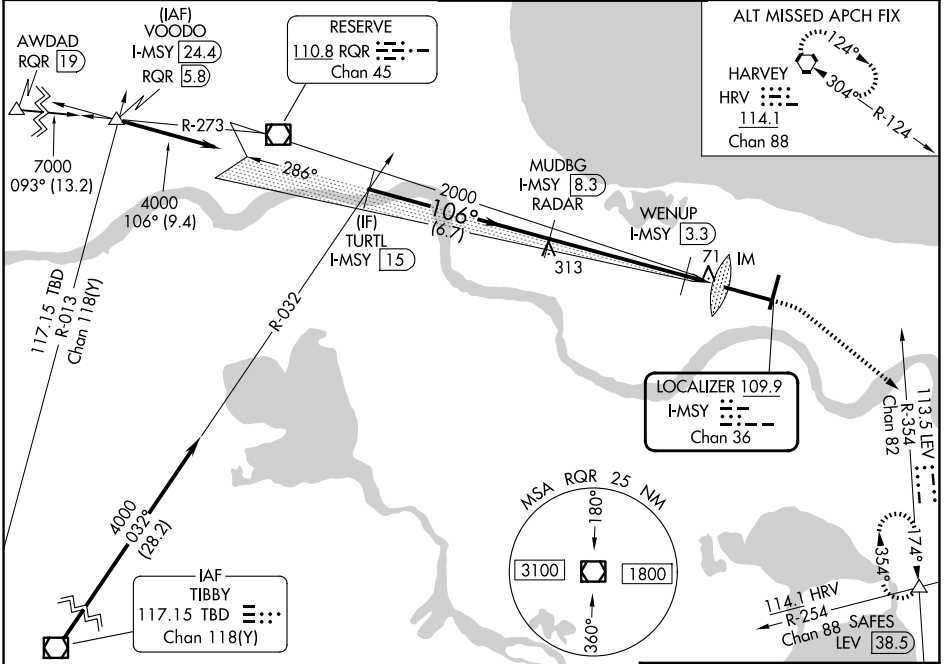


LOC/DME I-MSY <b>109.9</b> Chan <b>36</b>	APP CRS <b>106°</b>	Rwy Ldg <b>9800</b> TDZE <b>3</b> Apt Elev <b>3</b>
---	------------------------	---

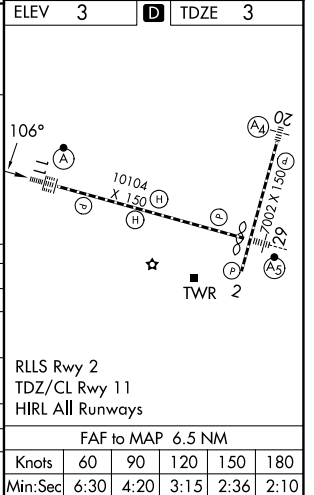
# ILS or LOC RWY 11

LOUIS ARMSTRONG NEW ORLEANS INTL (MSY)

RADAR or DME required.		ALSF-2 	MISSED APPROACH: Climb to 800 then climbing right turn to 2000 on heading 130° and on LEV VORTAC R-354 to SAFES INT/LEV 38.5 DME and hold.
D-ATIS <b>127.55</b>	NEW ORLEANS APP CON <b>125.5 350.35</b> <b>133.15 290.3</b> (W) (E)	NEW ORLEANS TOWER <b>119.5 254.3</b>	GND CON <b>121.9 273.525</b>



TURTLE I-MSY (15)	VGS and ILS glidepath not coincident (VGS Angle 2.80/TCH 73).		800	2000	SAFES
4000	MUDBG I-MSY (8.3) RADAR 2000	WENUP I-MSY (3.3)	↑	hdg 130°	LEV R-354
GS 2.80° TCH 56	2000	500	6.7 NM	5 NM	0.6 0.8 0.1
CATEGORY	A	B	C	D	
S-ILS 11	203/18		200 (200-½)		
S-LOC 11	500/24	497 (500-½)	500/50	497 (500-1)	
CIRCLING	520-1 517 (600-1)	540-1 537 (600-1)	580-1½ 577 (600-1½)	580-2 577 (600-2)	
WENUP FIX MINIMUMS					
S-LOC 11	340/24	337 (400-½)	340/26	337 (400-½)	
CIRCLING	520-1 517 (600-1)	540-1 537 (600-1)	580-1½ 577 (600-1½)	580-2 577 (600-2)	



SC-4, 14 MAY 2026 to 11 JUN 2026

SC-4, 14 MAY 2026 to 11 JUN 2026