

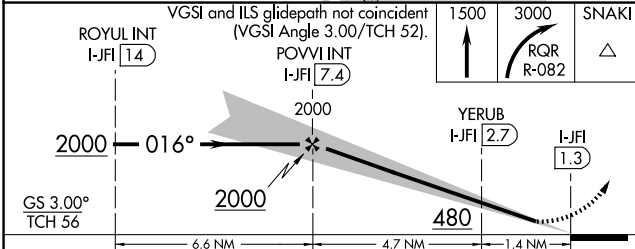
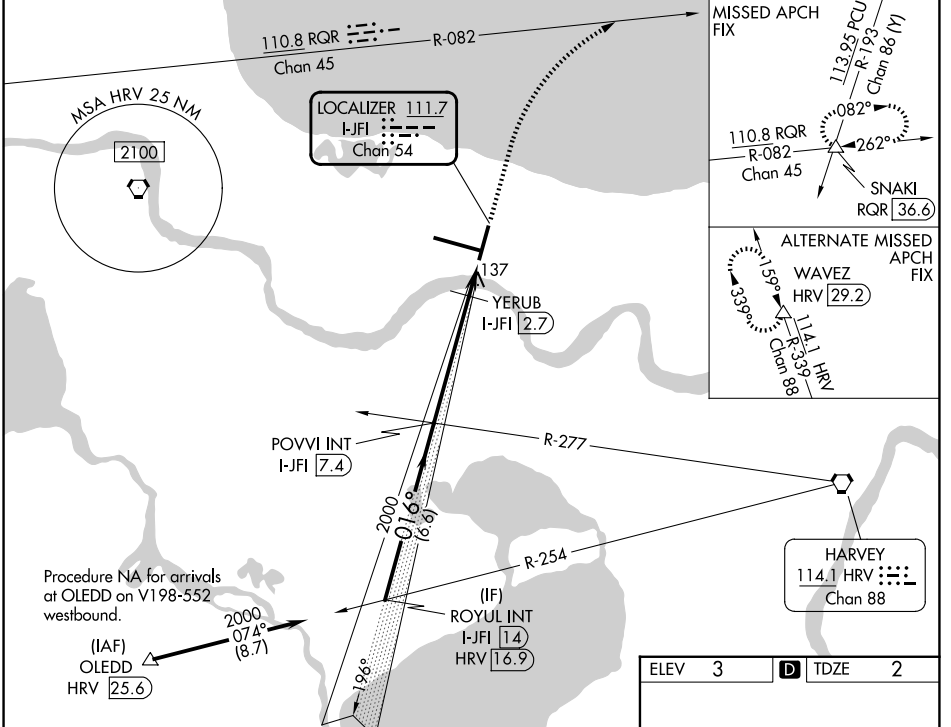
LOC/DME I-JFI 111.7 Chan 54	APP CRS 016°	Rwy Ldg 7002 TDZE 2 Apt Elev 3
---	------------------------	---

ILS or LOC RWY 2

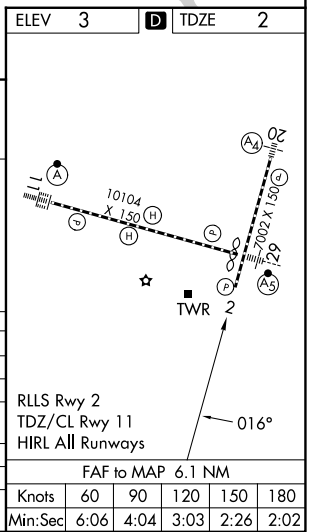
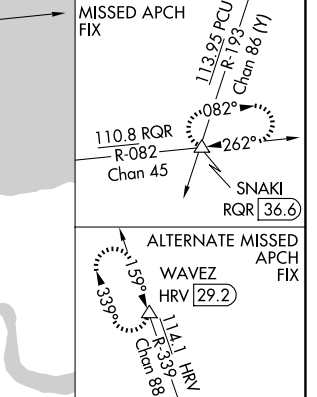
LOUIS ARMSTRONG NEW ORLEANS INTL (MSY)

Autopilot coupled approach NA below 880. Rwy 2 helicopter visibility reduction below RVR 4000 NA. MISSED APPROACH: Climb to 1500 then climbing right turn to 3000 on RQR VOR/DME R-082 to SNAKI INT/RQR 36.6 DME and hold.

D-ATIS 127.55	NEW ORLEANS APP CON 125.5 350.35 (W) 133.15 290.3 (E)	NEW ORLEANS TOWER 119.5 254.3	GND CON 121.9 273.525
-------------------------	---	---	---------------------------------



CATEGORY	A	B	C	D
S-ILS 2		415/60	413 (500-1¼)	
S-LOC 2	480/55	478 (500-1)	480-1⅓	478 (500-1⅓)
CIRCLING	520-1	540-1	580-1½	580-2
	517 (600-1)	537 (600-1)	577 (600-1½)	577 (600-2)
YERUB FIX MINIMUMS				
S-LOC 2	440/55	438 (500-1)	440-1¼	438 (500-1¼)
CIRCLING	520-1	540-1	580-1½	580-2
	517 (600-1)	537 (600-1)	577 (600-1½)	577 (600-2)



SC-4, 14 MAY 2026 to 11 JUN 2026

SC-4, 14 MAY 2026 to 11 JUN 2026

FAF to MAP 6.1 NM					
Knots	60	90	120	150	180
Min:Sec	6:06	4:04	3:03	2:26	2:02