

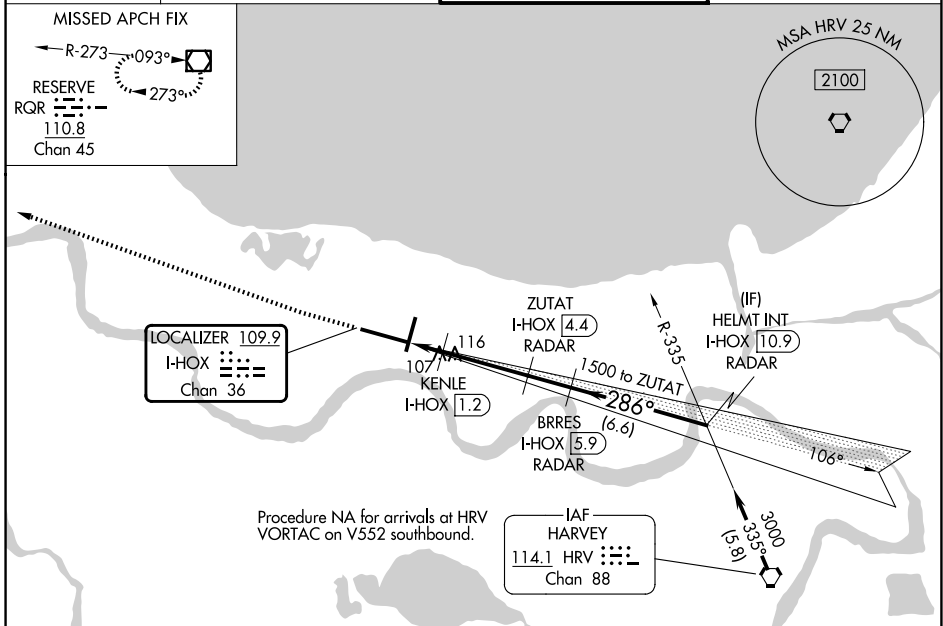
LOC/DME I-HOX 109.9 Chan 36	APP CRS 286°	Rwy Ldg 9800 TDZE 2 Apt Elev 3
---	------------------------	---

ILS or LOC RWY 29

LOUIS ARMSTRONG NEW ORLEANS INTL (MSY)

DME or RADAR required.	MALSR 	MISSED APPROACH: Climb to 600 then climbing right turn to 3000 direct RQR VOR/DME and hold.
▼ For inop ALS, increase S-LOC 29 Cat C/D visibility to 1 3/8 SM and increase KENLE Fix Minimums S-LOC 29 Cat C/D visibility to RVR 5500. * RVR 1800 authorized with use of FD or AP or HUD to DA.		

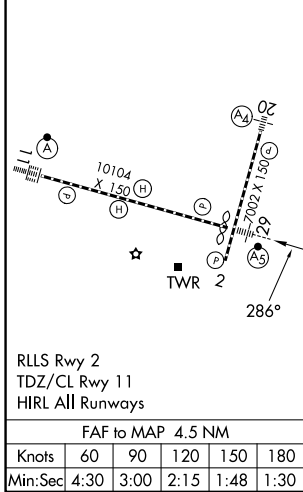
D-ATIS 127.55	NEW ORLEANS APP CON 125.5 350.35 (W) 133.15 290.3 (E)	NEW ORLEANS TOWER 119.5 254.3	GND CON 121.9 273.525
-------------------------	---	---	---------------------------------



SC-4, 14 MAY 2026 to 11 JUN 2026

SC-4, 14 MAY 2026 to 11 JUN 2026

ELEV 3	D	TDZE 2	600	3000	RQR	VGSI and ILS glidepath not coincident (VGSI Angle 3.00/TCH 68).
--------	----------	--------	-----	------	-----	---



	A	B	C	D
S-ILS 29*	202/24 200 (200-1/2)			
S-LOC 29	480/24	478 (500-1/2)	480/50	478 (500-1)
CIRCLING	520-1	540-1	580-1 1/2	580-2
	517 (600-1)	537 (600-1)	577 (600-1 1/2)	577 (600-2)
KENLE FIX MINIMUMS				
S-LOC 29	360/24	358 (400-1/2)	360/30	358 (400-3/8)
CIRCLING	520-1	540-1	580-1 1/2	580-2
	517 (600-1)	537 (600-1)	577 (600-1 1/2)	577 (600-2)