

RNAV 1 - DME/DME/IRU or GPS.
RADAR required.

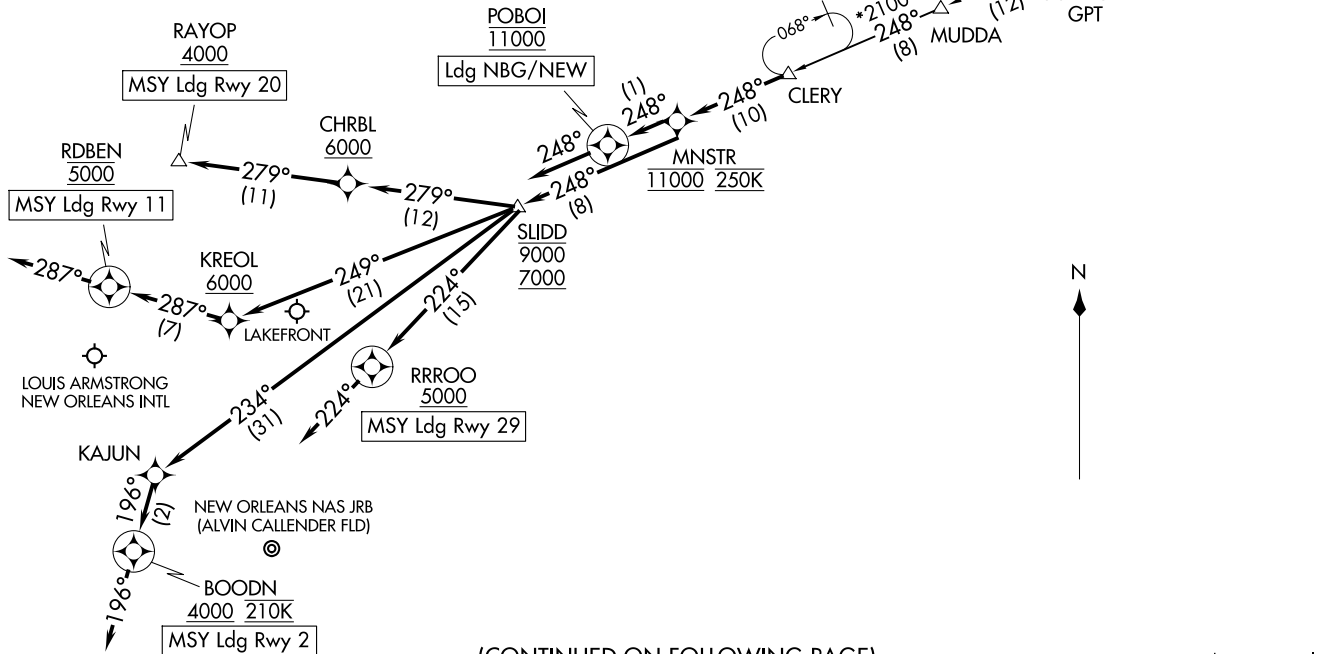
NEW ORLEANS APP CON
125.5 350.35 (W)
133.15 290.3 (E)
KNBG ATIS
279.55
MSY D-ATIS
127.55
NEW ATIS
124.9

MNSTR TWO ARRIVAL (RNAV)
(CLERY, MNSTR2) 14MAY26

(CLERY, MNSTR2) 26134
MNSTR TWO ARRIVAL (RNAV)

AL-609 (FAA)

NEW ORLEANS, LOUISIANA



(CONTINUED ON FOLLOWING PAGE)

NOTE: Chart not to scale.

NEW ORLEANS, LOUISIANA

ARRIVAL ROUTE DESCRIPTION

GULFPORT TRANSITION (GPT.MNSTR2)

SEMMES TRANSITION (SJI.MNSTR2)

MSY: From CLERY on track 248° to cross MNSTR at 11000 and at 250K, then on track 248° to cross SLIDD between 7000 and 9000.

LANDING MSY RUNWAY 2: From SLIDD on track 234° to KAJUN, then on track 196° to cross BOODN at or above 4000 and at 210K, then on track 196°. Expect RADAR vectors to final approach course.

LANDING MSY RUNWAY 11: From SLIDD on track 249° to cross KREOL at or above 6000, then on track 287° to cross RDBEN at 5000, then on track 287°. Expect RADAR vectors to final approach course.

LANDING MSY RUNWAY 20: From SLIDD on track 279° to cross CHRBL at or above 6000, then on track 279° to cross RAYOP at or above 4000. Expect LOC or RNAV RWY 20 approach.

LANDING MSY RUNWAY 29: From SLIDD on track 224° to cross RRROO at or above 5000, then on track 224°. Expect RADAR vectors to final approach course.

LANDING NEW/NBG: From CLERY on track 248° to cross MNSTR at 11000 and at 250K, then on track 248° to cross POBOI at 11000, then on track 248°. Expect RADAR vectors to final approach course.

SC-4, 14 MAY 2026 to 11 JUN 2026

SC-4, 14 MAY 2026 to 11 JUN 2026