

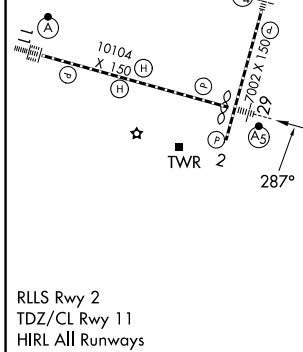
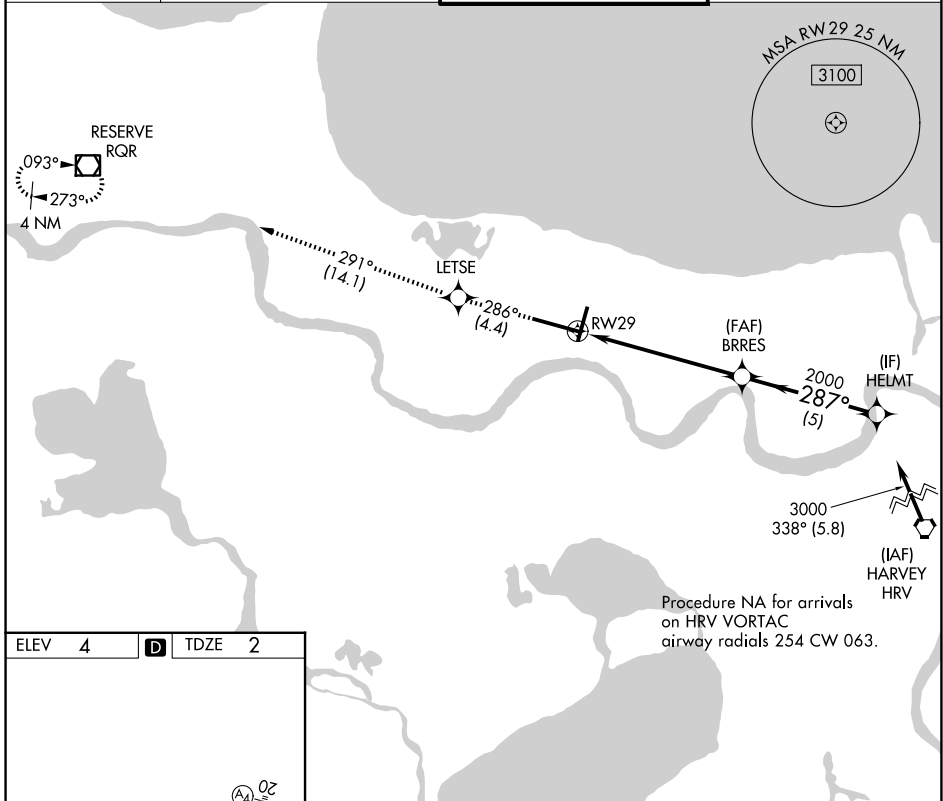
APP CRS	Rwy Ldg	<b>9800</b>
<b>287°</b>	TDZE	<b>2</b>
	Apt Elev	<b>4</b>

# RNAV (RNP) Z RWY 29

LOUIS ARMSTRONG NEW ORLEANS INTL (MSY)

<p>For uncompensated Baro-VNAV systems, procedure NA below -1°C (31°F) or above 54°C (130°F). GPS Required.</p>	<p>MALSR</p>	<p>MISSED APPROACH: Climb to 3000 on track 286° to LETSE and on track 291° to RQR VOR/DME and hold.</p>
---	--------------	---

D-ATIS <b>127.55</b>	NEW ORLEANS APP CON <b>125.5 350.35</b> (W) <b>133.15 290.3</b> (E)	NEW ORLEANS TOWER <b>119.5 254.3</b>	GND CON <b>121.9 273.525</b>
-------------------------	---	---	---------------------------------



3000	↑	tr 286°	LETSE	tr 291°	RQR	VGSI and RNAV glidepath not coincident (VGSI Angle 3.00/TCH 68).
						HELMT 3000
			RW29		BRRES 2000	2000
						GP 3.00° TCH 53
			6.1 NM		5 NM	
CATEGORY	A	B	C	D		
RNP 0.30 DA		382/40	380 (400-¾)			

**AUTHORIZATION REQUIRED**

SC-4, 14 MAY 2026 to 11 JUN 2026

SC-4, 14 MAY 2026 to 11 JUN 2026