

WAAS CH <b>40007</b> <b>W20A</b>	APP CRS <b>197°</b>	Rwy Ldg <b>6948</b> TDZE <b>-1</b> Apt Elev <b>3</b>
--	------------------------	--

# RNAV (GPS) Y RWY 20

LOUIS ARMSTRONG NEW ORLEANS INTL (MSY)

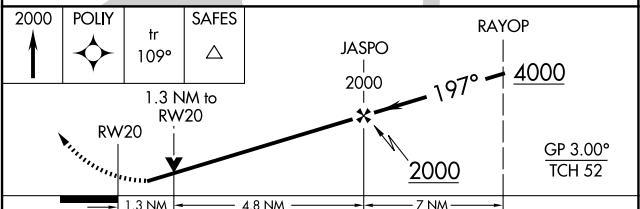
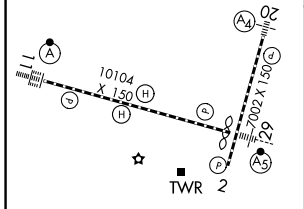
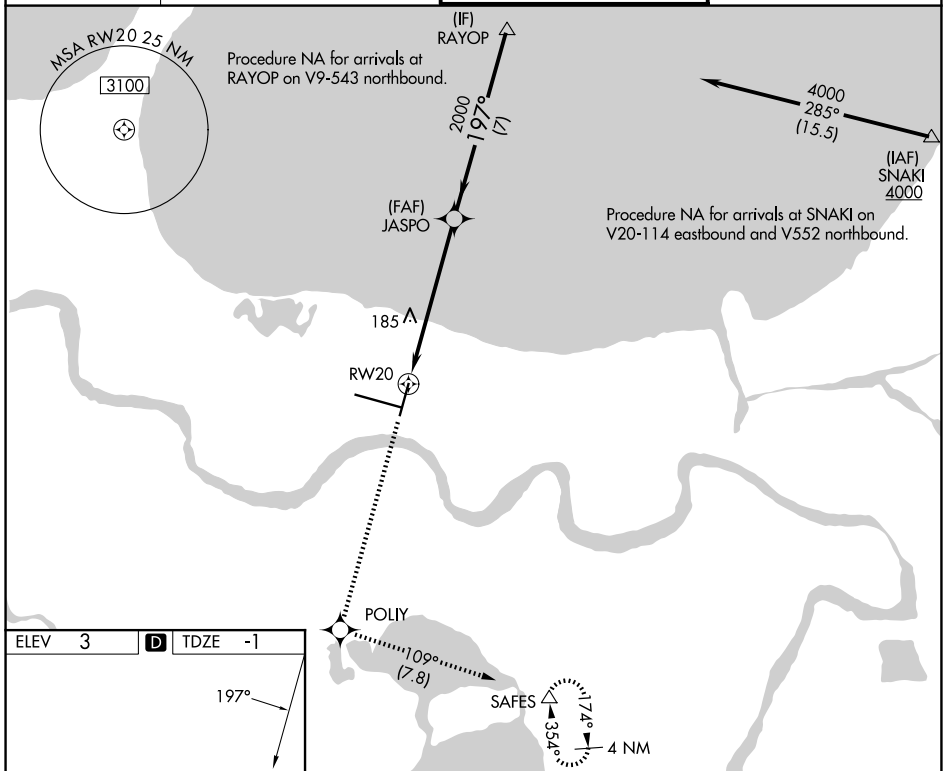
RNP APCH - GPS.

▼ Rwy 20 helicopter visibility reduction below RVR 4000 NA. Inop table does not apply to LPV all Cats. For uncompensated Baro-VNAV systems, LNAV/VNAV NA below -1°C or above 54°C. For inop ALS, increase LNAV Cat C/D visibility to 1½ SM.

MALS

MISSED APPROACH:  
Climb to 2000 direct POLY and on track 109° to SAFES and hold.

D-ATIS <b>127.55</b>	NEW ORLEANS APP CON <b>125.5 350.35 (W)</b> <b>133.15 290.3 (E)</b>	NEW ORLEANS TOWER <b>119.5 254.3</b>	GND CON <b>121.9 273.525</b>
-------------------------	---	---	---------------------------------



CATEGORY	A	B	C	D
LPV DA		249/40	250 (300-¾)	
LNAV/VNAV DA		325/40	326 (400-¾)	
LNAV MDA	460/40	461 (500-¾)	460/55	461 (500-1)
CIRCLING	520-1 517 (600-1)	540-1 537 (600-1)	580-1½ 577 (600-1½)	580-2 577 (600-2)

RLS Rwy 2  
TDZ/CL Rwy 11  
HIRL All Runways

SC-4, 14 MAY 2026 to 11 JUN 2026

SC-4, 14 MAY 2026 to 11 JUN 2026