

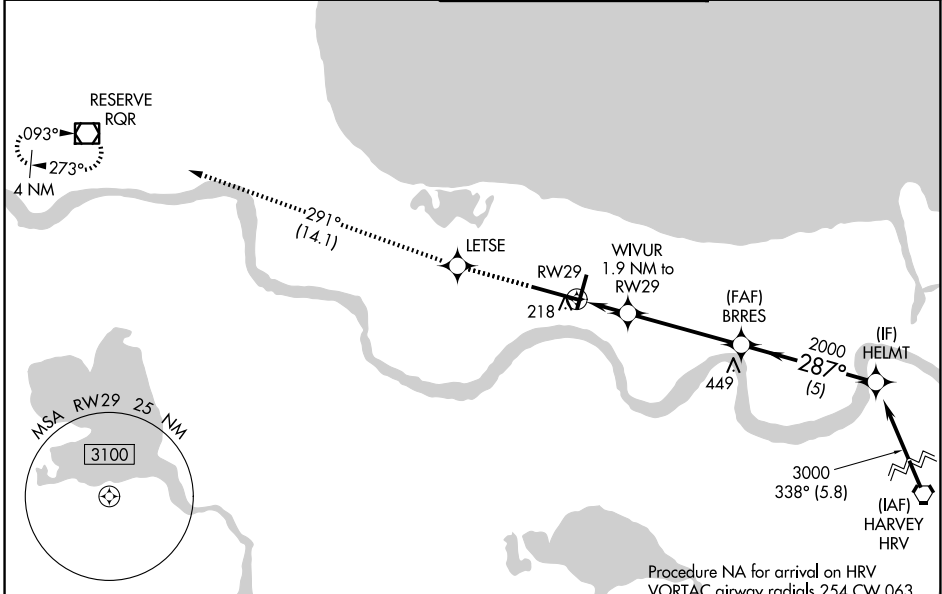
WAAS CH 49006 W29A	APP CRS 287°	Rwy Ldg TDZE Apt Elev	9800 2 3
--	------------------------	-----------------------------	-------------------------------------

RNAV (GPS) Y RWY 29

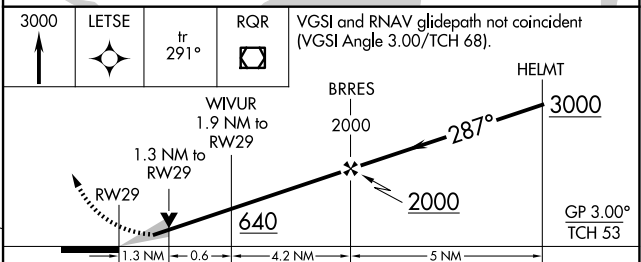
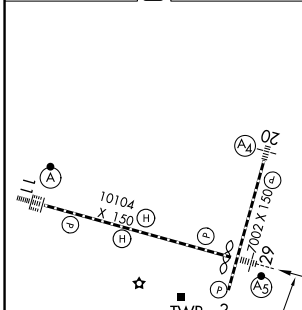
LOUIS ARMSTRONG NEW ORLEANS INTL (MSY)

RNP APCH - GPS.	MALSR	MISSED APPROACH: Climb to 3000 direct LETSE and on track 291° to RQR VOR/DME and hold.
<p>▼ For uncompensated Baro-VNAV systems, LNAV/VNAV NA below -1°C or above 54°C. For inop ALS, increase LNAV/VNAV all Cats visibility to RVR 5000 and LNAV Cat C/D visibility to 1$\frac{1}{2}$ SM.</p> <p>* RVR 1800 authorized with use of FD or AP or HUD to DA.</p>		

D-ATIS 127.55	NEW ORLEANS APP CON 125.5 350.35 (W) 133.15 290.3 (E)	NEW ORLEANS TOWER 119.5 254.3	GND CON 121.9 273.525
-------------------------	---	---	---------------------------------



ELEV 3	D	TDZE 2
--------	----------	--------



CATEGORY	A	B	C	D
LPV DA *		202/24	200 (200- $\frac{1}{2}$)	
LNAV/VNAV DA		380/35	378 (400- $\frac{5}{8}$)	
LNAV MDA	480/24	478 (500- $\frac{1}{2}$)	480/50	478 (500-1)
CIRCLING	520-1 517 (600-1)	540-1 537 (600-1)	580-1 $\frac{1}{2}$ 577 (600-1 $\frac{1}{2}$)	580-2 577 (600-2)

RLS Rwy 2
TDZ/CL Rwy 11
HIRL All Runways

SC-4, 14 MAY 2026 to 11 JUN 2026

SC-4, 14 MAY 2026 to 11 JUN 2026