

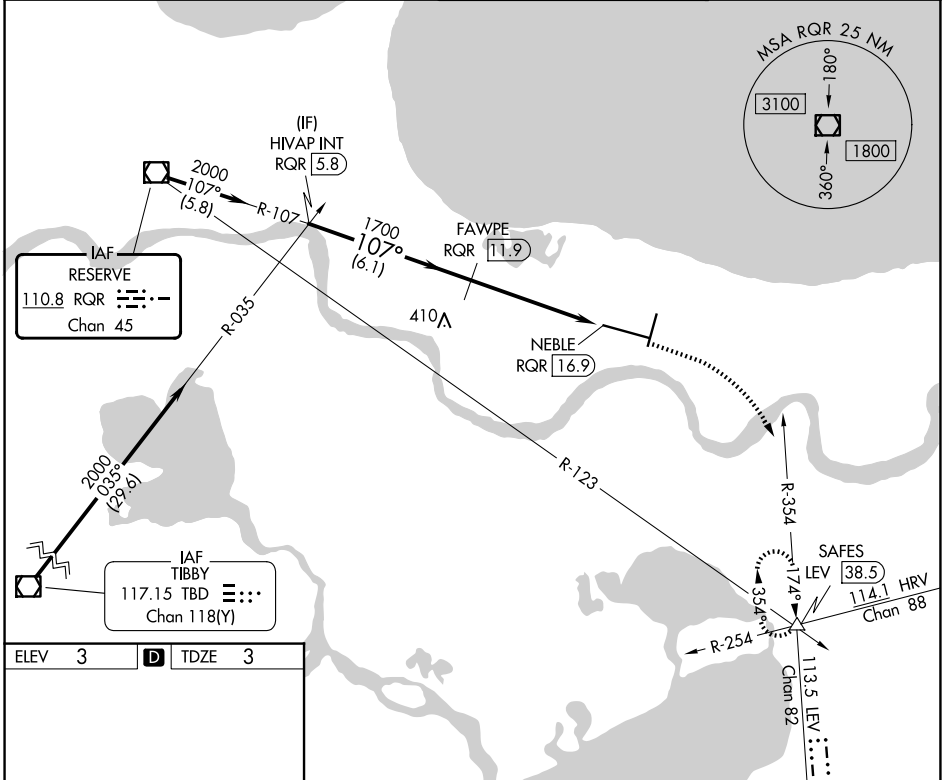
# VOR/DME RWY 11

LOUIS ARMSTRONG NEW ORLEANS INTL (MSY)

VOR/DME RQR	APP CRS	Rwy Ldg TDZE	9800
110.8	107°	Apt Elev	3
Chan 45			

	MISSED APPROACH: Climb to 800 then climbing right turn to 2000 on heading 130° and on LEV VORTAC R-354 to SAFES INT/LEV 38.5 DME and hold.

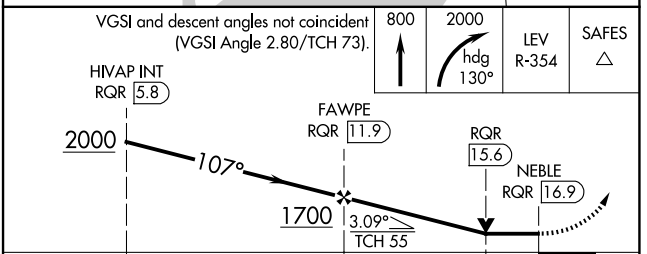
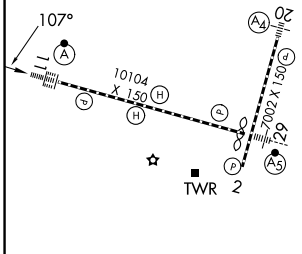
D-ATIS <b>127.55</b>	NEW ORLEANS APP CON <b>125.5 350.35</b> (W) <b>133.15 290.3</b> (E)	NEW ORLEANS TOWER <b>119.5 254.3</b>	GND CON <b>121.9 273.525</b>
-------------------------	---	---	---------------------------------



SC-4, 14 MAY 2026 to 11 JUN 2026

SC-4, 14 MAY 2026 to 11 JUN 2026

ELEV 3	<b>D</b>	TDZE 3
--------	----------	--------



CATEGORY	A	B	C	D
S-11	460/24	457 (500-½)	460/45	457 (500-¾)
CIRCLING	520-1 517 (600-1)	540-1 537 (600-1)	580-1½ 577 (600-1½)	580-2 577 (600-2)