

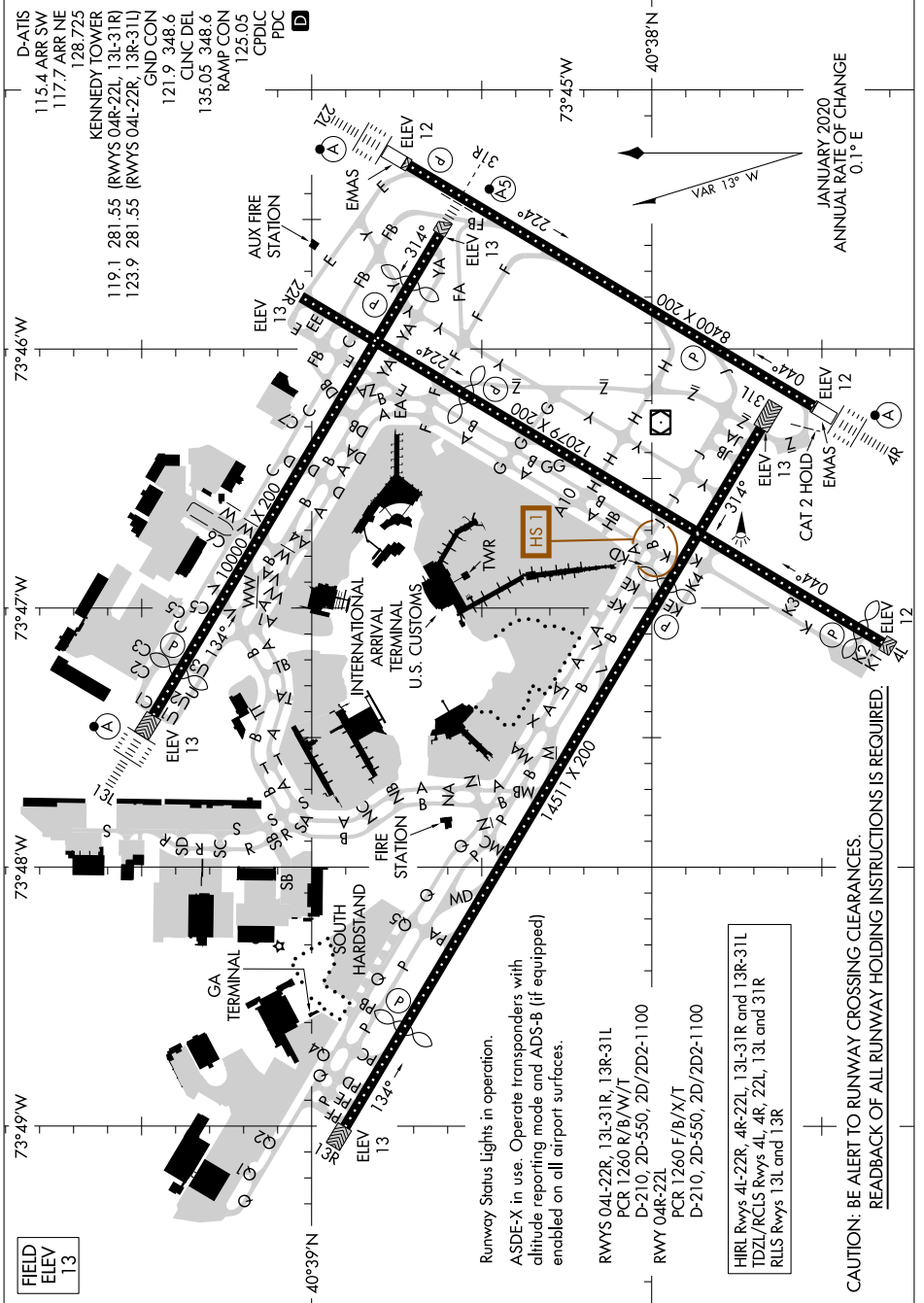
# AIRPORT DIAGRAM

AL-610 (FAA)

JOHN F KENNEDY INTL (JFK)  
NEW YORK, NEW YORK

NE-2, 14 MAY 2026 to 11 JUN 2026

NE-2, 14 MAY 2026 to 11 JUN 2026



FIELD  
ELEV  
13

Runway Status lights in operation.  
ASDE-X in use. Operate transponders with  
altitude reporting mode and ADS-B (if equipped)  
enabled on all airport surfaces.

RWYS 04L-22R, 13L-31R, 13R-31L  
PCR 1260 R/B/W/T  
D-210, 2D-550, 2D/2D2-1100  
RWY 04R-22L  
PCR 1260 F/B/X/T  
D-210, 2D-550, 2D/2D2-1100

HIRL Rlys 4L-22R, 4R-22L, 13L-31R and 13R-31L  
TDZL/RCLS Rlys 4L, 4R, 22L, 13L and 31R  
RLS Rlys 13L and 13R

CAUTION: BE ALERT TO RUNWAY CROSSING CLEARANCES.  
READBACK OF ALL RUNWAY HOLDING INSTRUCTIONS IS REQUIRED.

# AIRPORT DIAGRAM

NEW YORK, NEW YORK  
JOHN F KENNEDY INTL (JFK)