

# CAMRN FIVE ARRIVAL

NEW YORK APP CON  
128.125 269.0  
D-ATIS  
128.725 (ARR/DEP)  
117.7 (ARR-NE)  
115.4 (ARR-SW)

RADAR required.

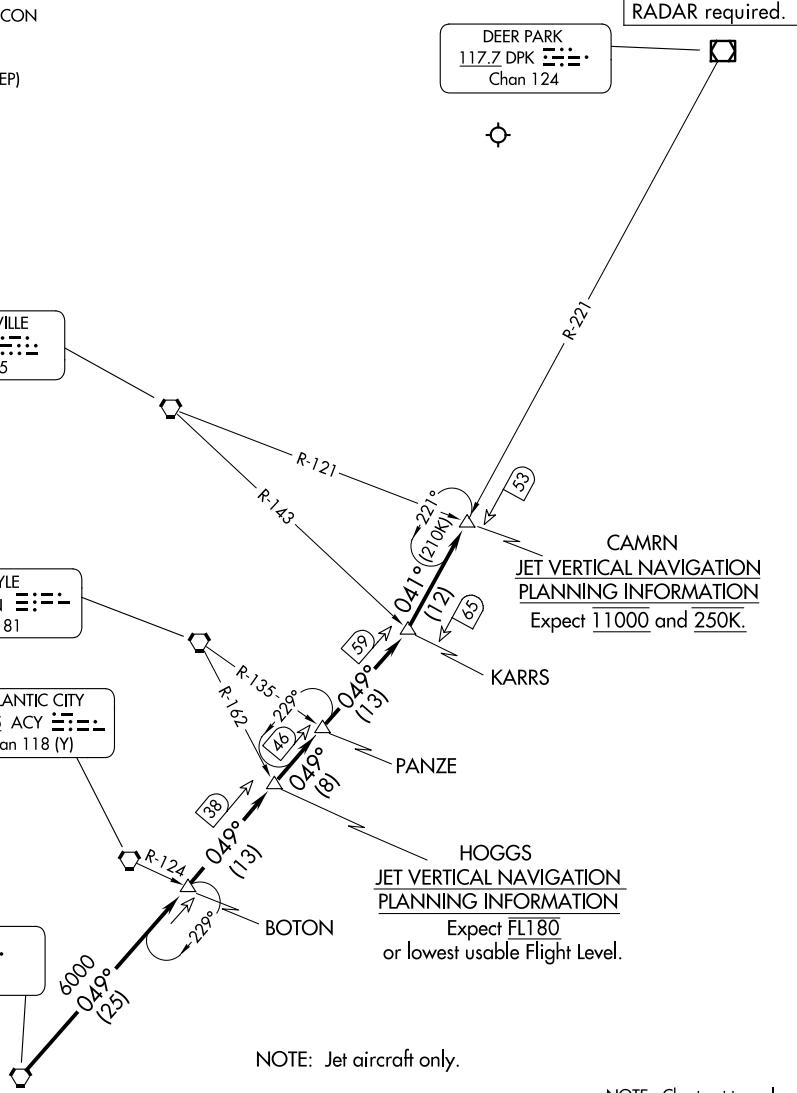
DEER PARK  
117.7 DPK  
Chan 124

ROBBINSVILLE  
113.8 RBV  
Chan 85

COYLE  
113.4 CYN  
Chan 81

ATLANTIC CITY  
117.15 ACY  
Chan 118 (Y)

SEA ISLE  
114.8 SIE  
Chan 95



JET VERTICAL NAVIGATION  
PLANNING INFORMATION  
Expect 11000 and 250K.

JET VERTICAL NAVIGATION  
PLANNING INFORMATION  
Expect FL180  
or lowest usable Flight Level.

NOTE: Jet aircraft only.

NOTE: Chart not to scale.

## ARRIVAL ROUTE DESCRIPTION

From over SIE VORTAC on SIE R-049 and DPK R-221 to CAMRN. Expect radar vectors to final approach course.

NE-2, 14 MAY 2026 to 11 JUN 2026

NE-2, 14 MAY 2026 to 11 JUN 2026