

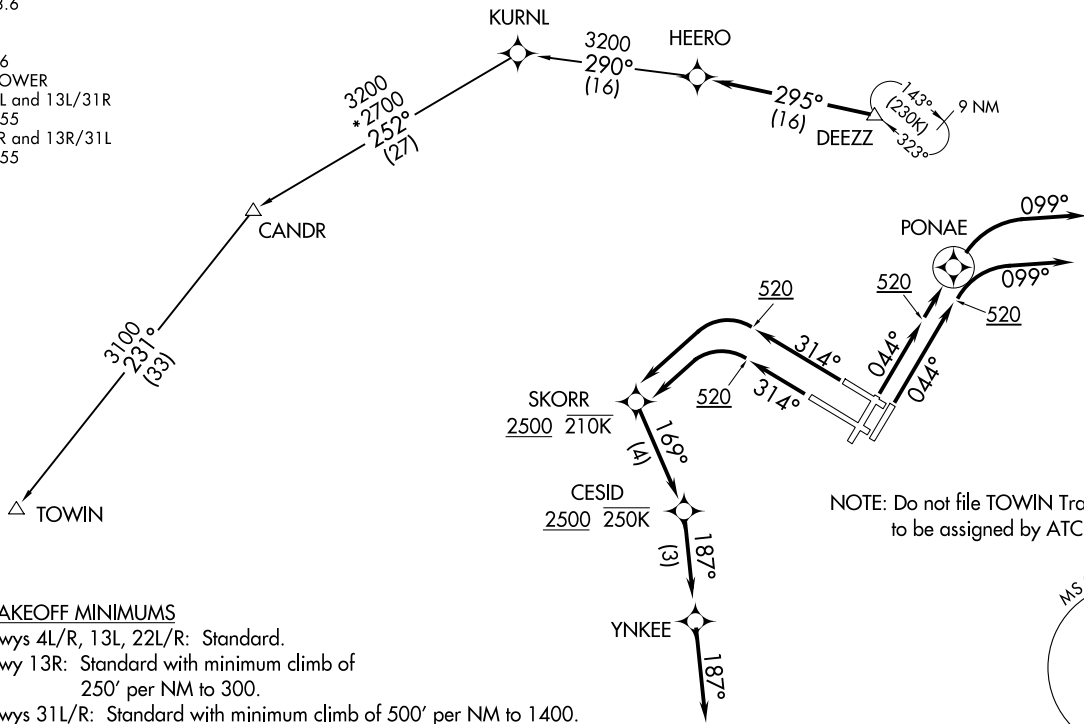
DEEZZ SIX DEPARTURE (RNAV)  
(DEEZZ6; DEEZZ) 19MARP26

NEW YORK, NEW YORK  
JOHN F KENNEDY INTL (JFK)

NEW YORK DEP CON  
135.9 353.75  
D-ATIS  
128.725  
CLNC DEL  
135.05 348.6  
CPDLC  
GND CON  
121.9 348.6  
KENNEDY TOWER  
Rwys 4R/22L and 13L/31R  
119.1 281.55  
Rwys 4L/22R and 13R/31L  
123.9 281.55

RNAV-1 DME/DME/IRU or GPS required.  
RADAR required.

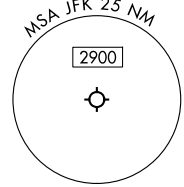
**TOP ALTITUDE:  
5000**



**TAKEOFF MINIMUMS**

Rwys 4L/R, 13L, 22L/R: Standard.  
Rwy 13R: Standard with minimum climb of 250' per NM to 300.  
Rwys 31L/R: Standard with minimum climb of 500' per NM to 1400.

NOTE: Do not file TOWIN Transition - to be assigned by ATC.



(CONTINUED ON FOLLOWING PAGE)

NOTE: Chart not to scale.

(DEEZZ6; DEEZZ) 26078  
DEEZZ SIX DEPARTURE (RNAV)

AL-610 (FAA)  
JOHN F KENNEDY INTL (JFK)  
NEW YORK, NEW YORK

# DEEZZ SIX DEPARTURE (RNAV)



## DEPARTURE ROUTE DESCRIPTION

TAKEOFF RUNWAY 4L: Climb on heading 044° to 520, then direct PONAE, then climbing right turn heading 099°, thence....

TAKEOFF RUNWAY 4R: Climb on heading 044° to 520, then climbing right turn heading 099°, thence....

TAKEOFF RUNWAYS 13L/R, 22L/R: Climb on assigned heading, thence....

TAKEOFF RUNWAYS 31L/R: Climb on heading 314° to 520, then left turn direct SKORR at or above 2500 and at or below 210K, then on track 169° to cross CESID at or above 2500 and at or below 250K, then on track 187° to YNKEE, then on track 187°, thence....

....for vectors to DEEZZ, then on track 295° to HEERO, then on assigned transition, maintain 5000, expect filed altitude 10 minutes after departure.

All aircraft: ATC climb gradient: If unable to accept climb rate advise ATC prior to taxi: Rwy 31L, 31R: 620'/NM to 520.

CANDR TRANSITION (DEEZZ6.CANDR)

TOWIN TRANSITION (DEEZZ6.TOWIN)

NE-2, 14 MAY 2026 to 11 JUN 2026

NE-2, 14 MAY 2026 to 11 JUN 2026