

LOC/DME I-TLK <b>111.5</b> Chan <b>52</b>	APP CRS <b>134°</b>	Rwy Ldg <b>9093</b> TDZE <b>13</b> Apt Elev <b>13</b>
---	------------------------	---

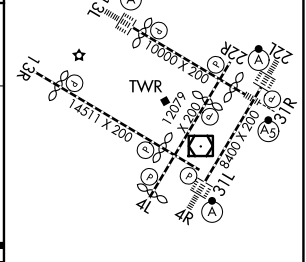
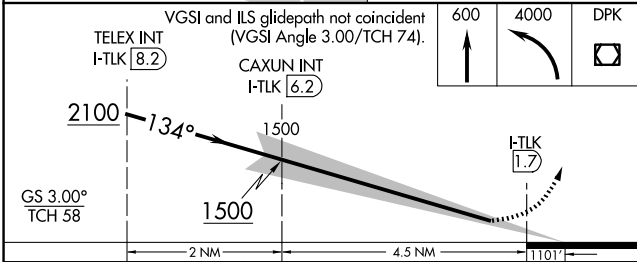
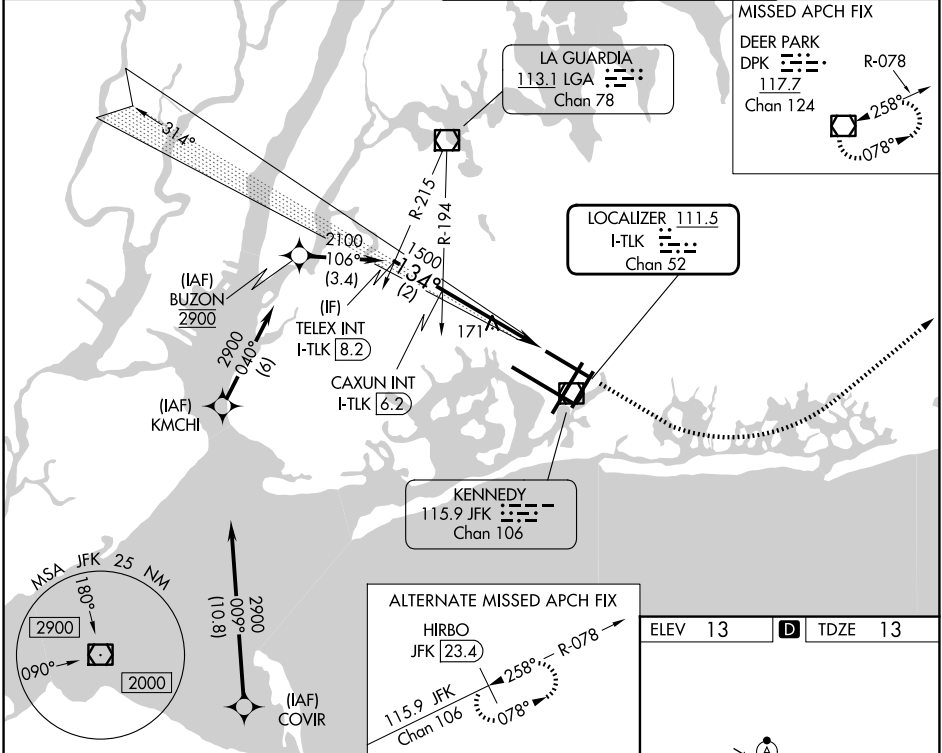
# ILS RWY 13L (CAT II)

JOHN F KENNEDY INTL (JFK)

RNAV 1-GPS or RADAR required for procedure entry.  
From COVIR, KMCHI, BUZON: RNAV-1 GPS required.

ALSF-2  
MISSED APPROACH: Climb to 600 then climbing left turn to 4000 direct DPK VOR/DME and hold.

D-ATIS (SW) <b>115.4</b> (NE) <b>117.7</b> <b>128.725</b>	NEW YORK APP CON <b>128.125</b> <b>269.0</b>	KENNEDY TOWER <b>119.1</b> <b>281.55</b> (4R/22L and 13L/31R) <b>123.9</b> <b>281.55</b> (4L/22R and 13R/31L)	GND CON <b>121.9</b> <b>348.6</b>
--	---	---	--------------------------------------



CATEGORY	A	B	C	D
S-ILS 13L	RA 150/16 150 DA 163			

**CATEGORY II ILS - SPECIAL AIRCREW & AIRCRAFT CERTIFICATION REQUIRED**

RLLS Rwy 13L and 13R  
HIRL all Rwy  
TDZ/CL Rwy 4L, 4R, 13L, 22L and 31R

NE-2, 14 MAY 2026 to 11 JUN 2026

NE-2, 14 MAY 2026 to 11 JUN 2026