

LOC/DME I-HWY <b>110.9</b> Chan <b>46</b>	APP CRS <b>224°</b>	Rwy Ldg <b>8400</b> TDZE <b>12</b> Apt Elev <b>13</b>
---	------------------------	---

# ILS RWY 22L (CAT II & III)

JOHN F KENNEDY INTL (JFK)

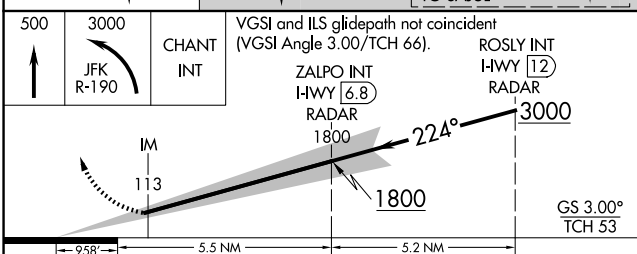
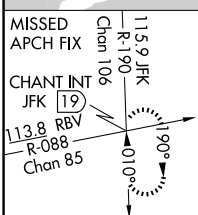
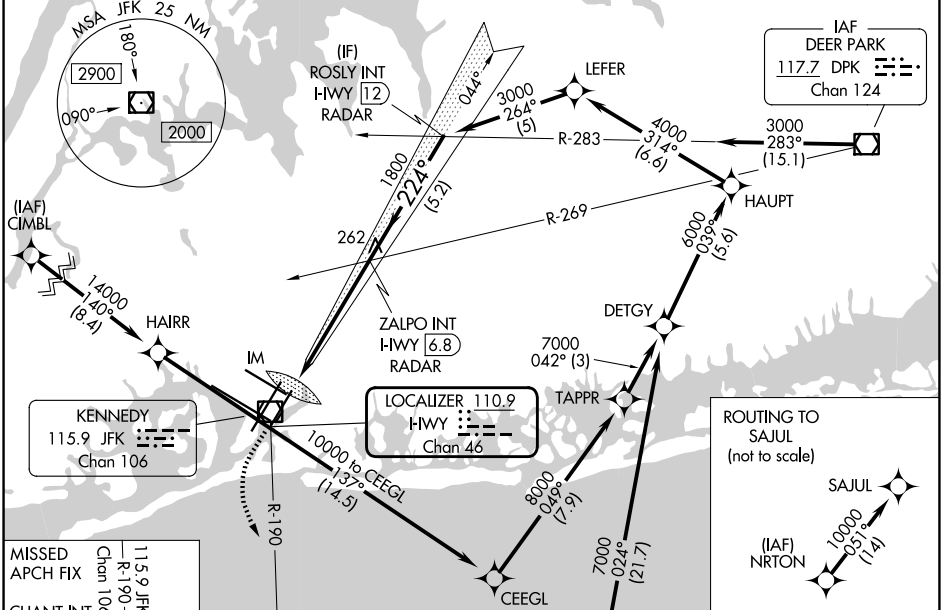
RNAV 1-GPS or RADAR required for procedure entry.  
From CIMBL, NRTON: RNAV 1-GPS required.

ALSIF-2

MISSED APPROACH: Climb to 500 then climbing left turn to 3000 on JFK VOR/DME R-190 to CHANT INT/19 DME and hold.

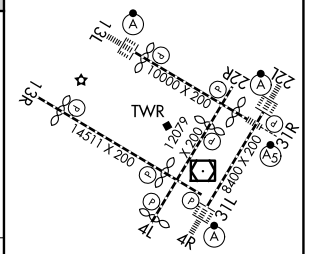
Simultaneous approach authorized.

D-ATIS (SW) <b>115.4</b>	D-ATIS (NE) <b>117.7</b>	NEW YORK APP CON <b>128.125</b> <b>269.0</b>	KENNEDY TOWER <b>119.1</b> <b>281.55</b> <b>123.9</b> <b>281.55</b> (4R/22L and 13L/31R) (4L/22R and 13R/31L)	GND CON <b>121.9</b> <b>348.6</b>
-----------------------------	-----------------------------	---	---	--------------------------------------



500	3000	CHANT INT	VGSI and ILS glidepath not coincident (VGSI Angle 3.00/TCH 66).	ROSLY INT I-HWY 12 RADAR
IM	113		ZALPO INT I-HWY 6.8 RADAR 1800	
958'	5.5 NM		1800	GS 3.00° TCH 53
CATEGORY	A	B	C	D
S-ILS 22L	CAT II RA 113/12 100 DA 112			
S-ILS 22L	CAT III RVR 06			

ELEV 13	TDZE 12
---------	---------



RLS Rwy's 13L and 13R  
HIRL all Rwy's  
TDZ/CL Rwy's 4L, 4R, 13L, 22L and 31R

NE-2, 14 MAY 2026 to 11 JUN 2026

NE-2, 14 MAY 2026 to 11 JUN 2026