

LOC/DME I-HWY	APP CRS	Rwy Ldg	8400
110.9	224°	TDZE	12
Chan 46		Apt Elev	13

ILS or LOC RWY 22L

JOHN F KENNEDY INTL (JFK)

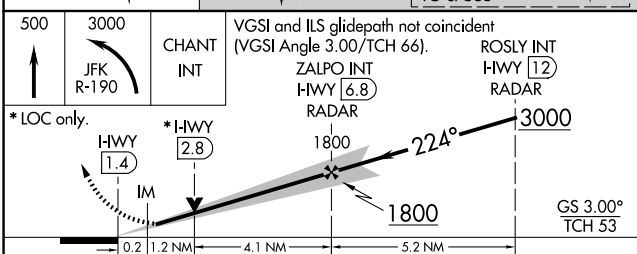
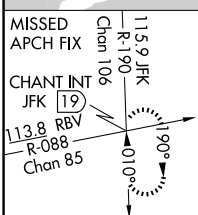
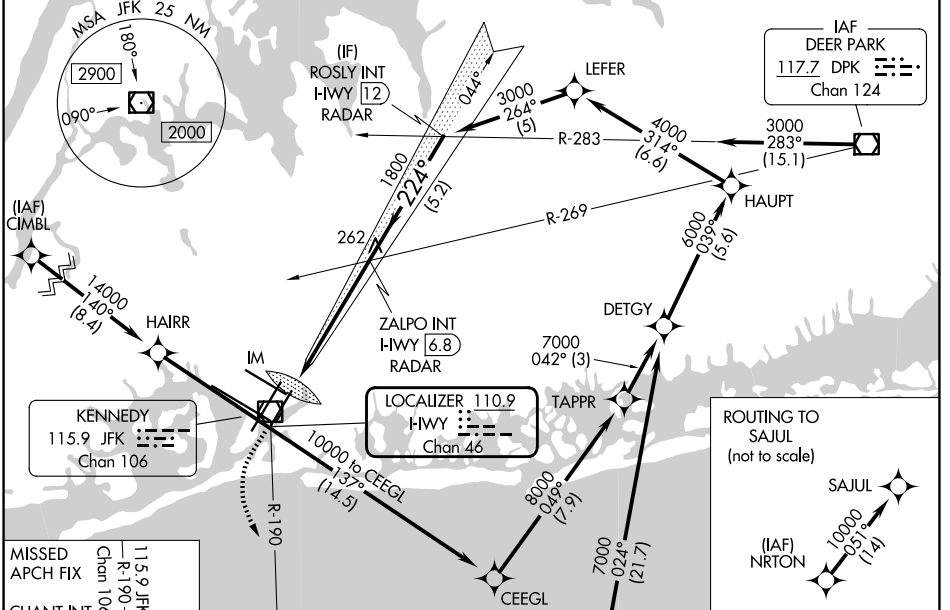
RNAV 1-GPS or RADAR required for procedure entry.
 From CIMBL, NRTON: RNAV 1-GPS required.

ALSF-2

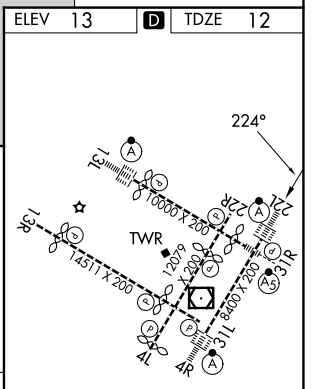
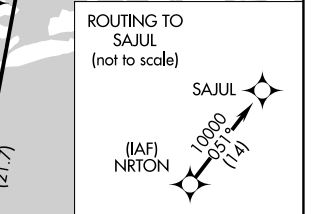
MISSED APPROACH: Climb to 500 then climbing left turn to 3000 on JFK VOR/DME R-190 to CHANT INT/19 DME and hold.

Simultaneous approach authorized.

D-ATIS (SW)	D-ATIS (NE)	NEW YORK APP CON	KENNEDY TOWER	GND CON
115.4	117.7	128.725	119.1 281.55 (4R/22L and 13L/31R) 123.9 281.55 (4L/22R and 13R/31L)	121.9 348.6



500	3000	CHANT INT	VGSi and ILS glidepath not coincident (VGSi Angle 3.00/TCH 66).	
	JFK R-190		ZALPO INT I-HWY 6.8 RADAR	ROSLY INT I-HWY 12 RADAR
*LOC only.	*I-HWY 1.4	*I-HWY 2.8	1800	3000
	IM		1800	GS 3.00° TCH 53
CATEGORY	A	B	C	D
S-ILS 22L	212/18		200 (200-1/2)	
S-LOC 22L	520/24 508 (600-1/2)		520/55 508 (600-1)	
CIRCLING	640-1 627 (700-1)		680-1 3/4 667 (700-1 3/4) 680-2 667 (700-2)	



RLS Rwy's	13L and 13R				
HRL all Rwy's	13L, 13R, 22L, 22R, 4L, 4R, 13L, 22L and 31R				
TDZ/CL Rwy's	4L, 4R, 13L, 22L and 31R				
	FAF to MAP 5.5 NM				
Knots	60	90	120	150	180
Min:Sec	5:30	3:40	2:45	2:12	1:50

NE-2, 14 MAY 2026 to 11 JUN 2026

NE-2, 14 MAY 2026 to 11 JUN 2026