

LOC/DME I-JOC 109.5 Chan 32	APP CRS 221°	Rwy Ldg 7795 TDZE 13 Apt Elev 13
---	------------------------	---

ILS or LOC RWY 22R

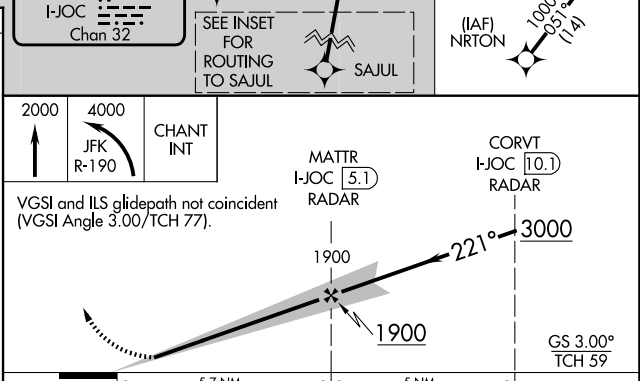
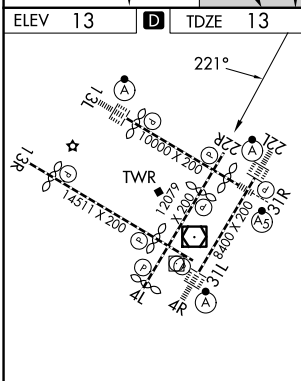
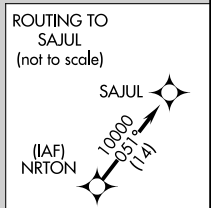
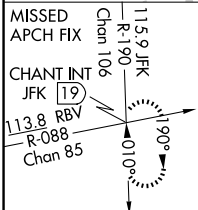
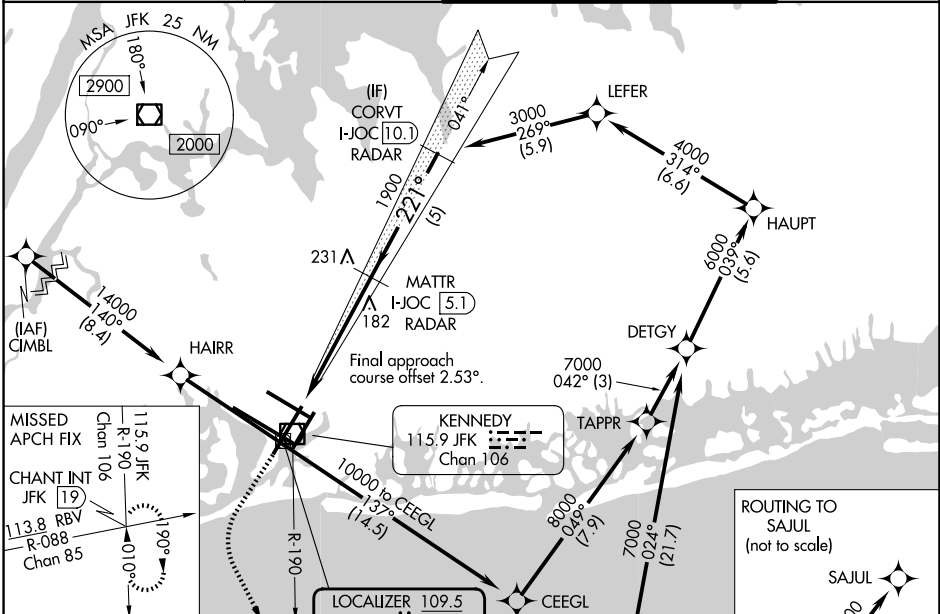
JOHN F KENNEDY INTL (JFK)

RNAV 1-GPS or RADAR required for procedure entry.
From CIMBL, NRTON: RNAV 1-GPS required. DME or RADAR required.

Simultaneous approach authorized.

MISSED APPROACH: Climb to 2000 then climbing left turn to 4000 on JFK VOR/DME R-190 to CHANT INT and hold.

(SW) 115.4	D-ATIS (NE) 117.7	128.725	NEW YORK APP CON 128.125	269.0	KENNEDY TOWER 119.1	281.55	(4R/22L and 13L/31R) 123.9	281.55	(4L/22R and 13R/31L)	GND CON 121.9	348.6
----------------------	--------------------------------	----------------	------------------------------------	--------------	-------------------------------	---------------	--------------------------------------	---------------	----------------------	-------------------------	--------------



RLS Rwws 13L and 13R
HIRL all Rwws
TDZ/CL Rwws 4L, 4R, 13L, 22L and 31R
FAF to MAP 5.7 NM

Knots	60	90	120	150	180
Min:Sec	5:42	3:48	2:51	2:17	1:54

CATEGORY	A	B	C	D
S-ILS 22R	263/40 250 (300-3/4)			
S-LOC 22R	460/55	447 (500-1)	460-1 3/8	447 (500-1 3/8)
CIRCLING	640-1 627 (700-1)		680-1 3/4	680-2
			667 (700-1 3/4)	667 (700-2)

NE-2, 14 MAY 2026 to 11 JUN 2026

NE-2, 14 MAY 2026 to 11 JUN 2026