

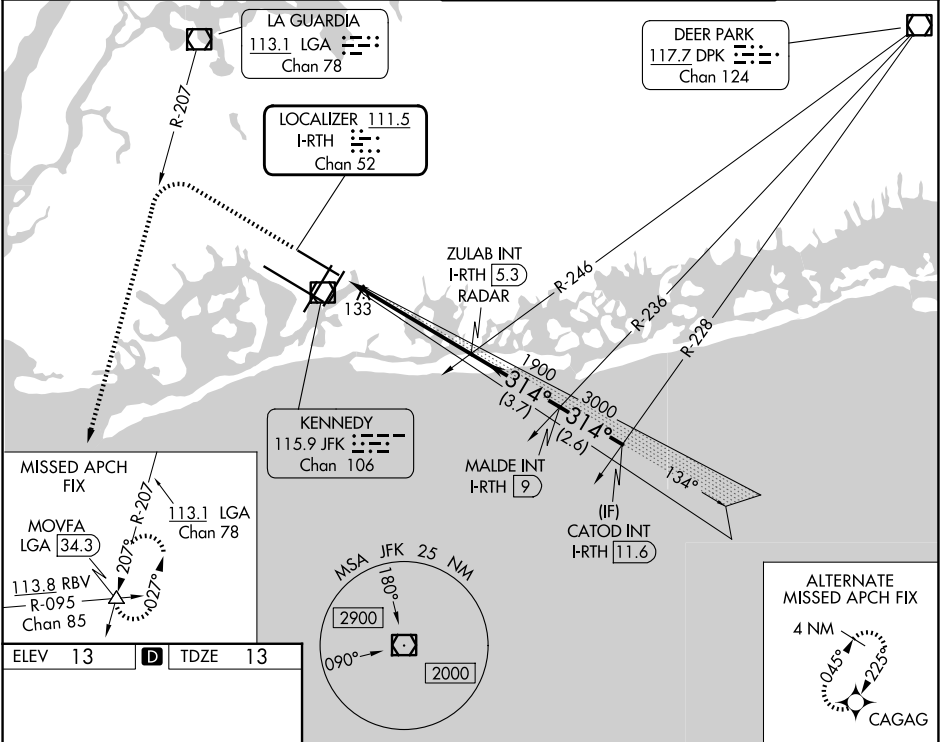
LOC/DME I-RTH <b>111.5</b> Chan 52	APP CRS <b>314°</b>	Rwy Ldg <b>8486</b> TDZE <b>13</b> Apt Elev <b>13</b>
--	------------------------	---

# ILS or LOC RWY 31R

JOHN F KENNEDY INTL (JFK)

RADAR required for procedure entry.		MALSR	MISSED APPROACH: Climb to 1800 then climbing left turn to 4000 on LGA VOR/DME R-207 to MOVFA INT/LGA 34.3 DME and hold.
Simultaneous approach authorized.			

(SW)	D-ATIS (NE)	NEW YORK APP CON	KENNEDY TOWER	GND CON
<b>115.4</b>	<b>117.7 128.725</b>	<b>128.125 269.0</b>	<b>119.1 281.55</b> (4R/22L and 13L/31R) <b>123.9 281.55</b> (4L/22R and 13R/31L)	<b>121.9 348.6</b>

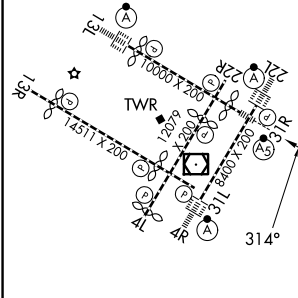


NE-2, 14 MAY 2026 to 11 JUN 2026

NE-2, 14 MAY 2026 to 11 JUN 2026

ELEV 13	<b>D</b>	TDZE 13
---------	----------	---------

1800	4000	LGA R-207	MOVFA $\triangle$	VGSI and ILS glidepath not coincident (VGSI Angle 3.00°/TCH 54).
* LOC only.		ZULAB INT I-RTH 5.3 RADAR	MALDE INT I-RTH 9	CATOD INT I-RTH 11.6



1.2	4.5 NM	3.7 NM	2.6 NM
* I-RTH 0.8		ZULAB INT I-RTH 5.3 RADAR	CATOD INT I-RTH 11.6
I-RTH 0.4		1900	3000
314°		3000	3000
GS 3.00°		TCH 42	

RLS Rwy 13L and 13R  
HIRL all Rwy  
TDZ/CL Rwy 4L, 4R, 13L, 22L and 31R  
FAF to MAP 5.7 NM

Knots	60	90	120	150	180
Min:Sec	5:42	3:48	2:51	2:17	1:54

CATEGORY	A	B	C	D
S-ILS 31R	212/18 200 (200-½)			
S-LOC 31R	440/24	428 (500-½)	440/40	428 (500-¾)
CIRCLING	640-1	627 (700-1)	680-1¾ 667 (700-1¾)	680-2 667 (700-2)