

LOC/DME I-HIQ 110.9 Chan 46	APP CRS 044°	Rwy Ldg 11010 TDZE 13 Apt Elev 13
---	------------------------	--

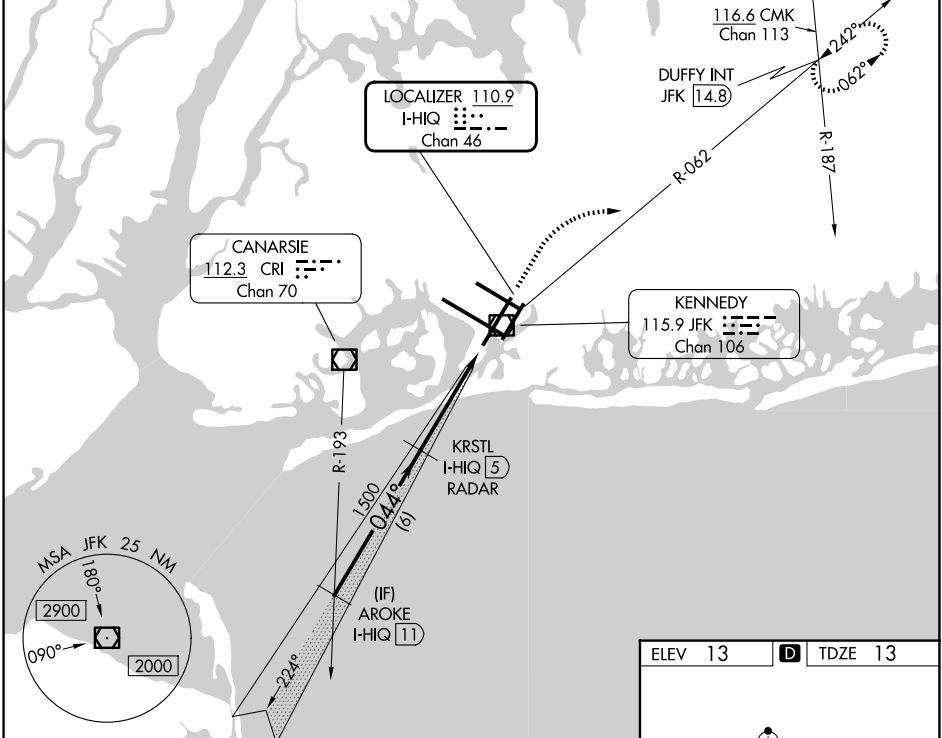
ILS or LOC RWY 4L

JOHN F KENNEDY INTL (JFK)

RADAR required for procedure entry. DME or RADAR required for LOC only.
 Simultaneous approach authorized.
 Autopilot coupled approach NA below 200 feet MSL.

MISSED APPROACH: Climb to 2000 then climbing right turn to 3000 on JFK VOR/DME R-062 to DUFFY INT/JFK 14.8 DME and hold.

D-ATIS (SW) 115.4	D-ATIS (NE) 117.7	128.725	NEW YORK APP CON 128.125	269.0	KENNEDY TOWER 119.1 281.55 123.9 281.55 (4R/22L and 13L/31R) (4L/22R and 13R/31L)	GND CON 121.9 348.6
-----------------------------	-----------------------------	----------------	------------------------------------	--------------	---	--------------------------------------



NE-2, 14 MAY 2026 to 11 JUN 2026

NE-2, 14 MAY 2026 to 11 JUN 2026

