

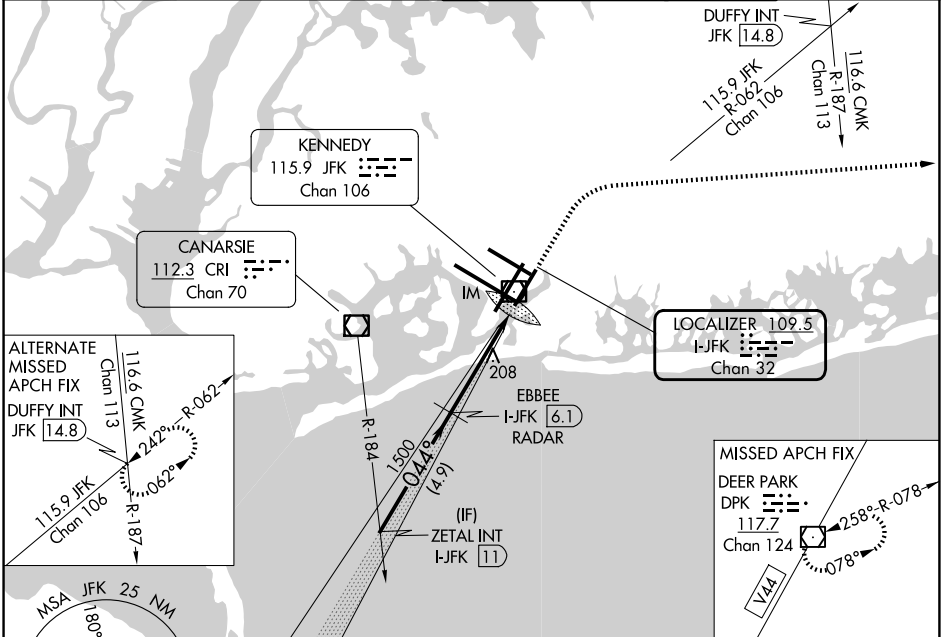
LOC/DME I-JFK <b>109.5</b> Chan 32	APP CRS <b>044°</b>	Rwy Ldg <b>8400</b>
	TDZE <b>12</b>	Apt Elev <b>13</b>

# ILS or LOC RWY 4R

JOHN F KENNEDY INTL (JFK)

RADAR required for procedure entry.		ALSF-2	MISSED APPROACH: Climb to 800 then climbing right turn to 4000 heading 099° and V44 to DPK VOR/DME and hold.
Simultaneous approach authorized.			

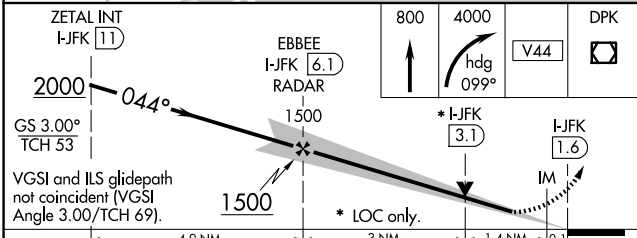
D-ATIS (SW) <b>115.4</b>	D-ATIS (NE) <b>117.7</b>	NEW YORK APP CON <b>128.125 269.0</b>	KENNEDY TOWER <b>119.1 281.55</b> (4R/22L and 13L/31R) <b>123.9 281.55</b> (4L/22R and 13R/31L)	GND CON <b>121.9 348.6</b>
-----------------------------	-----------------------------	--	---	-------------------------------



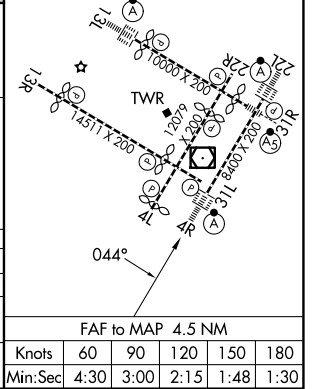
NE-2, 14 MAY 2026 to 11 JUN 2026

NE-2, 14 MAY 2026 to 11 JUN 2026

ELEV 13	TDZE 12
RLLS Rwy 13L and 13R HIRL all Rwy's TDZ/CL Rwy 4L, 4R, 13L, 22L and 31R	



CATEGORY	A	B	C	D
S-ILS 4R	212/18		200 (200-½)	
S-LOC 4R	540/24	528 (600-½)	540/55	528 (600-1)
CIRCLING	640-1 627 (700-1)		680-1¾ 667 (700-1¾)	680-2 667 (700-2)



FAF to MAP 4.5 NM					
Knots	60	90	120	150	180
Min:Sec	4:30	3:00	2:15	1:48	1:30