

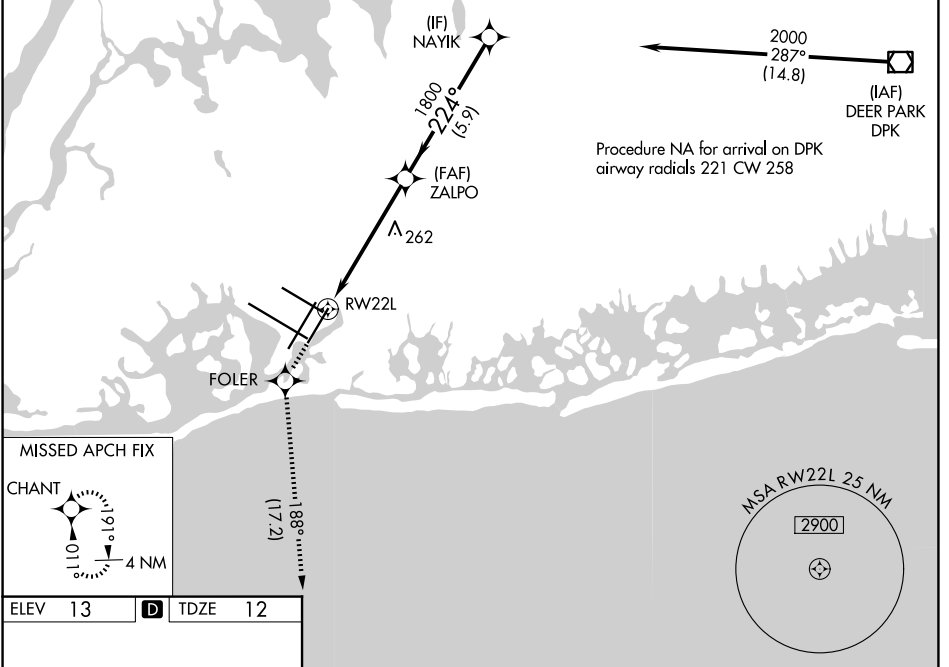
WAAS CH 97318 W22A	APP CRS 224°	Rwy Ldg TDZE 12 Apt Elev 13
--	------------------------	---

RNAV (GPS) Y RWY 22L

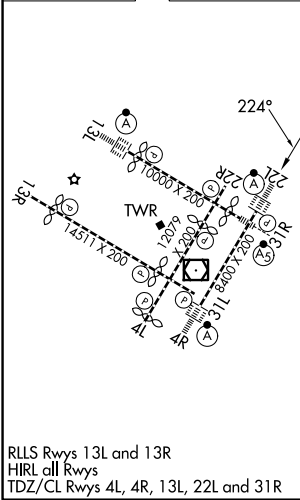
JOHN F KENNEDY INTL (JFK)

RNP APCH.	ALSf-2 	MISSED APPROACH: Climb to 3000 direct FOLER and on track 188° to CHANT and hold.
-----------	------------	--

(SW) 115.4	D-ATIS (NE) 117.7 128.725	NEW YORK APP CON 128.125 269.0	KENNEDY TOWER 119.1 281.55 (4R/22L and 13L/31R) 123.9 281.55 (4L/22R and 13R/31L)	GND CON 121.9 348.6
----------------------	--	--	---	-------------------------------



ELEV 13	D	TDZE 12
---------	----------	---------



3000	FOLER	tr 188°	CHANT	VGSI and RNAV glidepath not coincident (VGSI Angle 3.00/TCH 66).
*LNAV only.				NAYIK
*1.5 NM to RW22L				2000
RW22L				ZALPO 1800
				GP 3.00° TCH 53

CATEGORY	A	B	C	D
LPV DA	269/18		257 (300-½)	
LNAV/VNAV DA	419/50		407 (500-1)	
LNAV MDA	560/24	548 (600-½)	560/60	548 (600-1¼)
CIRCLING	640-1	627 (700-1)	680-1¾ 667 (700-1¾)	680-2 667 (700-2)

NE-2, 14 MAY 2026 to 11 JUN 2026

NE-2, 14 MAY 2026 to 11 JUN 2026