

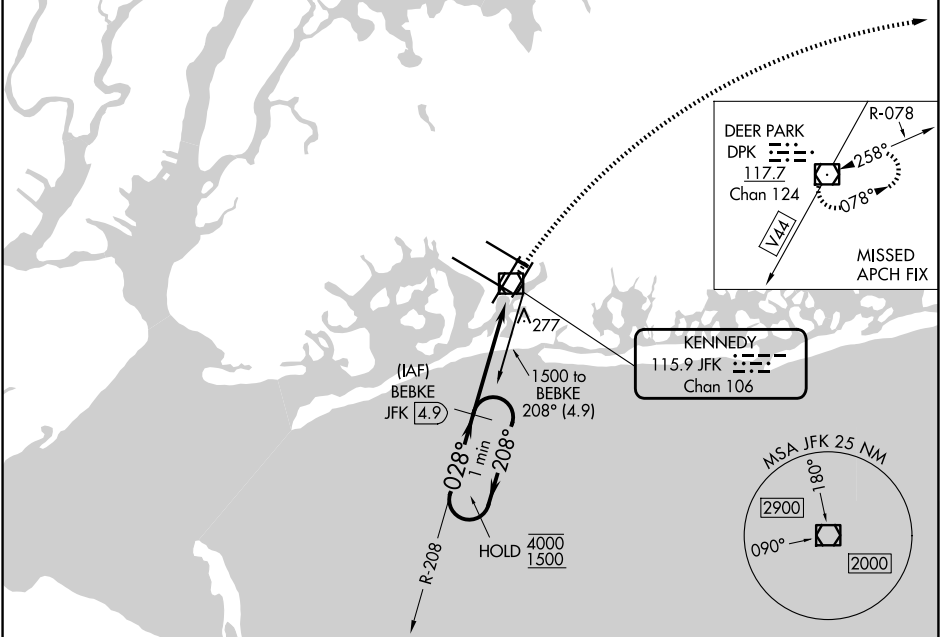
VOR/DME JFK <b>115.9</b> Chan <b>106</b>	APP CRS <b>028°</b>	Rwy Ldg <b>8400</b> TDZE <b>12</b> Apt Elev <b>13</b>
--	------------------------	---

# VOR RWY 4R

JOHN F KENNEDY INTL (JFK)

DME or RADAR required for procedure entry.		ALSF-2 	MISSED APPROACH: Climbing right turn to 4000 on heading 100° and V44 to DPK VOR/DME and hold.
--	--	------------	---

(SW) <b>115.4</b>	D-ATIS (NE) <b>117.7</b>	<b>128.725</b>	NEW YORK APP CON <b>128.125 269.0</b>	KENNEDY TOWER <b>119.1 281.55</b> (4R/22L and 13L/31R) <b>123.9 281.55</b> (4L/22R and 13R/31L)	GND CON <b>121.9 348.6</b>
----------------------	-----------------------------	----------------	--	---	-------------------------------



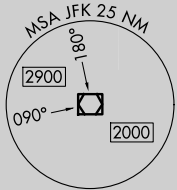
KENNEDY  
115.9 JFK  
Chan 106

DEER PARK  
DPK  
117.7  
Chan 124

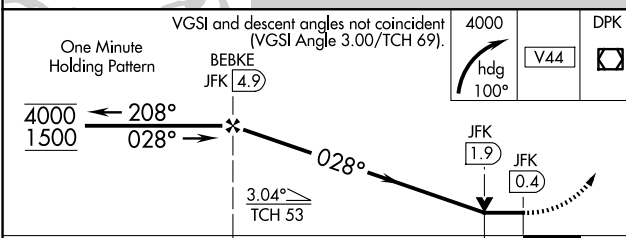
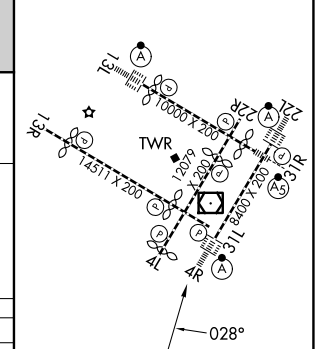
R-078  
258°  
078°

V44

MISSED APCH FIX



ELEV 13	<b>D</b>	TDZE 12
RLLS Rwy's 13L and 13R HIRL all Rwy's TDZ/CL Rwy's 4L, 4R, 13L, 22L and 31R		



CATEGORY	A	B	C	D
S-4R	540/24	528 (600-1/2)	540/50 528 (600-1)	540/60 528 (600-1 1/4)
CIRCLING	640-1	627 (700-1)	680-1 3/4 667 (700-1 3/4)	680-2 667 (700-2)

FAF to MAP 4.4 NM					
Knots	60	90	120	150	180
Min:Sec	4:24	2:56	2:12	1:46	1:28

NE-2, 14 MAY 2026 to 11 JUN 2026

NE-2, 14 MAY 2026 to 11 JUN 2026