

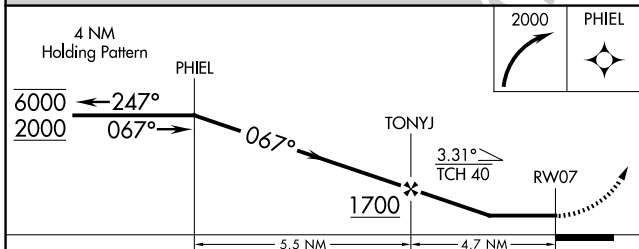
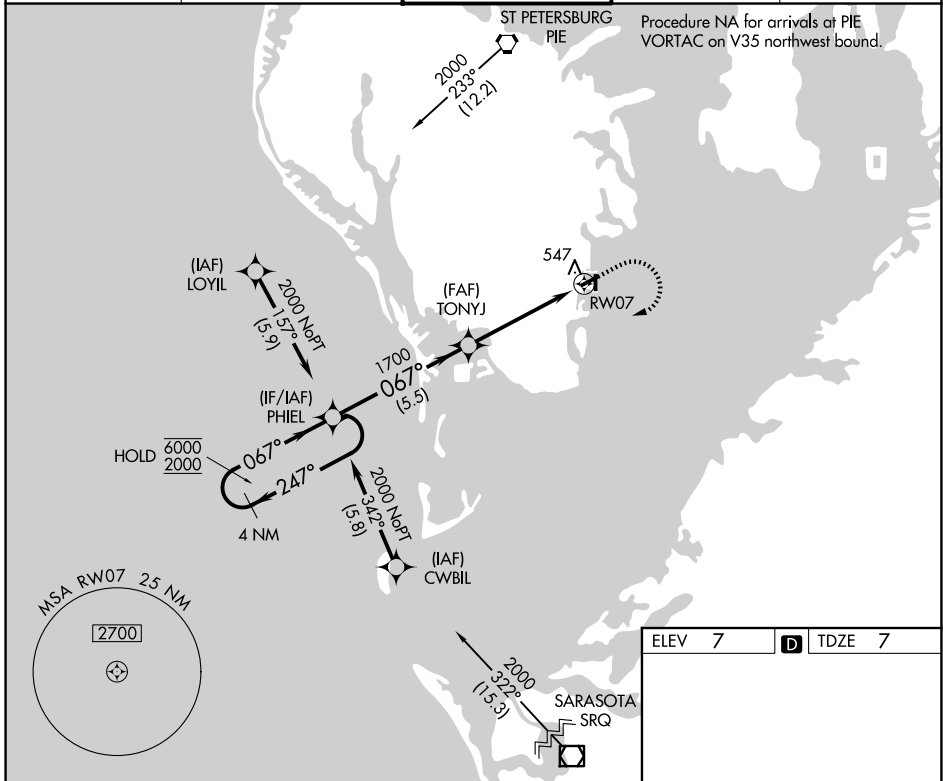
APP CRS	Rwy Ldg 2849
067°	TDZE 7
	Apt Elev 7

RNAV (GPS) RWY 7

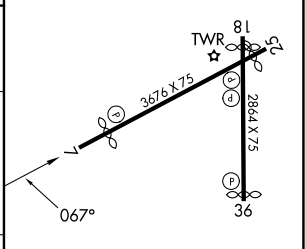
ALBERT WHITTED (SPG)

RNP APCH - GPS.	MISSED APPROACH: Climbing right turn to 2000 direct PHIEL and hold.
<p>⚠ Circling NA northwest of Rws 7 and 18. Procedure NA at night.</p> <p>⚠ Rwy 7 helicopter visibility reduction below 1 SM NA.</p>	

ASOS 118.875	TAMPA APP CON 119.65 316.05 (E) 125.3 316.05 (W)	WHITTED TOWER ★ 127.4 (CTAF) 0 257.6	GND CON 121.8	UNICOM 122.95
------------------------	----------------------------------------------------------------------	------------------------------------------------	-------------------------	-------------------------



ELEV 7	TDZE 7
--------	--------



CATEGORY	A	B	C	D
LNAV MDA	800-1 793 (800-1)	800-1¼ 793 (800-1¼)	800-2½ 793 (800-2½)	NA
CIRCLING	800-1 793 (800-1)	800-1¼ 793 (800-1¼)	800-2½ 793 (800-2½)	NA

MIRL Rws 7-25 and 18-36
REIL Rws 7, 18, 25 and 36

SE-3, 14 MAY 2026 to 11 JUN 2026

SE-3, 14 MAY 2026 to 11 JUN 2026