

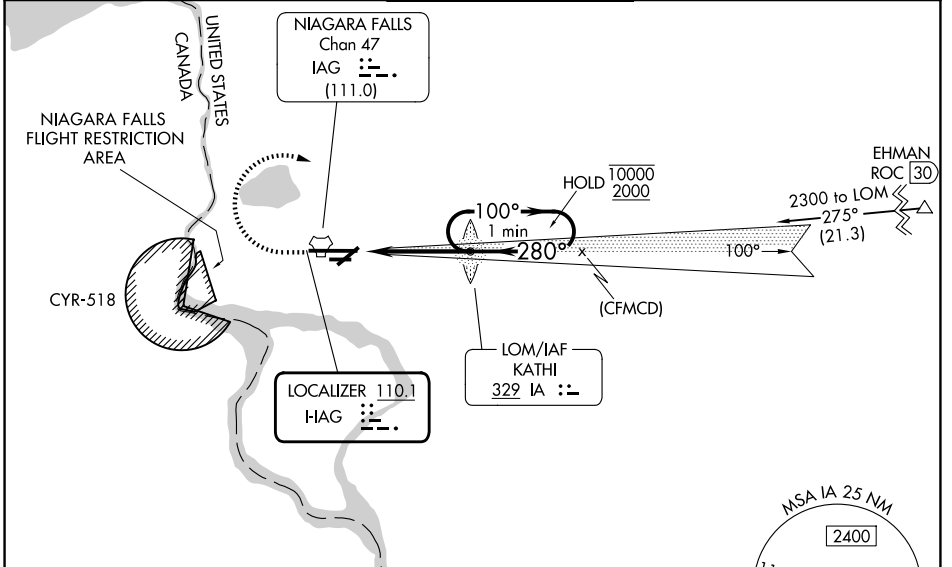
LOC I- IAG	APP CRS	Rwy Ldg	9129
110.1	280°	TDZE	588
		Apt Elev	592

ILS Y or LOC Y RWY 28

NIAGARA FALLS INTL (IAG)

ADF required.	MALSR	MISSED APPROACH: Climb to 1500 then climbing right turn to 3200 direct KATHI LOM and hold, continue climb-in-hold to 3200.
<p>▼ Rwy 28 helicopter visibility reduction below RVR 4000 NA.</p> <p>▲ Circling Rwy 6 NA at night.</p> <p>▲ Circling NA for Cat E southeast of Rwy 6-24.</p> <p>▲ Inop table does not apply to S-ILS 28 all Cats.</p> <p>▲ For inop ALS, increase S-LOC 28 visibility Cats A/B to RVR 5500, Cats C/D/E to 1½ SM.</p>		

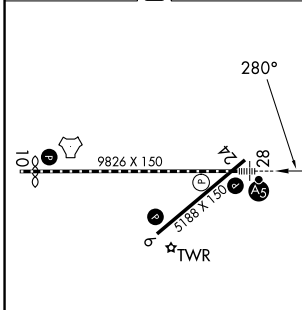
ATIS 120.8 269.4	BUFFALO APP CON 126.5 317.6	NIAGARA TOWER ★ 118.5 (CTAF) 0 349.0	GND CON 125.3 275.8	UNICOM 122.95
----------------------------	---------------------------------------	--	-------------------------------	-------------------------



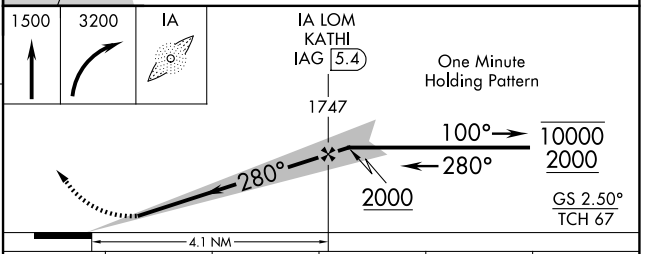
NE-2, 14 MAY 2026 to 11 JUN 2026

NE-2, 14 MAY 2026 to 11 JUN 2026

ELEV 592	D	TDZE 588
----------	----------	----------



REIL Rws 6 and 24	TDZL/RCLS Rwy 28
RCLS Rwy 10	HIRL Rwy 10-28
MIRL Rwy 6-24	FAF to MAP 4.1 NM
Knots	60 90 120 150 180
Min:Sec	4:06 2:44 2:03 1:38 1:22



CATEGORY	A	B	C	D	E
S-ILS 28	838/40		250 (300-¾)		
S-LOC 28	1080/40	492 (500-¾)	1080/50	492 (500-1)	
CIRCLING	1100-1	508 (600-1)	1280-2 688 (700-2)	1280-2½ 688 (700-2½)	1280-2½ 688 (700-2½)

ILS Y or LOC Y RWY 28