

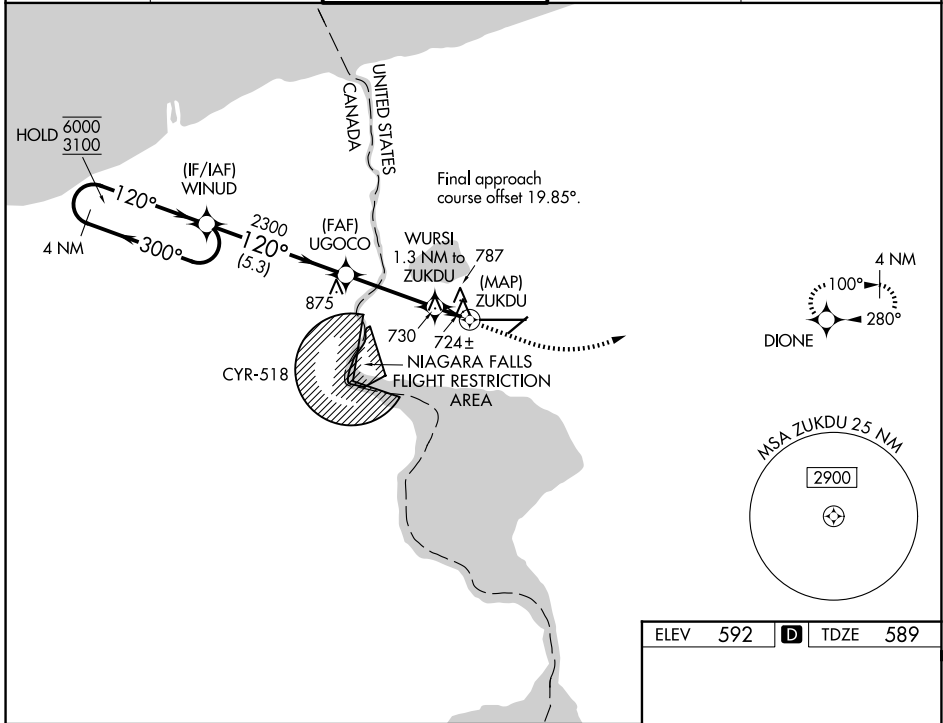
WAAS CH 82147 W10A	APP CRS 120°	Rwy Ldg TDZE Apt Elev	9126 589 592
--	------------------------	-----------------------------	---

RNAV (GPS) RWY 10

NIAGARA FALLS INTL (IAG)

RNP APCH - GPS.		MISSED APPROACH: Climb to 1100, then climbing left turn to 3600 direct DIONE and hold, continue climb-in-hold to 3600.		
▼ Rwy 10 helicopter visibility reduction below 3/4 SM NA. Circling NA for ▲ Cat E southeast of Rwy 6-24. Circling Rwy 6 NA at night.				

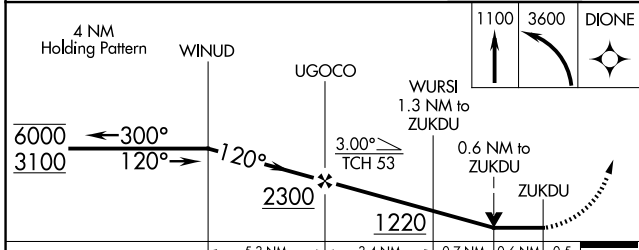
ATIS 120.8 269.4	BUFFALO APP CON 126.5 317.6	NIAGARA TOWER* 118.5 (CTAF) 0 349.0	GND CON 125.3 275.8	UNICOM 122.95
----------------------------	---------------------------------------	---	-------------------------------	-------------------------



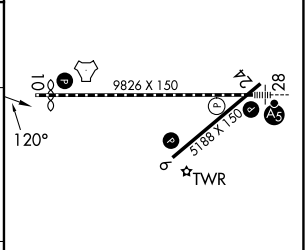
NE-2, 14 MAY 2026 to 11 JUN 2026

NE-2, 14 MAY 2026 to 11 JUN 2026

ELEV 592	D	TDZE 589
----------	----------	----------



CATEGORY	A	B	C	D	E
LP MDA	980-1	391 (400-1)	980-1 1/8	391 (400-1 1/8)	
LNAV MDA	1040-1	451 (500-1)	1040-1 3/8	451 (500-1 3/8)	
CIRCLING	1100-1	508 (600-1)	1280-2 688 (700-2)	1280-2 1/4 688 (700-2 1/4)	1280-2 1/2 688 (700-2 1/2)



- REIL Rwys 6 and 24
- TDZL/RCLS Rwy 28
- RCLS Rwy 10
- HIRL Rwy 10-28
- MIRL Rwys 6-24