


WAAS CH <b>63147</b> <b>W28A</b>	APP CRS <b>280°</b>	Rwy Ldg TDZE Apt Elev	<b>9129</b> <b>588</b> <b>592</b>
--	------------------------	-----------------------------	---

# RNAV (GPS) RWY 28

NIAGARA FALLS INTL (IAG)

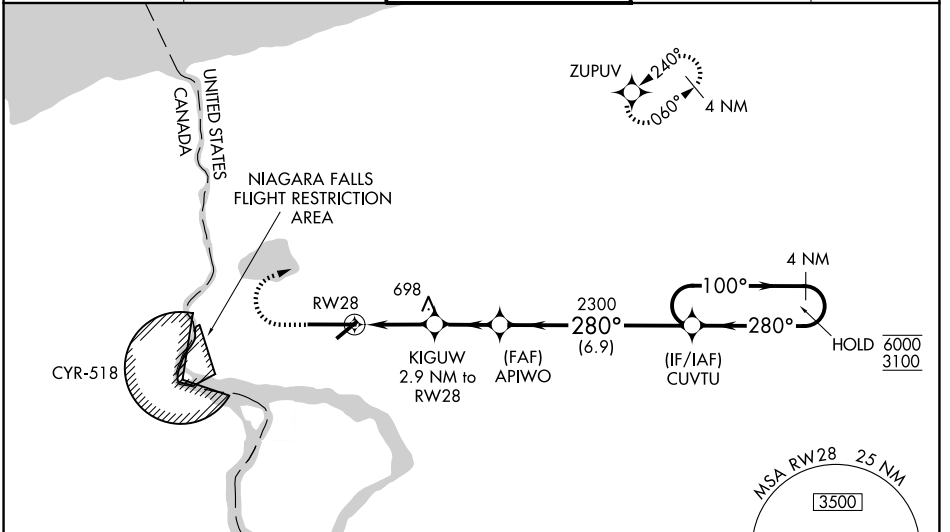
RNP APCH - GPS.

**⚠** For uncompensated Baro-VNAV systems, LNAV/VNAV NA below -18°C or above 54°C.  
**⚠** Rwy 28 helicopter visibility reduction below RVR 4000 not authorized.  
 Circling Rwy 6 NA at night.  
 Circling NA for Cat E southeast of Rwy 6-24.  
 Inop table does not apply to LPV all Cats.  
 For inop ALS, increase LNAV/VNAV visibility all Cats to RVR 4500, LNAV visibility all Cats to RVR 5500.

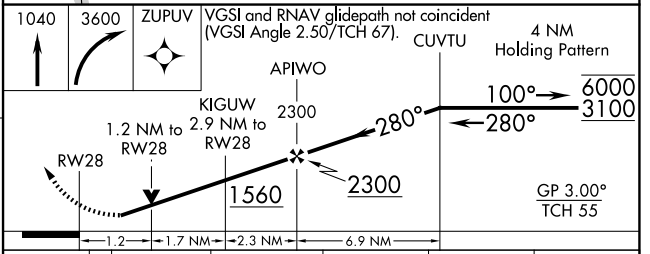
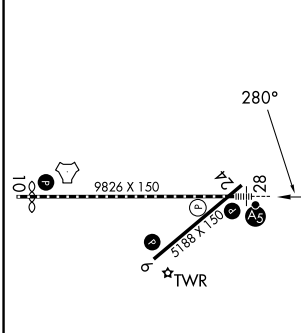
MALSRL  


MISSED APPROACH:  
 Climb to 1040 then climbing right turn to 3600 direct ZUPOV and hold, continue climb-in-hold to 3600.

ATIS <b>120.8 269.4</b>	BUFFALO APP CON <b>126.5 317.6</b>	NIAGARA TOWER ★ <b>118.5 (CTAF) 0 349.0</b>	GND CON <b>125.3 275.8</b>	UNICOM <b>122.95</b>
----------------------------	---------------------------------------	--	-------------------------------	-------------------------



ELEV 592	<b>D</b>	TDZE 588
----------	----------	----------



CATEGORY	A	B	C	D	E
LPV DA		838/40	250 (300-¾)		
LNAV/VNAV DA		957/40	369 (400-¾)		
LNAV MDA		960/40	372 (400-¾)		
CIRCLING	1100-1	508 (600-1)	1280-2 688 (700-2)	1280-2¼ 688 (700-2¼)	1280-2½ 688 (700-2½)

NE-2, 14 MAY 2026 to 11 JUN 2026

NE-2, 14 MAY 2026 to 11 JUN 2026