

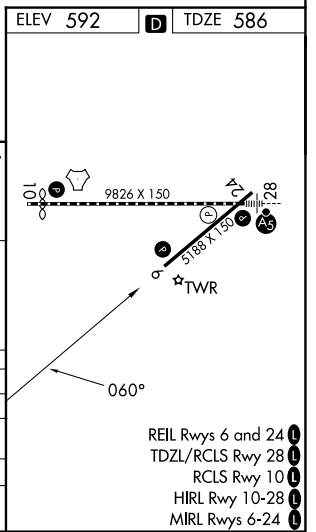
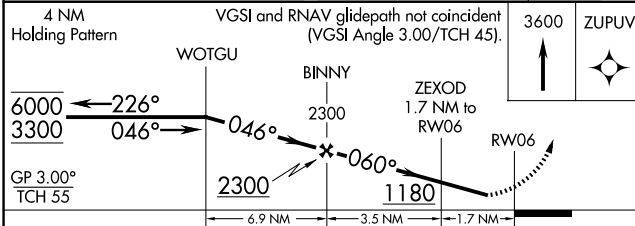
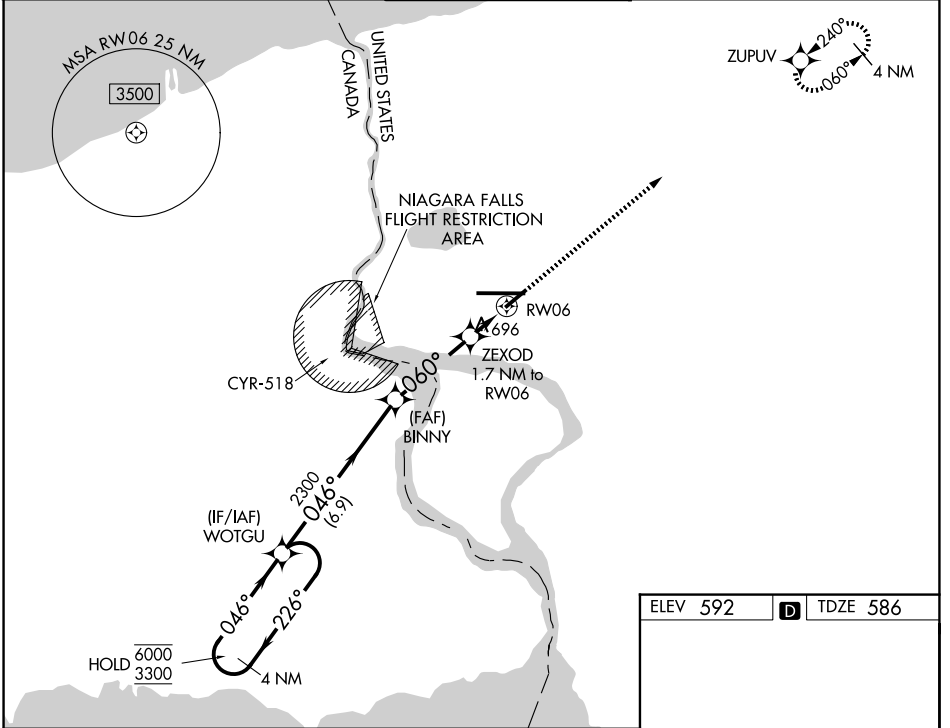
WAAS CH 90132 W06A	APP CRS 060°	Rwy Ldg TDZE Apt Elev	5188 586 592
--	------------------------	-----------------------------	---

RNAV (GPS) RWY 6

NIAGARA FALLS INTL (IAG)

RNP APCH - GPS.		<p>▼ For uncompensated Baro-VNAV systems, LNAV/VNAV NA below -17°C or above 54°C. ▲ Rwy 6 helicopter visibility reduction below 1 SM NA. Rwy 6 Straight-in and Circling minimums NA at night.</p>		<p>MISSED APPROACH: Climb to 3600 direct ZUPUV and hold, continue climb-in-hold to 3600.</p>	
-----------------	--	---	--	--	--

ATIS 120.8 269.4	BUFFALO APP CON 126.5 317.6	NIAGARA TOWER ★ 118.5 (CTAF) 0 349.0	GND CON 125.3 275.8	UNICOM 122.95
----------------------------	---------------------------------------	--	-------------------------------	-------------------------



CATEGORY	A	B	C	D
LPV DA		864-1	278 (300-1)	
LNAV/VNAV DA		849-1	263 (300-1)	
LNAV MDA	1000-1	414 (500-1)	1000-1½	414 (500-1½)
CIRCLING	1100-1	508 (600-1)	1280-2 688 (700-2)	1280-2¼ 688 (700-2¼)

NE-2, 14 MAY 2026 to 11 JUN 2026

NE-2, 14 MAY 2026 to 11 JUN 2026

- REIL Rwy 6 and 24
- TDZL/RCLS Rwy 28
- RCLS Rwy 10
- HIRL Rwy 10-28
- MIRL Rwy 6-24