

WAAS CH <b>45532</b> <b>W24A</b>	APP CRS <b>240°</b>	Rwy Ldg TDZE Apt Elev	<b>5108</b> <b>592</b> <b>592</b>
--	------------------------	-----------------------------	---

# RNAV (GPS) Z RWY 24

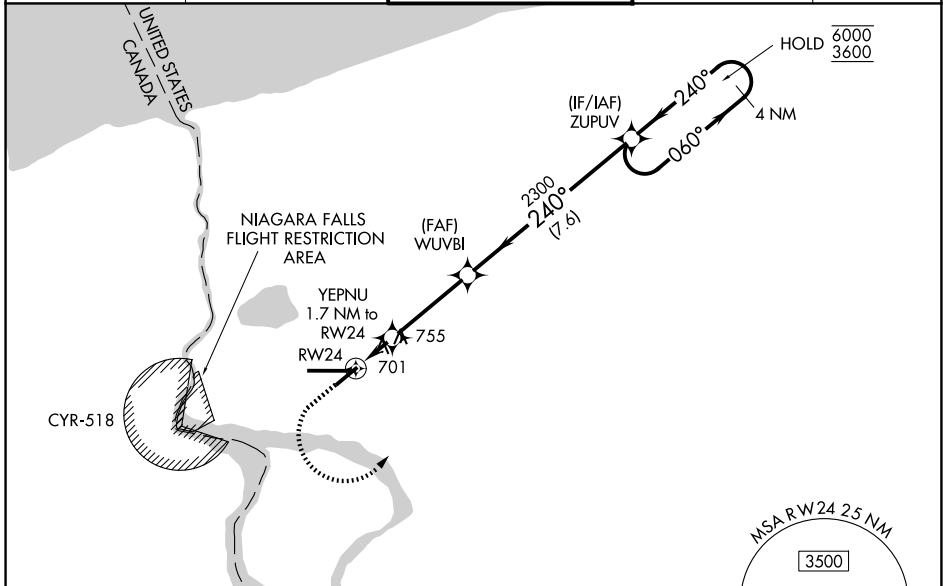
NIAGARA FALLS INTL (IAG)

RNP APCH - GPS.

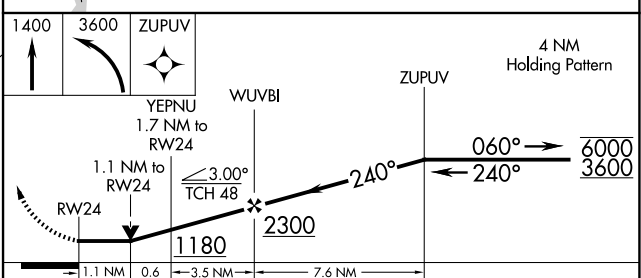
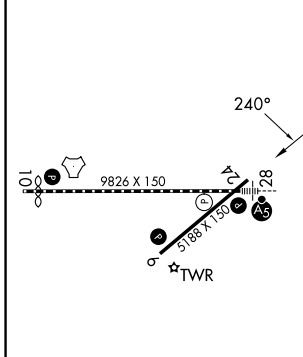
**⚠** Rwy 24 helicopter visibility reduction below  $\frac{3}{4}$  SM NA.  
Circling Rwy 6 NA at night.

**MISSED APPROACH:** Climb to 1400, then climbing left turn to 3600 direct ZUPOV and hold.  
\*Missed approach requires minimum climb of 265 feet per NM to 2120; if unable to meet climb gradient, see RNAV (GPS) Y Rwy 24.

ATIS <b>120.8 269.4</b>	BUFFALO APP CON <b>126.5 317.6</b>	NIAGARA TOWER★ <b>118.5 (CTAF) 0 349.0</b>	GND CON <b>125.3 275.8</b>	UNICOM <b>122.95</b>
----------------------------	---------------------------------------	---	-------------------------------	-------------------------



ELEV 592	<b>D</b>	TDZE 592
----------	----------	----------



CATEGORY	A	B	C	D
LP MDA*	1000-1	408 (500-1)	1000-1½	408 (500-1½)
LNAV MDA*	1020-1	428 (500-1)	1020-1¼	428 (500-1¼)
CIRCLING	1100-1	508 (600-1)	1280-2 688 (700-2)	1280-2¼ 688 (700-2¼)

NE-2, 14 MAY 2026 to 11 JUN 2026

NE-2, 14 MAY 2026 to 11 JUN 2026