

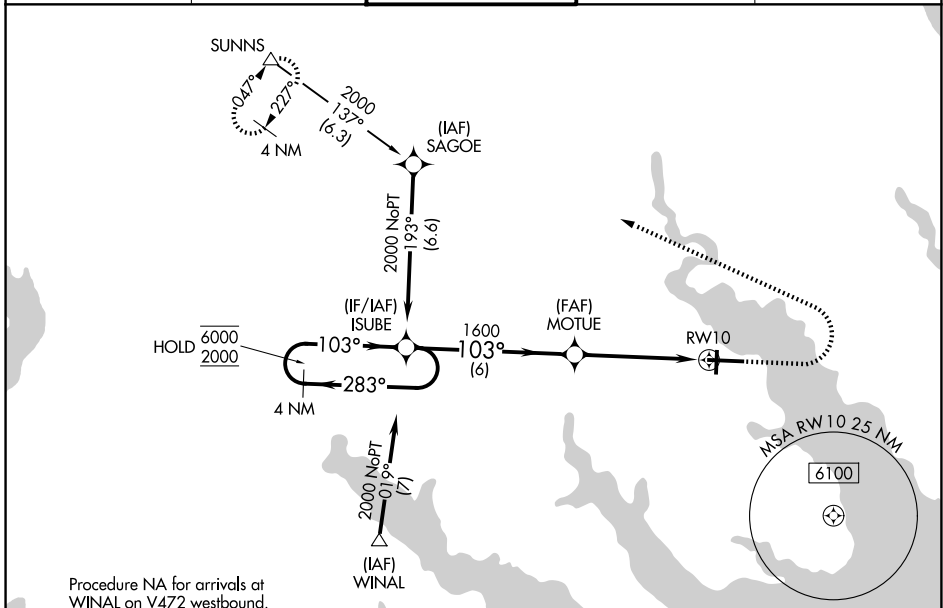
WAAS CH 65703 W10A	APP CRS 103°	Rwy Ldg 7219 TDZE 11 Apt Elev 11
--	------------------------	---

RNAV (GPS) RWY 10

ELIZABETH CITY CG AIR STATION/RGNL (E/C/G)

RNP APCH - GPS.	SALS 	MISSED APPROACH: Climb to 500 then climbing left turn 2000 direct SUNNS and hold.
	Circling Rwy 1 NA at night. Inop table does not apply to LPV. Procedure NA when tethered balloon located approximately 2 miles southeast of airport is flying.	

ASOS 124.375	NORFOLK APP CON 119.55 269.425	ELIZABETH CITY TOWER★ 120.5 (CTAF) 355.6	GND CON 121.9	UNICOM 122.95
------------------------	--	--	-------------------------	-------------------------

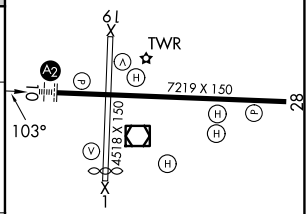
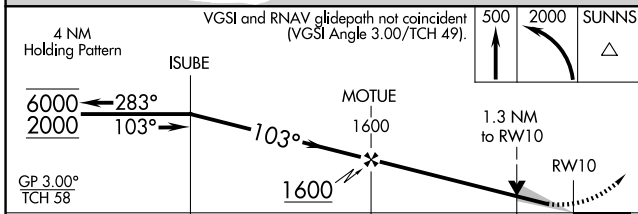


SE-2, 14 MAY 2026 to 11 JUN 2026

SE-2, 14 MAY 2026 to 11 JUN 2026

Procedure NA for arrivals at WINAL on V472 westbound.

ELEV 11	TDZE 11
---------	---------



CATEGORY	A	B	C	D
LPV DA	261-3/4		250 (300-3/4)	
LNNAV MDA	480-3/4	469 (500-3/4)	480-1 1/8	469 (500-1 1/8)
CIRCLING	480-1	469 (500-1)	640-1 3/4 629 (700-1 3/4)	640-2 629 (700-2)

MIRL Rwy 1-19
HIRL Rwy 10-28
REIL Rwys 10 and 28