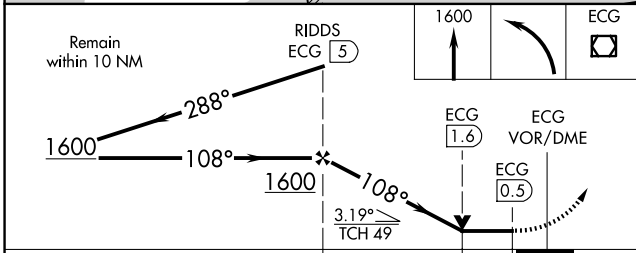
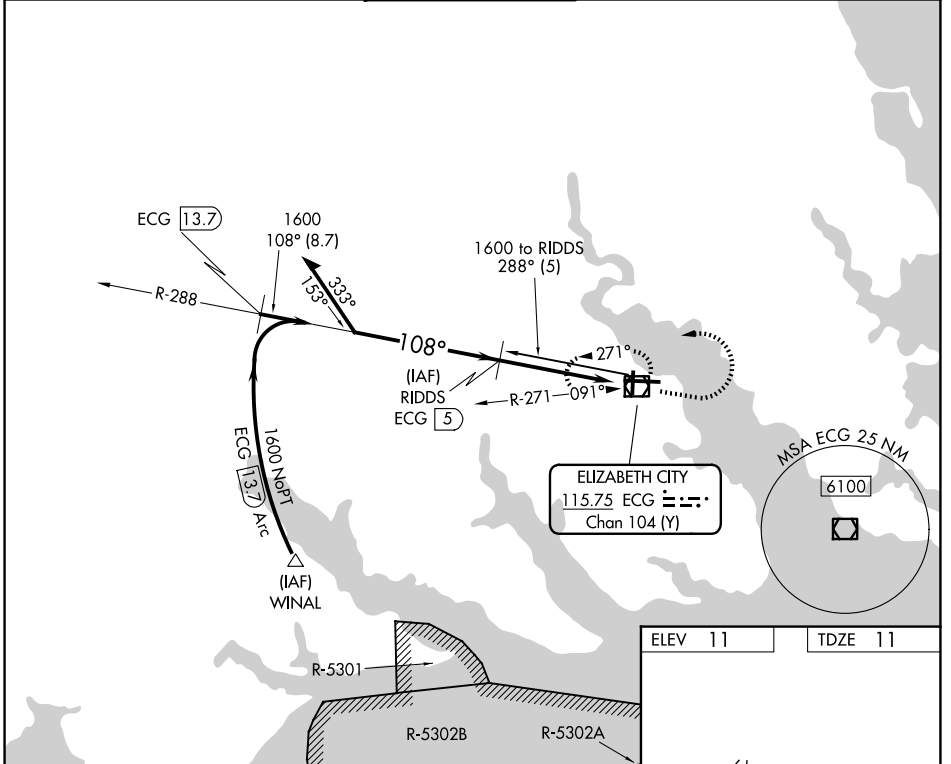


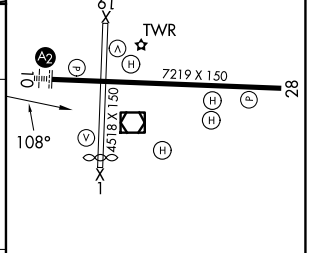
VOR/DME ECG 115.75 Chan 104 (Y)	APP CRS 108°	Rwy Ldg 7219 TDZE 11 Apt Elev 11
---	------------------------	---

VOR/DME RWY 10
ELIZABETH CITY CG AIR STATION/RGNL (ECG)

Procedure NA when tethered balloon located approximately 2 miles southeast of airport is flying. When local altimeter setting not received, use Currituck altimeter setting and increase all MDAs 40 feet and increase S-10 visibility Cats C/D 1/8 SM.	SALS 	MISSED APPROACH: Climb to 1600 then left turn direct ECG VOR/DME and hold.		
	ASOS 124.375	NORFOLK APP CON 119.55 269,425	ELIZABETH CITY TOWER ★ 120.5 (CTAF) 355.6	GND CON 121.9



ELEV 11	TDZE 11
---------	---------



CATEGORY	A	B	C	D
S-10	540-1 529 (600-1)		540-1 1/4 529 (600-1 1/4)	
CIRCLING	540-1 529 (600-1)		640-1 3/4 629 (700-1 3/4)	640-2 629 (700-2)

MIRL Rwy 1-19
HIRL Rwy 10-28
REL Rwy 10 and 28

SE-2, 14 MAY 2026 to 11 JUN 2026

SE-2, 14 MAY 2026 to 11 JUN 2026