

LOC I-FNT <b>109.9</b>	APP CRS <b>094°</b>	Rwy Ldg <b>7201</b> TDZE <b>771</b> Apt Elev <b>782</b>
---------------------------	------------------------	---

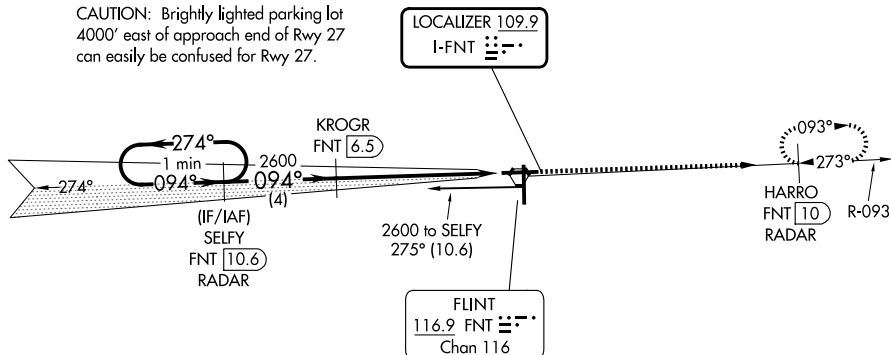
# ILS or LOC RWY 9

BISHOP INTL (FNT)

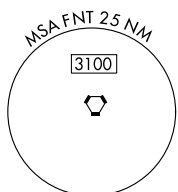
DME or RADAR required for procedure entry. DME or RADAR required.		MALSR 	MISSED APPROACH: Climb to 3000 on FNT VORTAC R-093 to HARRO/FNT VORTAC 10 DME/RADAR and hold.
	DME from FNT VORTAC. Simultaneous reception of I-FNT and FNT DME required. For inop ALS, increase S-LOC 9 Cat C/D visibility to 1 3/8 SM. ** RVR 1800 authorized with use of FD or AP or HUD to DA.		

ATIS <b>133.15</b>	GREAT LAKES APP CON * <b>118.8 257.9</b>	FLINT TOWER * <b>126.3 (CTAF) 257.9</b>	GND CON <b>121.9</b>	UNICOM <b>122.95</b>
-----------------------	---	--	-------------------------	-------------------------

CAUTION: Brightly lighted parking lot 4000' east of approach end of Rwy 27 can easily be confused for Rwy 27.

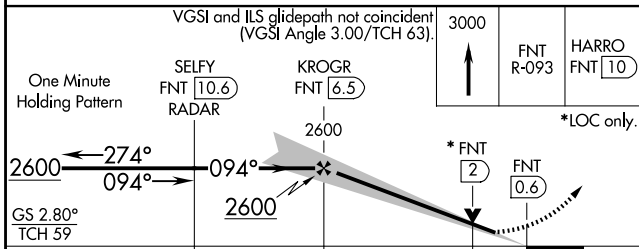


Procedure NA for arrival on FNT VORTAC airway radials 234 CW 286.



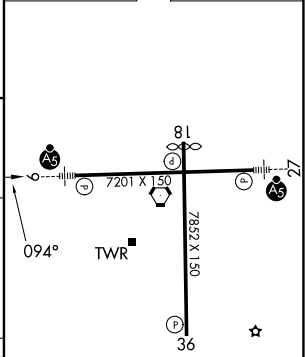
EC-1, 14 MAY 2026 to 11 JUN 2026

EC-1, 14 MAY 2026 to 11 JUN 2026



ELEV 782	<b>D</b> TDZE 771
----------	-------------------

CATEGORY	A	B	C	D
S-ILS 9 **	971/24 200 (200-1/2)			
S-LOC 9	1280/24	509 (500-1/2)	1280/55	509 (500-1)
CIRCLING	1280-1 498 (500-1)	1300-1 518 (600-1)	1300-1 1/2 518 (600-1 1/2)	1520-2 1/4 738 (800-2 1/4)



HRL Rwy 9-27 and 18-36				
REL Rwy 18 and 36				
FAF to MAP 6 NM				
Knots	60	90	120	150 180
Min:Sec	6:00	4:00	3:00	2:24 2:00