

VORTAC FNT <b>116.9</b> Chan <b>116</b>	APP CRS <b>359°</b>	Rwy Ldg <b>7652</b> TDZE <b>782</b> Apt Elev <b>782</b>
---	------------------------	---

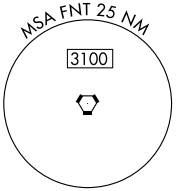
# VOR RWY 36

BISHOP INTL (FNT)

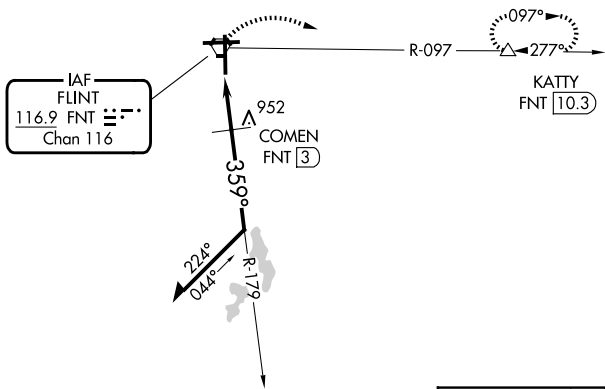
**▼** Rwy 36 helicopter visibility reduction below ¾ SM NA.  
**▲** DME required.

MISSED APPROACH: Climbing right turn to 3000 on FNT VORTAC R-097 to KATTY/10.3 DME and hold.

ATIS <b>133.15</b>	GREAT LAKES APP CON ★ <b>118.8 257.9</b>	FLINT TOWER ★ <b>126.3 (CTAF) 257.9</b>	GND CON <b>121.9</b>	UNICOM <b>122.95</b>
-----------------------	---	--	-------------------------	-------------------------

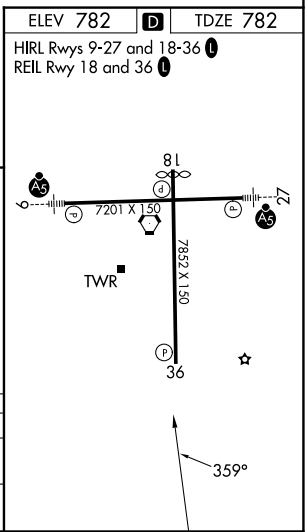
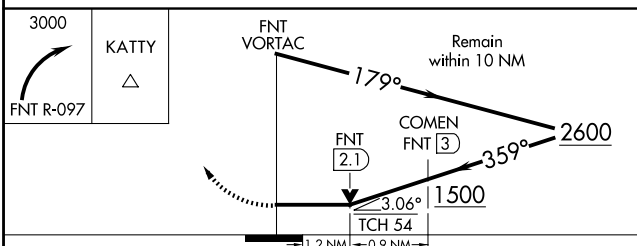


CAUTION: Brightly lighted parking lot 4000' east of approach end Rwy 27 can easily be confused for Rwy 27.



EC-1, 14 MAY 2026 to 11 JUN 2026

EC-1, 14 MAY 2026 to 11 JUN 2026



CATEGORY	A	B	C	D
S-36	1220-1	438 (500-1)	1220-1¼	438 (500-1¼)
CIRCLING	1240-1 458 (500-1)	1300-1 518 (600-1)	1300-1½ 518 (600-1½)	1520-2¼ 738 (800-2¼)