

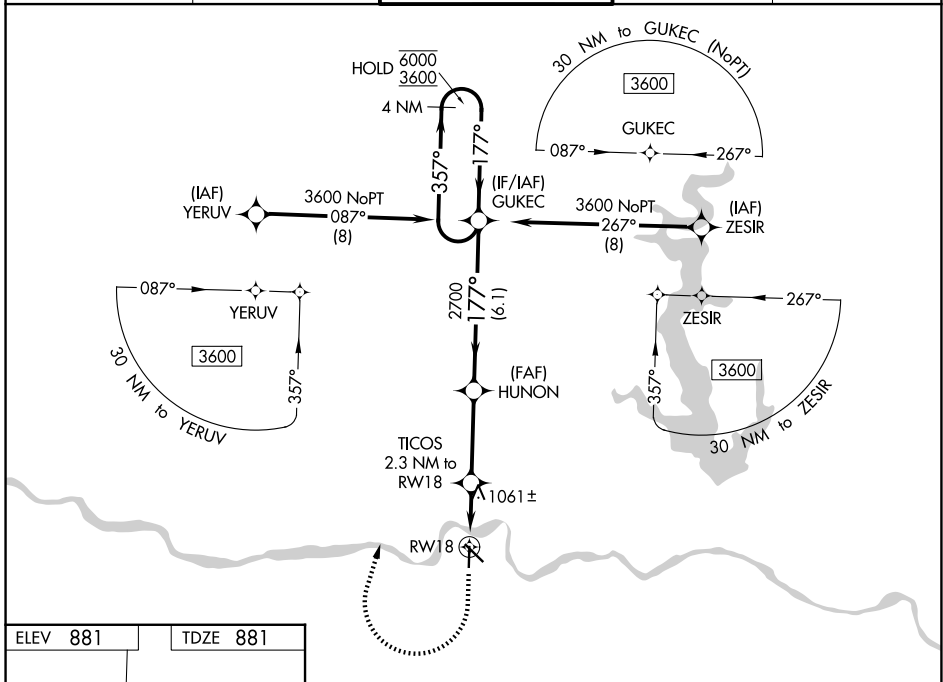
WAAS CH 53634 W18A	APP CRS 177°	Rwy Ldg TDZE Apt Elev	4331 881 881
--	------------------------	-----------------------------	---

RNAV (GPS) RWY 18

PHILIP BILLARD MUNI (TOP)

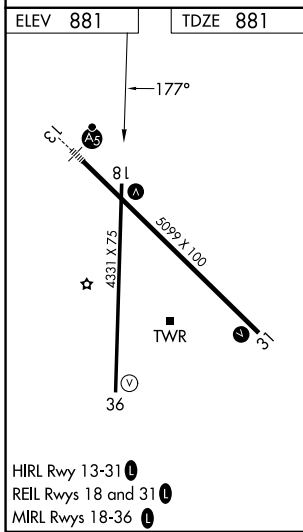
RNP APCH.
 ▼ Rwy 18 helicopter visibility reduction below 3/4 SM NA.
 For uncompensated Baro-VNAV systems, LNAV/VNAV NA below -19°C or above 54°C.
 MISSED APPROACH: Climb to 1500 then climbing right turn to 3600 direct GUKEC and hold.

ASOS 121.275	KANSAS CITY CENTER 123.8 343.7	TOPEKA TOWER * 118.7 (CTAF) 0 257.8	GND CON 121.9	UNICOM 122.95
------------------------	--	---	-------------------------	-------------------------



NC-2, 14 MAY 2026 to 11 JUN 2026

NC-2, 14 MAY 2026 to 11 JUN 2026



1500	3600	GUKEC	GUKEC	4 NM Holding Pattern
*LNAV only	TICOS 2.3 NM to RW18	HUNON 2700	GUKEC 2700	6000 / 3600
RW18	*1.3 NM to RW18	1640*	177°	357° / 177°
1.3 NM	1 NM	3.3 NM	6.1 NM	GP 3.00° TCH 35
CATEGORY	A	B	C	D
LPV DA	1174-1 293 (300-1)			NA
LNAV/VNAV DA	1340-1 459 (500-1 1/2)			NA
LNAV MDA	1320-1	439 (500-1)	1320-1 439 (500-1 1/2)	NA
CIRCLING	1360-1 479 (500-1)	1440-1 559 (600-1)	1600-2 719 (800-2)	NA