

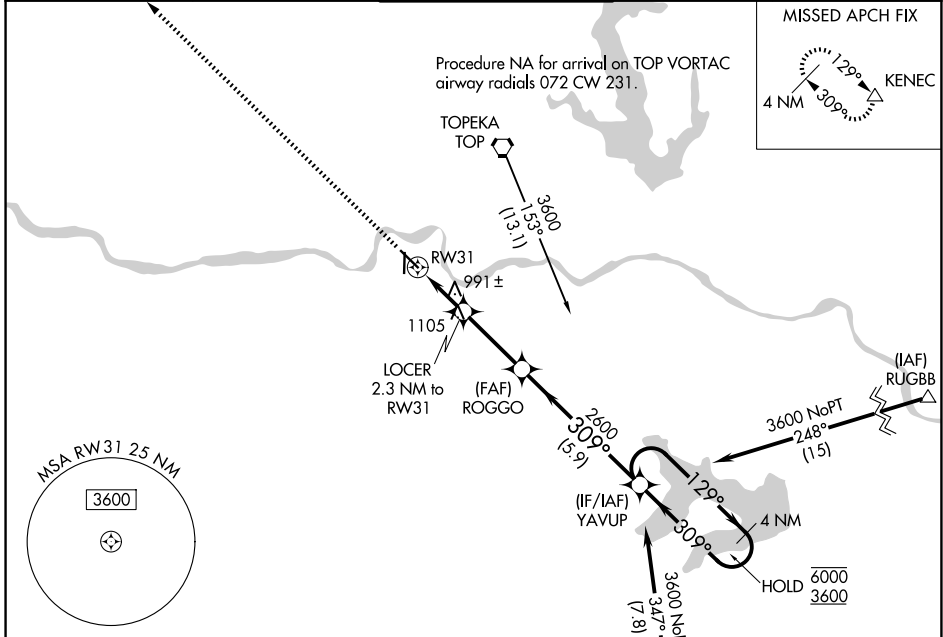
WAAS CH 69627 W31A	APP CRS 309°	Rwy Ldg TDZE 880 Apt Elev 881	5099
--	------------------------	---	-------------

RNAV (GPS) RWY 31

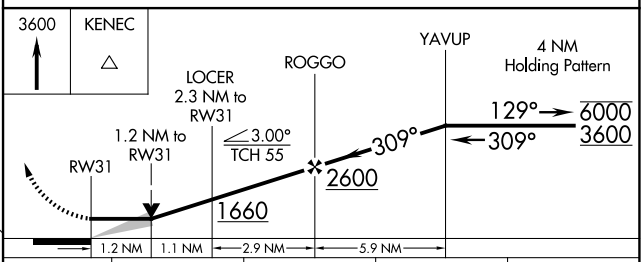
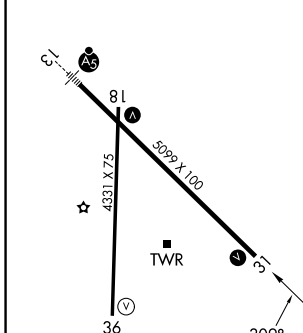
PHILIP BILLARD MUNI (TOP)

RNP APCH - GPS.		MISSED APPROACH: Climb to 3600 direct KENEC and hold.		
-----------------	--	---	--	--

ASOS 121.275	KANSAS CITY CENTER 123.8 343.7	TOPEKA TOWER ★ 118.7 (CTAF) 0 257.8	GND CON 121.9	UNICOM 122.95
------------------------	--	---	-------------------------	-------------------------



ELEV 881	TDZE 880
----------	----------



CATEGORY	A	B	C	D
LP MDA	1320-1	440 (500-1)	1320-1¼ 440 (500-1¼)	NA
LNAV MDA	1420-1	540 (600-1)	1420-1½ 540 (600-1½)	NA
CIRCLING	1420-1 539 (600-1)	1440-1 559 (600-1)	1600-2 719 (800-2)	NA

- HIRL Rwy 13-31
- REIL Rwy 18 and 31
- MIRL Rwy 18-36

NC-2, 14 MAY 2026 to 11 JUN 2026

NC-2, 14 MAY 2026 to 11 JUN 2026