

BRIDGEHAVEN ONE DEPARTURE

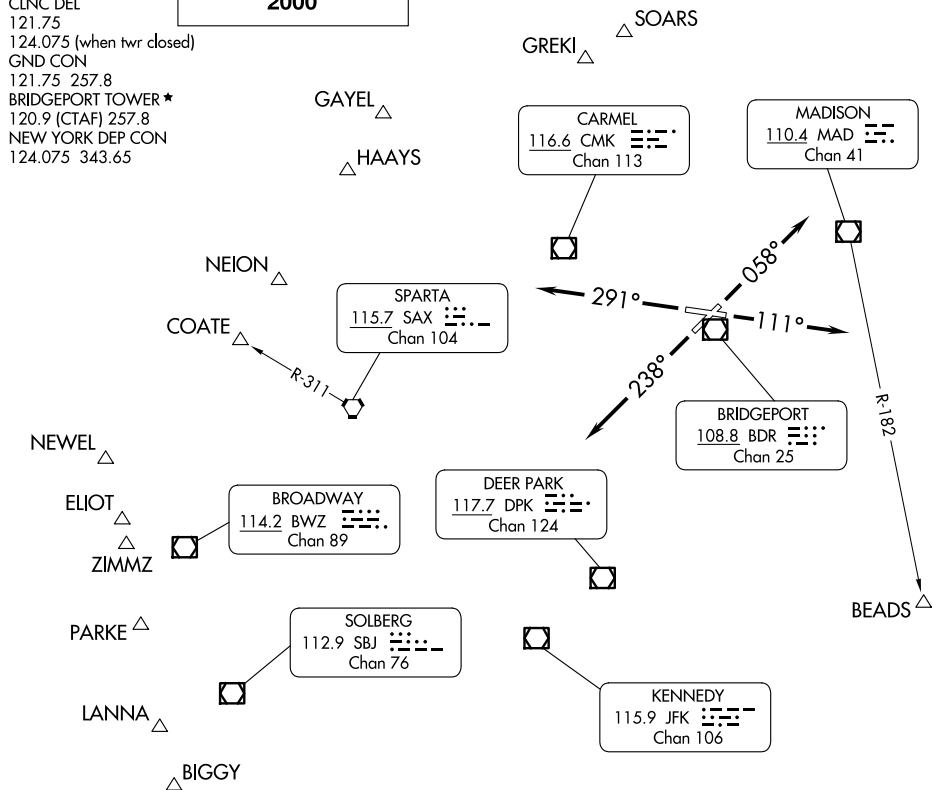
AL-621 (FAA)

BRIDGEPORT, CONNECTICUT

ATIS
119.15
CLNC DEL
121.75
124.075 (when twr closed)
GND CON
121.75 257.8
BRIDGEPORT TOWER ★
120.9 (CTAF) 257.8
NEW YORK DEP CON
124.075 343.65

**TOP ALTITUDE:
2000**

RADAR required.



TAKEOFF MINIMUMS:

Rwys 6, 11, 24: Standard.
Rwy 29: 600-2³/₄ or standard with minimum climb of 300' per NM to 700.

NOTE: BEADS Departures expect vectors to MAD R-182.

NOTE: Chart not to scale.

NOTE: COATE Departures expect vectors to SAX/SAX R-311.

NOTE: ELIOT authorized for all aircraft types but restricted to a final altitude of 14000 or 16000.

NOTE: NEWEL authorized only for jet aircraft requesting a final altitude of FL180 and above.

NOTE: ZIMMZ authorized for all aircraft types but restricted to a final altitude of FL180 and above.

DEPARTURE ROUTE DESCRIPTION

TAKEOFF RUNWAY 6: Climb heading 058°, thence. . .

TAKEOFF RUNWAY 11: Climb heading 111°, thence. . .

TAKEOFF RUNWAY 24: Climb heading 238°, thence. . .

TAKEOFF RUNWAY 29: Climb heading 291°, thence. . .

. . . expect vectors to assigned route/fix. Maintain 2000. Expect clearance to filed altitude/flight level within ten (10) minutes after departure.

NE-1, 14 MAY 2026 to 11 JUN 2026

NE-1, 14 MAY 2026 to 11 JUN 2026